



B.E. International Program

Semester 1/2015 (August 17 - December 4, 2015)

EE451 INTERNATIONAL TRADE THEORY AND POLICY

Instructor: Assoc. Prof. Dr. Chayun Tantivasadakarn

NO.	Student I.D.	M1 (20)	M2 (30)	M3 (30)	Midterm (80)	Adj Midterm (35)	%
1	5504640060	15	26.5	14	55.5	24.3	69.4
2	5504640367	13	25	23	61	26.7	76.3
3	5504640805	20	26.5	10	56.5	24.7	70.6
4	5504640979	10	19	7	36	15.8	45.0
5	5504640995	15	22.5	30	67.5	29.5	84.4
6	5504641035	15	20	16	51	22.3	63.8
7	5504641068	8	10	10	28	12.3	35.0
8	5504641134	12	23.5	28	63.5	27.8	79.4
9	5504641209	19	22.5	29	70.5	30.8	88.1
10	5504641340	16	28	28	72	31.5	90.0
11	5504641449	10	17.5	21	48.5	21.2	60.6
12	5504641613	absent			0	0.0	0.0
13	5504641753	11	21	17	49	21.4	61.3
14	5504642041	12	9	8	29	12.7	36.3
15	5604640135	14	14	29	57	24.9	71.3
16	5604640150	12	22.5	5	39.5	17.3	49.4
17	5604640176	18.5	22.5	26	67	29.3	83.8
18	5604640267	9	10	25	44	19.3	55.0
19	5604640465	12.5	18.5	8	39	17.1	48.8
20	5604640481	11	14.5	10	35.5	15.5	44.4
21	5604640515	16	17	17	50	21.9	62.5
22	5604640564	19	22.5	26	67.5	29.5	84.4
23	5604640622	17	17.5	22	56.5	24.7	70.6
24	5604640705	8	22	11	41	17.9	51.3
25	5604640788	14	24.5	25	63.5	27.8	79.4
26	5604640812	13	21	13	47	20.6	58.8
27	5604640820	12	22	13	47	20.6	58.8
28	5604640887	12.5	20	6	38.5	16.8	48.1
29	5604640937	16.5	13	15	44.5	19.5	55.6

2

1

3



B.E. International Program

Semester 1/2015 (August 17 - December 4, 2015)

EE451 INTERNATIONAL TRADE THEORY AND POLICY

Instructor: Assoc. Prof. Dr. Chayun Tantivasadakarn

NO.	Student I.D.	M1 (20)	M2 (30)	M3 (30)	Midterm (80)	Adj Midterm (35)	%
30	5604641034	12	15.5	15	42.5	18.6	53.1
31	5604641125	12	23	17	52	22.8	65.0
32	5604641265	16	23	17	56	24.5	70.0
33	5604641273	12	6	27	45	19.7	56.3
34	5604641281	12	12	6	30	13.1	37.5
35	5604641299	12	28	8	48	21.0	60.0
36	5604641364	20	27.5	18	65.5	28.7	81.9
37	5604641398	9	10	3	22	9.6	27.5
38	5604641455	absent			0	0.0	0.0
40	5604641547	13	17	23	53	23.2	66.3
41	5604641570	4	21	12	37	16.2	46.3
42	5604641596	14	26.5	15	55.5	24.3	69.4
43	5604641604	14	11.5	8	33.5	14.7	41.9
44	5604641638	16	20.5	18	54.5	23.8	68.1
45	5604641646	14	13.5	5	32.5	14.2	40.6
46	5604641653	9	15	9	33	14.4	41.3
47	5604641679	12	23.5	8	43.5	19.0	54.4
48	5604641729	15	19	11	45	19.7	56.3
49	5604641802	11	19.5	24	54.5	23.8	68.1
50	5604641828	11	12.5	12	35.5	15.5	44.4
51	5604641836	8	17	26	51	22.3	63.8
52	5604641851	10	9	4	23	10.1	28.8
53	5604641869	15	20.5	9	44.5	19.5	55.6
54	5604641919	10	17	8	35	15.3	43.8
55	5604641943	16.5	17	17	50.5	22.1	63.1
56	5604641950	17	18	13	48	21.0	60.0
57	5604641968	12	24	13	49	21.4	61.3
58	5604642008	15	14	11	40	17.5	50.0
59	5604642057	19	27	20	66	28.9	82.5

*

*



B.E. International Program

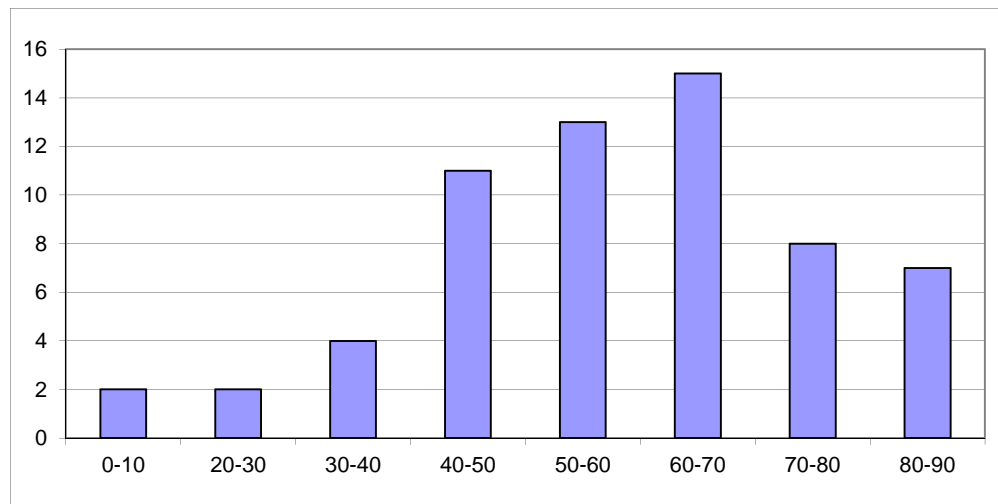
Semester 1/2015 (August 17 - December 4, 2015)

EE451 INTERNATIONAL TRADE THEORY AND POLICY

Instructor: Assoc. Prof. Dr. Chayun Tantivasadakarn

NO.	Student I.D.	M1 (20)	M2 (30)	M3 (30)	Midterm (80)	Adj Midterm (35)	%
60	5604642073	18	20	22	60	26.3	75.0
61	5604642149	14	17	11	42	18.4	52.5
62	5804930120	11	14	2	27	11.8	33.8
63	58004930062	11	27	8	46	20.1	57.5

Max	20	28	30	72	31.5	90
Average	13.3	19.0	15.2	45.9	20.1	57.4
Min	4	6	2	0	0	0
SD	3.3	5.5	7.7	14.8	6.5	18.4



X+1.5SD	85.0
X+1.25SD	80.4
X+SD	75.8
X	57.4
X-SD	38.9
X-1.25SD	34.3
X-1.5SD	29.7