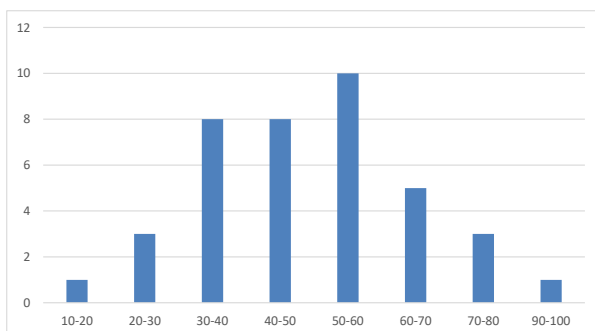


**B.E. International Program**

Subject: EE311 Microeconomic Theory (Sec.046401) 1/2022

NO.	Student I.D.	M1 (20)	M2 (15)	M3 (20)	M4 (15)	M5 (15)	M6 (10)	M7 (15)	Midterm (110)	Adj Midterm (40)	100%	Remark
1	6204640327	10.0	13.5	0.0	0.0	8.0	8.0	10.5	50.0	18.2	45.5	
2	6304640797	13.0	14.0	0.0	0.0	4.0	8.0	3.0	42.0	15.3	38.2	
3	6404640069	10.5	14.5	18.0	11.0	10.0	5.0	14.5	83.5	30.4	75.9	2
4	6404640085	14.0	2.0	3.0	5.0	9.5	4.0	12.0	49.5	18.0	45.0	
5	6404640119	13.0	6.0	3.0	3.0	10.0	7.0	9.5	51.5	18.7	46.8	
6	6404640135	7.0	3.5	5.0	8.0	7.0	2.0	13.5	46.0	16.7	41.8	
7	6404640176	3.0	11.5	5.0	3.0	10.0	3.5	12.0	48.0	17.5	43.6	
8	6404640200	12.0	5.0	3.0	3.0	10.5	5.0	12.0	50.5	18.4	45.9	
9	6404640234	15.5	3.5	10.0	8.0	12.5	7.0	12.5	69.0	25.1	62.7	
10	6404640242	11.5	8.0	10.0	2.0	14.0	8.0	11.5	65.0	23.6	59.1	
11	6404640267	0.0	3.5	12.0	4.0	6.0	5.0	11.0	41.5	15.1	37.7	
12	6404640275	8.0	3.0	0.0	0.0	11.0	7.0	12.0	41.0	14.9	37.3	
13	6404640317	2.0	2.0	3.0	3.0	4.5	4.0	3.0	21.5	7.8	19.5	*
14	6404640333	8.0	8.5	6.0	4.0	4.0	4.0	9.5	44.0	16.0	40.0	
15	6404640366	12.5	12.5	0.0	6.0	15.0	0.0	14.0	60.0	21.8	54.5	
16	6404640416	8.0	4.0	3.0	2.0	0.0	6.0	5.0	28.0	10.2	25.5	*
17	6404640465	5.0	6.0	8.0	6.0	5.0	6.0	9.5	45.5	16.5	41.4	
18	6404640523	12.5	4.0	18.0	3.0	13.0	10.0	14.5	75.0	27.3	68.2	
19	6404640549	18.0	4.0	0.0	4.0	14.0	9.0	12.0	61.0	22.2	55.5	
20	6404640556	11.0	8.0	5.0	7.0	9.5	4.0	13.0	57.5	20.9	52.3	
21	6404640572	12.0	3.0	10.0	2.0	3.0	8.5	4.0	42.5	15.5	38.6	
22	6404640630	11.0	5.0	8.0	8.0	12.5	4.0	12.0	60.5	22.0	55.0	
23	6404640705	4.0	8.0	12.0	0.0	14.0	7.0	13.0	58.0	21.1	52.7	
24	6404640895	5.0	2.5	6.0	2.0	5.5	8.0	4.0	33.0	12.0	30.0	
25	6404640952	8.0	4.0	7.0	4.5	15.0	9.0	14.5	62.0	22.5	56.4	
26	6404640986	11.0	13.0	8.0	9.5	11.5	5.0	13.0	71.0	25.8	64.5	
27	6404641034	15.0	15.0	18.0	14.0	14.5	9.5	15.0	101.0	36.7	91.8	1
28	6404641059	10.0	12.5	17.0	10.0	12.5	4.5	13.0	79.5	28.9	72.3	3
29	6404641067	10.0	4.0	3.0	3.0	6.5	4.0	10.0	40.5	14.7	36.8	
30	6404641075	5.0	5.0	6.0	6.0	5.5	3.0	10.0	40.5	14.7	36.8	
31	6404641117	5.0	2.5	6.0	3.0	6.0	7.0	3.0	32.5	11.8	29.5	
32	6404641125	4.0	4.5	5.0	3.0	3.0	7.0	5.0	31.5	11.5	28.6	
33	6404641158	16.0	10.5	13.0	3.0	10.5	5.0	6.0	64.0	23.3	58.2	
34	6404641265	7.5	9.5	10.0	12.5	12.0	5.0	13.0	69.5	25.3	63.2	
35	6404641315	12.0	6.5	12.0	9.5	13.5	3.0	11.5	68.0	24.7	61.8	
36	6404641323	8.5	9.5	8.0	6.0	11.0	6.0	10.0	59.0	21.5	53.6	
37	6404641356	15.5	6.0	7.0	8.5	9.0	7.0	11.0	64.0	23.3	58.2	
38	6404641372	9.0	11.0	12.0	11.0	14.0	9.0	13.0	79.0	28.7	71.8	
39	6404641380	5.0	5.0	3.0	0.0	10.5	6.0	10.5	40.0	14.5	36.4	

Max	18.0	15.0	18.0	14.0	15.0	10.0	15.0	101.0	36.7	91.8
Average	9.4	7.0	7.3	5.1	9.4	5.9	10.4	54.5	19.8	49.6
Min	0.0	2.0	0.0	0.0	0.0	0.0	3.0	21.5	7.8	19.5
SD	4.2	4.0	5.2	3.7	4.0	2.3	3.6	17.0	6.2	15.4



X+1.5SD	72.7
X+SD	65.0
X	49.6
X-SD	34.1
X-1.5SD	26.4