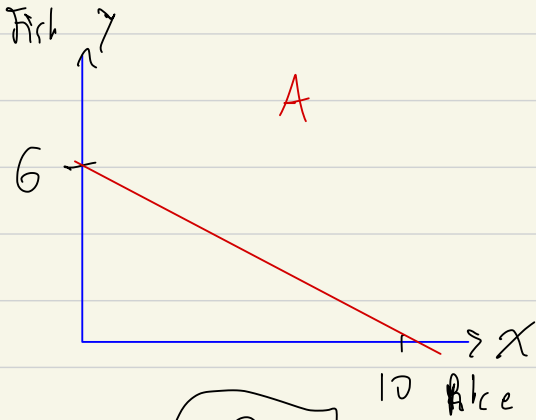
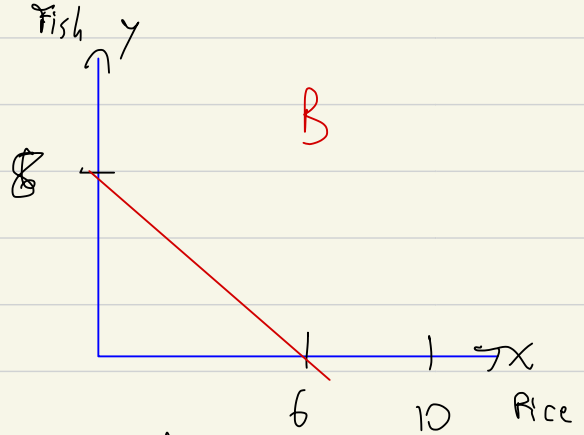


HW

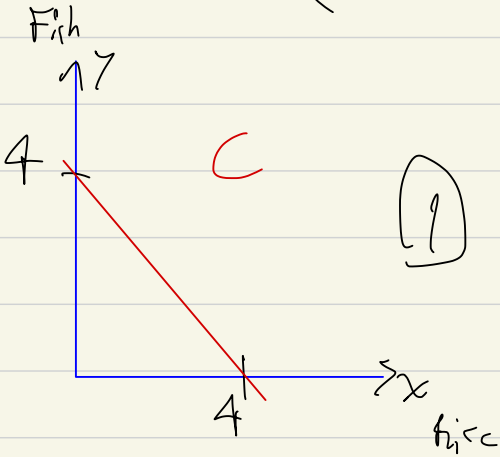
Farmer combine 3 farmers and show the PPC



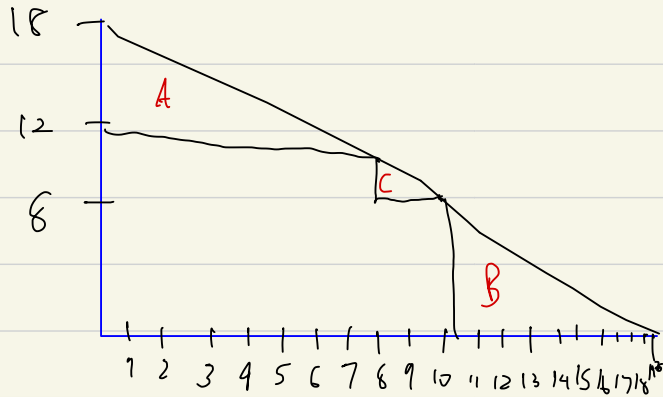
0.6



2.33



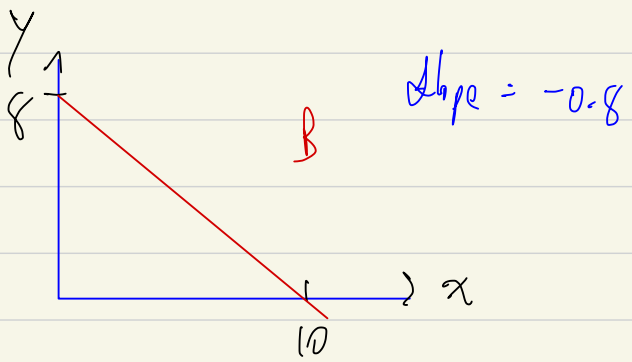
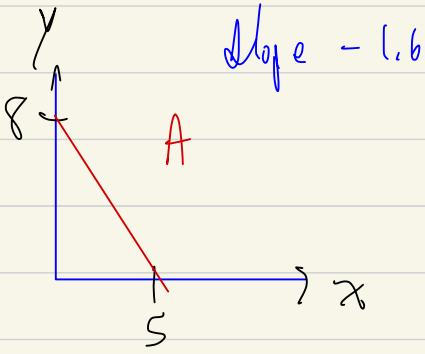
1



# HW

If the technology of producing  $x$  improved so much that the amount of  $x$  we can have double at all quantities

- How will be the PPC change?
- Cost of  $x$  higher?
- Cost of  $y$  higher?



	cost of $x$ / unit	cost of $y$ / unit
A	1.6	0.625
B	0.8	1.25

- cost of  $x$  is lower but on the other hand the cost of  $y$  is higher.