



EViews Training

The Basics:

EViews Desktop, Workfiles and Objects

Note: Data and Workfiles for examples in this tutorial are:

- ✓ Data: **Data.xlsx**
- ✓ Results: **Results.wf1**

What is EViews?

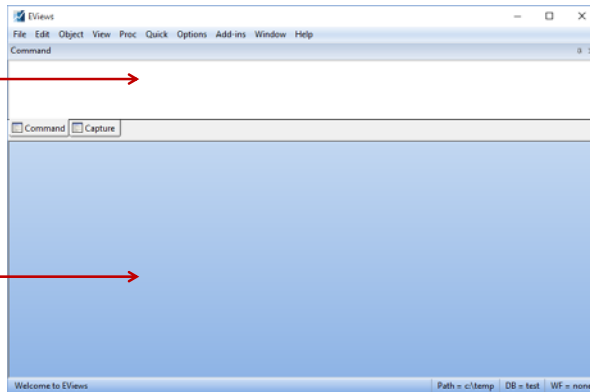


- EViews is an easy-to-use statistical, econometric, and economic modeling package.
- There are three ways to work in EViews:
 - Graphical user interface (using mouse and menus/dialogs).
 - Single commands (using the command window).
 - Program files (commands assembled in a script executed in batch mode).

EViews Desktop



Command Window

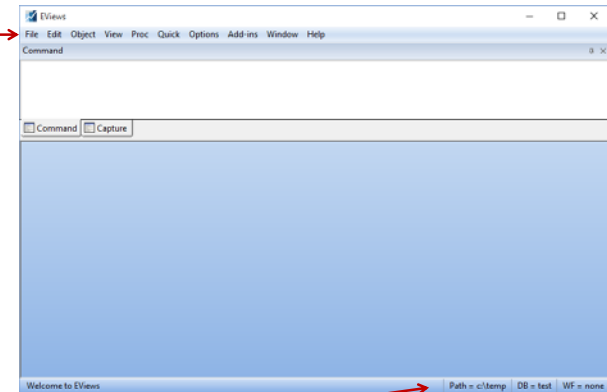


**Object Window/
Work Area**

EViews Desktop Details



Main Menu



Note: Path/Database/Workfile can be changed by double-clicking in each.

Path/directory Database Workfile

EViews Workfile and Objects



- EViews does NOT open up with a “blank” generic document (unlike Word®, Excel®, etc.).
- EViews documents (aka “workfiles”) need to be created and are not generic (they will contain information about your data, etc.).
- EViews is an “object”- oriented program. Objects are collections of information related to a particular analysis (series, groups, equations, graphs, tables).
- Workfiles are holders of these “objects”.

5

Object Types



Series, Groups and Equations are the most common objects in EViews.

	Alpha		Pool		Sym
	Coef		Rowvector		System
	Equation		Sample		Table
	Factor		Scalar		Text
	Graph		Series		Valmap
	Group		Spool		Var
	Logl		Sspace		Vector
	Matrix		String		
	Model		Svector		

6

EViews Workfile



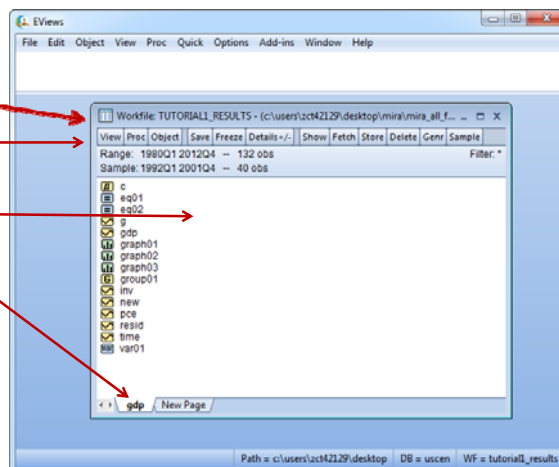
Workfile title bar

Workfile tool bar

Workfile Window

Workfile:

- ✓ Contains at least one page
- ✓ Each page contains a list of objects on that page



7

EViews Workfile (cont'd)



Name of the workfile

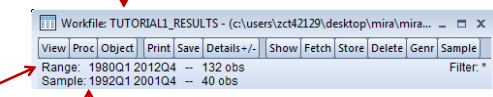
(Tutorial1_results in this example)

Structure of the workfile

- The data in this example is *dated* and has quarterly frequency covering the period from 1980 to 2012.

- **Range:** shows the entire range of the data in the workfile. Here the range is from Q1 1980 to Q4 2012

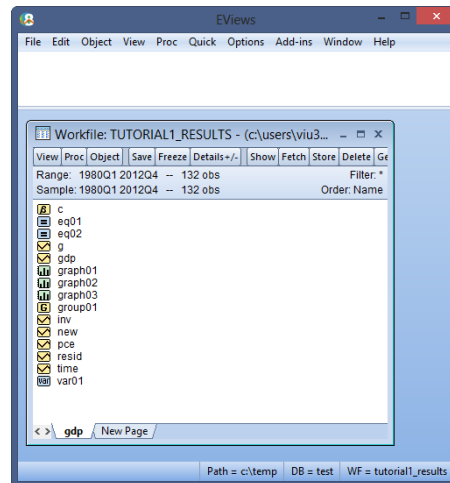
- **Sample:** This is the part of data we are currently working with. In this example, the sample runs from Q1 1992 to Q4 2001.



8

EViews Workfile and Objects

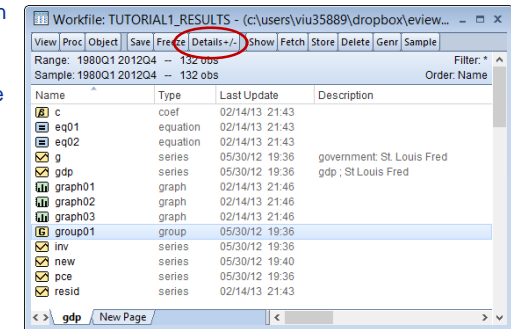
- This screenshot shows a list of **Objects** in the workfile.
- It is color-coded by **Object** type:
 - ✓ Yellow icons are data objects
 - ✓ Blue icons are estimation objects
 - ✓ Green icons are view objects (tables, graphs, etc...)
- Double clicking on one of these Object icons will open it up.
- Each **Object** has its own menu.
- Once an object is open, the menus in EViews change to represent the features available for that object.



9

EViews Workfile and Objects (cont'd)

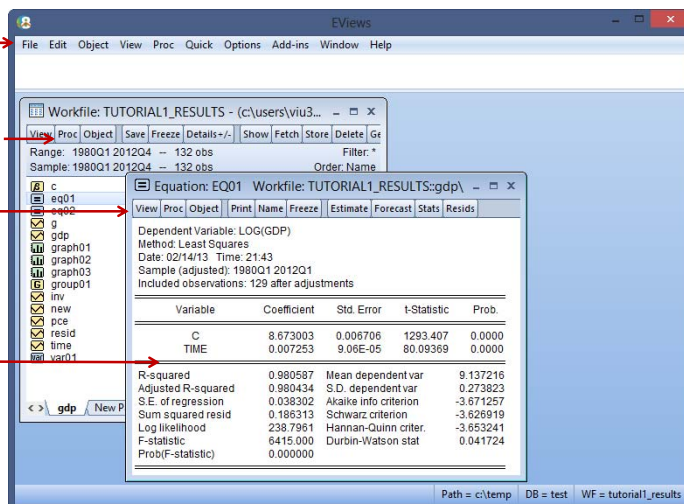
- EViews 8 provides you with a more detailed look of the objects in your workfile.
- For the **"Details"** view, Click on **View** → **Details +/-** on the workfile toolbar (or double click the **Details +/-** button on the workfile toolbar).
- The view changes as shown here.
- Each object now has a separate column in the details view.
- You may sort the objects by an attribute (Name, Type, etc.) by clicking on the column header.
- You can also resize or drag the columns which allows you to alter their position and width.



10

The Object Window

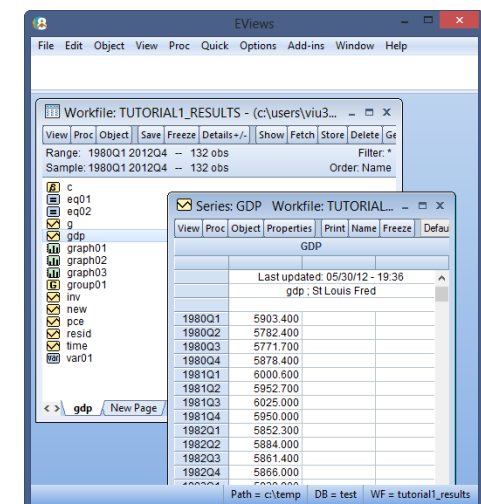
- Main menu** → File Edit Object View Proc Quick Options Add-ins Window Help
- Workfile Toolbar** → View Proc Object Save Freeze Details +/- Show Fetch Store Delete Gr
- Object Toolbar** → View Proc Object Print Name Freeze Estimate Forecast Stats Resids
- (in this example, equation toolbar)
- Object Window** → R-squared Adjusted R-squared S.E. of regression Sum squared resid Log likelihood F-statistic Prob(F-statistic)
- (in this example, equation window)



11

The Series Object

- This is the main data object.
- gdp** - has a yellow icon with a little line graph in it.
- It contains one column of data.
- Opening a series will reveal a spreadsheet view with a single column showing the data in the series.

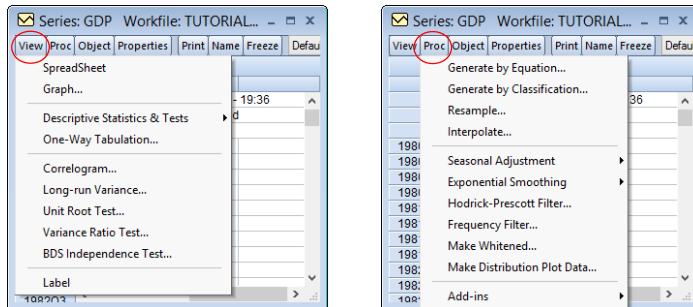


12

The Series Object (cont'd)

To open a Series

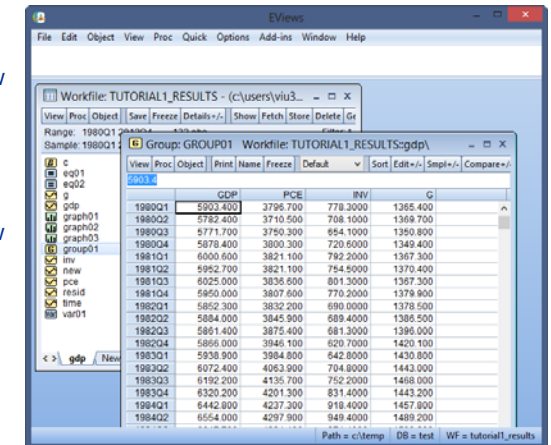
1. Double click on the series.
2. Once a series is open, you can click on **View** and **Proc** menus in the workflow to see available actions. Since a Series is a single column of data, only actions for a single column of data are available (views and tests).



13

The Group Object

- This is a collection of series objects.
- **G** group01 - has a yellow icon with a capital G.
- It contains multiple columns of data.
- Opening a group will display a spreadsheet view with multiple columns showing the data in each series in the group.

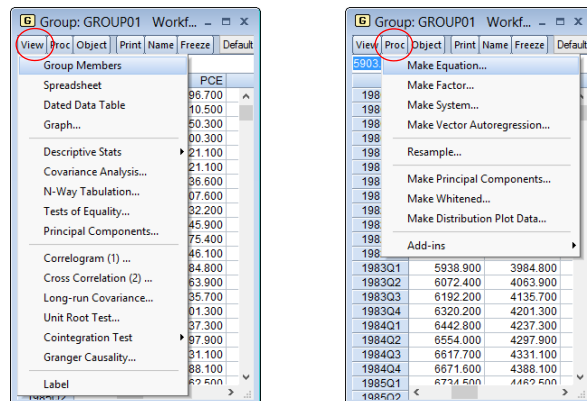


14

The Group Object (cont'd)

To open a Group

1. Double click on **G**.
2. Once a Group is open, you can click on **View** and **Proc** menus to see available actions. Actions that require multiple columns of data are now available (views and tests).



15

The Equation Object

- This is a single equation estimation object.
- **=** eq01 -- has a blue icon with an equal (=) sign.
- This is the main estimation object in EViews.
- Opening an equation will reveal the main results of the estimation.

Variable	Coefficient	Std. Error	t-Statistic	Prob.
C	8.673003	0.006706	1293.407	0.0000
TIME	0.007253	9.06E-05	80.09369	0.0000

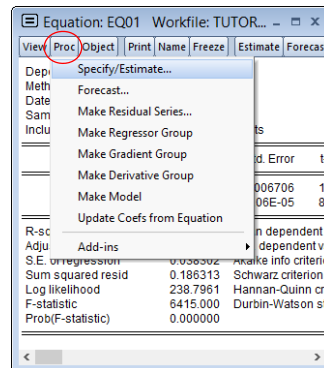
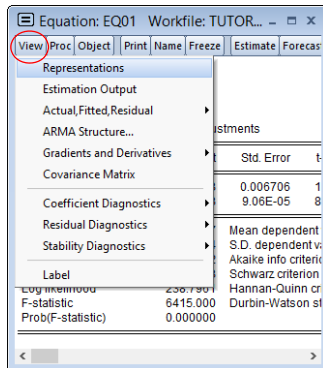
R-squared	0.980587	Mean dependent var	9.137218
Adjusted R-squared	0.980434	S.D. dependent var	0.273823
S.E. of regression	0.038302	Akaike info criterion	-3.671257
Sum squared resid	0.186313	Schwarz criterion	-3.626919
Log likelihood	238.7961	Hannan-Quinn criter.	-3.653241
F-statistic	6415.000	Durbin-Watson stat	0.041724
Prob(F-statistic)	0.000000		

16

The Equation Object (cont'd)


To open an Equation Object

1. Double click on .
2. Once an Equation is open, you can click on **View** and **Proc** menus to see available actions. Some of the items in the **View** and **Proc** menus will depend on the type of Equation that was estimated.



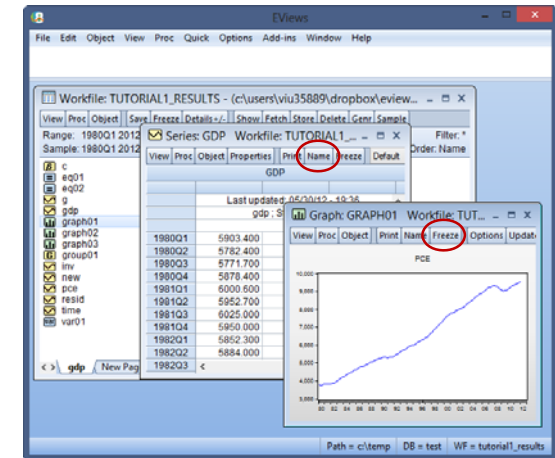
17

Views Objects

- These objects hold “views” of data or estimation objects.
-  graph01 - has a green icon.
- It is used to “freeze” a view of another object in time.

To create this view

1. Press the **Freeze** button on another object (*gdp* series, for example).
2. Use the **Name** button to save it in the workflow.
3. Click **OK**.



18

Commands

- The command pane provides a scrollable record of the commands typed.

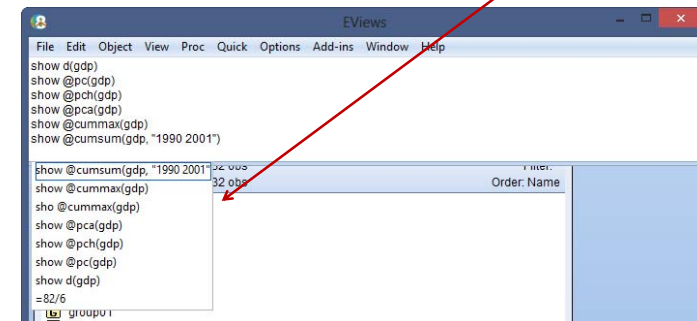


- You can scroll up to view previously executed commands.
- If you hit **Enter** in any previous lines, EViews will copy the line where the cursor is and execute that command again.

19

Commands (cont'd)

- To recall a list of previous commands in the order in which they were entered use “**CTRL+UP**”. The last command in the list will display in the command window.
- Hold down the **CTRL** key and press **UP** arrow to display previous commands.
- For a record of the last 30 commands, press “**CTRL+J**”.



20