

EE212 (2/2012) Section 1

NO. (Section 1)	Student I.D.	1	2	3				Total (40)
		(12)	(12)	V (4)	M (6)	G (6)	(16)	
1	5504640086	5.5	8.0	-	-	2.0	2.0	15.5
2	5504640094	12.0	10.0	3.0	6.0	5.0	14.0	36.0
3	5504640136	12.0	10.0	3.0	6.0	4.0	13.0	35.0
4	5504640151	11.0	11.0	3.0	6.0	6.0	15.0	37.0
5	5504640169	12.0	10.0	3.0	6.0	2.0	11.0	33.0
6	5504640318	6.0	10.0	2.0	3.0	1.0	6.0	22.0
7	5504640359	5.5	10.0	-	2.0	-	2.0	17.5
8	5504640367	12.0	10.0	3.0	2.0	1.0	6.0	28.0
9	5504640375	9.5	2.0	-	2.0	-	2.0	13.5
10	5504640391	5.5	10.0	3.0	6.0	2.0	11.0	26.5
11	5504640458	12.0	8.0	2.0	6.0	3.0	11.0	31.0
12	5504640466	12.0	10.0	2.0	3.0	1.0	6.0	28.0
13	5504640508	10.5	11.0	2.0	6.0	3.0	11.0	32.5
14	5504640557	6.0	8.0	3.0	5.0	2.0	10.0	24.0
15	5504640565	5.0	2.0	-	-	1.0	1.0	8.0
16	5504640573	11.0	8.0	1.0	-	-	1.0	20.0
17	5504640631	7.5	10.0	-	6.0	2.0	8.0	25.5
18	5504640656	1.0	0.0	-	-	-	0.0	1.0
19	5504640748	2.0	10.0	-	3.0	-	3.0	15.0
20	5504640771	12.0	8.0	-	3.0	-	3.0	23.0
21	5504640813	7.5	10.0	-	1.0	1.0	2.0	19.5
22	5504640839	7.0	10.0	-	3.0	-	3.0	20.0
23	5504640862	7.5	8.0	1.0	2.0	-	3.0	18.5
24	5504640870	7.5	8.0	1.0	6.0	2.0	9.0	24.5
25	5504640888	9.5	11.0	1.0	6.0	3.0	10.0	30.5
26	5504640938	9.5	8.0	1.0	5.0	3.0	9.0	26.5
27	5504640946	9.5	7.0	1.0	1.0	-	2.0	18.5
28	5504640995	7.0	11.0	3.0	3.0	3.0	9.0	27.0
29	5504641035	9.5	7.0	1.0	-	1.0	2.0	18.5
30	5504641068	7.5	2.0	-	1.0	-	1.0	10.5
31	5504641084	7.0	8.0	1.0	4.0	1.0	6.0	21.0
32	5504641241	8.5	7.0	3.0	6.0	4.0	13.0	28.5
33	5504641274	7.0	1.0	-	-	-	0.0	8.0
34	5504641340	5.0	8.0	3.0	6.0	3.0	12.0	25.0
35	5504641381	9.5	8.0	2.0	3.0	2.0	7.0	24.5
36	5504641415	9.5	8.0	3.0	3.0	1.0	7.0	24.5
37	5504641472	12.0	8.0	3.0	6.0	5.0	14.0	34.0
38	5504641480	6.0	4.0	2.0	6.0	4.0	12.0	22.0
39	5504641498	12.0	6.0	1.0	-	-	1.0	19.0
40	5504641506	11.0	11.0	4.0	6.0	3.0	13.0	35.0

NO. (Section 1)	Student I.D.	1	2	3				Total (40)
		(12)	(12)	V (4)	M (6)	G (6)	(16)	
41	5504641563	12.0	11.0	2.0	1.0	1.0	4.0	27.0
42	5504641605	5.5	7.0	2.0	6.0	-	8.0	20.5
43	5504641613	12.0	9.0	3.0	3.0	-	6.0	27.0
44	5504641621	2.5	10.0	-	3.0	1.0	4.0	16.5
45	5504641647	7.5	10.0	3.0	1.0	-	4.0	21.5
46	5504641670	8.5	8.0	2.0	3.0	-	5.0	21.5
47	5504641696	7.0	6.0	3.0	6.0	-	9.0	22.0
48	5504641720	9.5	5.0	3.0	-	2.0	5.0	19.5
49	5504641738	12.0	11.0	2.0	6.0	4.0	12.0	35.0
50	5504641761	11.0	10.0	3.0	-	1.0	4.0	25.0
51	5504641795	8.0	3.0	-	-	1.0	1.0	12.0
52	5504641811	7.5	9.0	-	-	-	0.0	16.5
53	5504641878	8.5	11.0	2.0	6.0	3.0	11.0	30.5
54	5504641910	8.0	8.0	-	1.0	-	1.0	17.0
55	5504641936	12.0	10.0	4.0	6.0	4.0	14.0	36.0
56	5504641977	12.0	10.0	1.0	1.0	1.0	3.0	25.0
57	5504642066	11.0	8.0	2.0	3.0	3.0	8.0	27.0
58	5504642074	11.0	11.0	2.0	3.0	1.0	6.0	28.0
59	5504642090	7.5	11.0	3.0	3.0	2.0	8.0	26.5
60	5504642124	11.0	10.0	2.0	-	-	2.0	23.0

EE212 (2/2012) Section 2

NO. (Section 2)	Student I.D.	1	2	3				Total (40)
		(12)	(12)	V (4)	M (6)	G (6)	(16)	
1	5502930778	12.0	10.0	1.0	-	-	1.0	23.0
2	5502930794	12.0	10.0	3.0	4.0	3.0	10.0	32.0
3	5502930802	12.0	10.0	-	3.0	-	3.0	25.0
4	5502930810	12.0	8.0	1.0	4.0	2.0	7.0	27.0
5	5504640060	11.0	10.0	3.0	6.0	2.0	11.0	32.0
6	5504640078	11.0	9.0	-	3.0	1.0	4.0	24.0
7	5504640193	7.0	11.0	-	-	-	0.0	18.0
8	5504640219	12.0	10.0	4.0	6.0	4.0	14.0	36.0
9	5504640235	9.0	11.0	2.0	1.0	1.0	4.0	24.0
10	5504640243	9.5	6.0	4.0	4.0	3.0	11.0	26.5
11	5504640268	4.5	8.0	4.0	2.0	3.0	9.0	21.5
12	5504640276	10.5	10.0	-	6.0	1.0	7.0	27.5
13	5504640284	9.5	6.0	-	6.0	3.0	9.0	24.5
14	5504640326	8.5	8.0	1.0	2.0	-	3.0	19.5
15	5504640334	2.0	7.0	2.0	3.0	1.0	6.0	15.0
16	5504640342	12.0	10.0	3.0	1.0	-	4.0	26.0
17	5504640409	12.0	10.0	2.0	3.0	3.0	8.0	30.0
18	5504640417	11.0	10.0	2.0	6.0	4.0	12.0	33.0
19	5504640474	12.0	7.0	-	1.0	-	1.0	20.0
20	5504640524	11.0	8.0	3.0	6.0	4.0	13.0	32.0
21	5504640532	11.0	8.0	2.0	3.0	1.0	6.0	25.0
22	5504640540	5.0	8.0	-	2.0	1.0	3.0	16.0
23	5504640599	10.5	11.0	2.0	2.0	-	4.0	25.5
24	5504640607	0.5	11.0	2.0	1.0	-	3.0	14.5
25	5504640623	6.0	3.0	1.0	6.0	3.0	10.0	19.0
26	5504640672	12.0	8.0	2.0	-	-	2.0	22.0
27	5504640763	9.5	10.0	2.0	6.0	3.0	11.0	30.5
28	5504640797	10.5	8.0	3.0	6.0	4.0	13.0	31.5
29	5504640805	12.0	10.0	3.0	3.0	3.0	9.0	31.0
30	5504640821	8.5	8.0	2.0	2.0	2.0	6.0	22.5
31	5504640847	12.0	8.0	1.0	-	1.0	2.0	22.0
32	5504640904	6.0	11.0	-	3.0	1.0	4.0	21.0
33	5504640912	6.5	5.0	2.0	2.0	-	4.0	15.5
34	5504640920	9.5	11.0	3.0	3.0	2.0	8.0	28.5
35	5504640987	11.0	11.0	1.0	6.0	4.0	11.0	33.0
36	5504641001	2.0	8.0	2.0	2.0	-	4.0	14.0
37	5504641076	9.5	8.0	-	-	-	0.0	17.5
38	5504641092	9.5	10.0	3.0	6.0	3.0	12.0	31.5
39	5504641118	6.0	10.0	-	1.0	-	1.0	17.0
40	5504641159	12.0	11.0	2.0	6.0	4.0	12.0	35.0

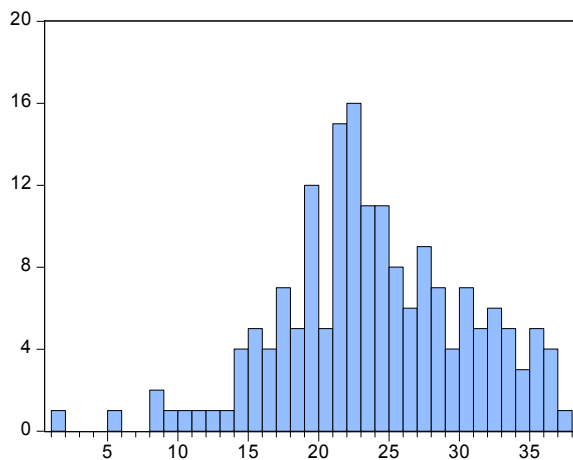
NO. (Section 2)	Student I.D.	1	2	3				Total (40)
		(12)	(12)	V (4)	M (6)	G (6)	(16)	
41	5504641167	9.5	10.0	2.0	-	-	2.0	21.5
42	5504641191	8.0	11.0	3.0	6.0	2.0	11.0	30.0
43	5504641324	11.0	10.0	3.0	6.0	3.0	12.0	33.0
44	5504641373	0.5	7.0	2.0	4.0	2.0	8.0	15.5
45	5504641407	9.5	11.0	4.0	6.0	4.0	14.0	34.5
46	5504641449	9.0	8.0	2.0	-	-	2.0	19.0
47	5504641522	4.0	8.0	-	-	2.0	2.0	14.0
48	5504641597	3.5	6.0	3.0	4.0	3.0	10.0	19.5
49	5504641654	4.5	12.0	1.0	3.0	3.0	7.0	23.5
50	5504641779	9.5	7.0	2.0	3.0	1.0	6.0	22.5
51	5504641837	9.5	8.0	2.0	2.0	2.0	6.0	23.5
52	5504641852	10.0	9.0	2.0	1.0	2.0	5.0	24.0
53	5504641985	6.0	11.0	1.0	2.0	2.0	5.0	22.0
54	5504641993	6.0	11.0	-	2.0	-	2.0	19.0
55	5504642041	8.5	3.0	-	3.0	2.0	5.0	16.5
56	5504642132	9.5	7.0	-	1.0	-	1.0	17.5

EE212 (2/2012) Section 3

NO. (Section 3)	Student I.D.	1	2	3				Total (40)	
		(12)	(12)	V (4)	M (6)	G (6)	(16)		
1	5404640285	9.5	10.0	-	3.0	-	3.0	22.5	
2	5504640029	5.5	10.0	2.0	2.0	1.0	5.0	20.5	
3	5504640102	5.0	10.0	2.0	-	1.0	3.0	18.0	
4	5504640110	7.0	10.0	2.0	6.0	3.0	11.0	28.0	
5	5504640128	Absence							
6	5504640227	7.5	10.0	3.0	2.0	-	5.0	22.5	
7	5504640292	6.5	11.0	4.0	6.0	2.0	12.0	29.5	
8	5504640383	9.5	11.0	2.0	1.0	4.0	7.0	27.5	
9	5504640425	3.5	10.0	1.0	3.0	-	4.0	17.5	
10	5504640433	6.5	10.0	2.0	-	1.0	3.0	19.5	
11	5504640441	9.0	3.0	3.0	6.0	-	9.0	21.0	
12	5504640482	9.5	8.0	2.0	6.0	2.0	10.0	27.5	
13	5504640490	7.5	8.0	1.0	1.0	-	2.0	17.5	
14	5504640516	9.5	11.0	3.0	4.0	2.0	9.0	29.5	
15	5504640615	6.0	12.0	2.0	1.0	1.0	4.0	22.0	
16	5504640664	2.0	3.0	-	-	-	0.0	5.0	
17	5504640698	8.5	10.0	3.0	1.0	-	4.0	22.5	
18	5504640706	3.5	1.0	-	6.0	1.0	7.0	11.5	
19	5504640714	12.0	10.0	4.0	6.0	4.0	14.0	36.0	
20	5504640755	6.5	8.0	4.0	2.0	1.0	7.0	21.5	
21	5504640854	9.5	11.0	1.0	-	2.0	3.0	23.5	
22	5504640896	10.5	12.0	3.0	6.0	1.0	10.0	32.5	
23	5504640979	8.5	10.0	1.0	2.0	-	3.0	21.5	
24	5504641043	8.5	11.0	-	2.0	-	2.0	21.5	
25	5504641050	5.0	8.0	1.0	-	-	1.0	14.0	
26	5504641100	7.0	8.0	-	3.0	-	3.0	18.0	
27	5504641126	10.0	6.0	-	3.0	-	3.0	19.0	
28	5504641134	10.0	10.0	3.0	6.0	4.0	13.0	33.0	
29	5504641209	10.0	8.0	3.0	2.0	-	5.0	23.0	
30	5504641217	3.5	8.0	3.0	6.0	2.0	11.0	22.5	
31	5504641233	12.0	9.0	3.0	6.0	4.0	13.0	34.0	
32	5504641258	5.0	8.0	2.0	6.0	2.0	10.0	23.0	
33	5504641266	0.5	6.0	1.0	-	2.0	3.0	9.5	
34	5504641282	10.0	11.0	3.0	1.0	1.0	5.0	26.0	
35	5504641290	8.5	12.0	-	-	1.0	1.0	21.5	
36	5504641308	5.0	8.0	3.0	3.0	2.0	8.0	21.0	
37	5504641357	9.5	11.0	2.0	6.0	2.0	10.0	30.5	
38	5504641365	12.0	11.0	3.0	-	-	3.0	26.0	
39	5504641431	7.0	11.0	2.0	6.0	4.0	12.0	30.0	
40	5504641456	5.0	7.0	-	6.0	3.0	9.0	21.0	

NO. (Section 3)	Student I.D.	1	2	3				Total (40)
		(12)	(12)	V (4)	M (6)	G (6)	(16)	
41	5504641464	8.5	12.0	3.0	4.0	2.0	9.0	29.5
42	5504641514	10.5	8.0	3.0	1.0	1.0	5.0	23.5
43	5504641530	9.5	10.0	3.0	6.0	3.0	12.0	31.5
44	5504641548	5.5	11.0	2.0	3.0	-	5.0	21.5
45	5504641639	11.0	10.0	2.0	6.0	-	8.0	29.0
46	5504641688	11.0	10.0	4.0	6.0	4.0	14.0	35.0
47	5504641712	7.5	8.0	3.0	3.0	2.0	8.0	23.5
48	5504641746	9.5	11.0	1.0	3.0	-	4.0	24.5
49	5504641753	8.5	10.0	1.0	3.0	-	4.0	22.5
50	5504641845	9.5	10.0	3.0	1.0	2.0	6.0	25.5
51	5504641886	4.5	7.0	3.0	6.0	3.0	12.0	23.5
52	5504641894	6.5	8.0	3.0	2.0	-	5.0	19.5
53	5504641902	12.0	10.0	2.0	3.0	1.0	6.0	28.0
54	5504641944	11.0	8.0	1.0	-	1.0	2.0	21.0
55	5504641951	9.5	12.0	2.0	3.0	-	5.0	26.5
56	5504642025	5.5	12.0	1.0	6.0	-	7.0	24.5
57	5504642082	9.5	10.0	4.0	6.0	3.0	13.0	32.5
58	5504642108	12.0	8.0	-	2.0	-	2.0	22.0
59	5504642140	5.5	10.0	1.0	4.0	2.0	7.0	22.5

For All Sections	1	2	3				Total (40)
	(12)	(12)	V (4)	M (6)	G (6)	(16)	
Average	8.45	8.78	1.79	3.16	1.53	6.48	23.71
SD	2.90	2.38	1.25	2.25	1.45	4.09	6.61
Max	12.00	12.00	4.00	6.00	6.00	15.00	37.00
Min	0.50	1.00	0.00	0.00	0.00	0.00	1.00



Series: EE212_MIDTERM_SCORE_ALL
Sample 1 174
Observations 174

Mean 23.70977
Median 23.25000
Maximum 37.00000
Minimum 1.000000
Std. Dev. 6.614091
Skewness -0.274972
Kurtosis 3.262234

Jarque-Bera 2.691238
Probability 0.260379