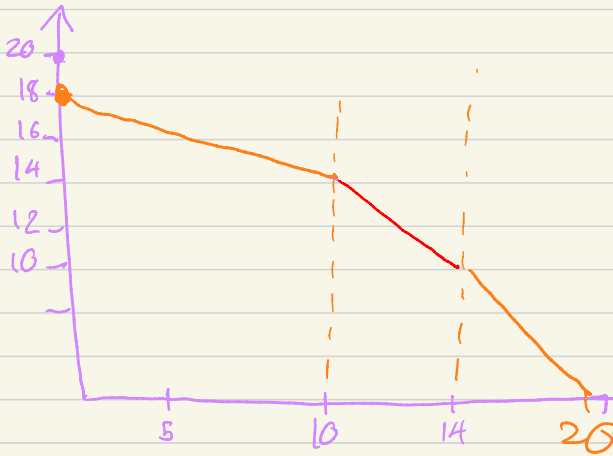
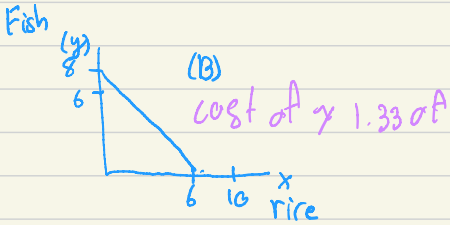
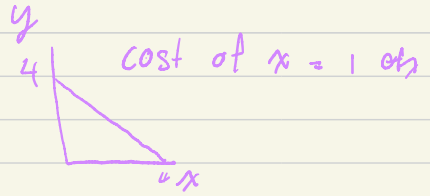
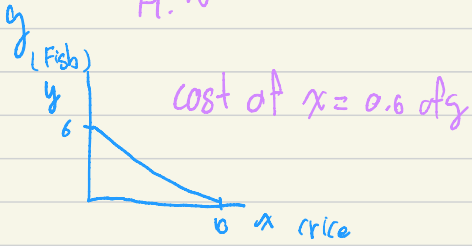
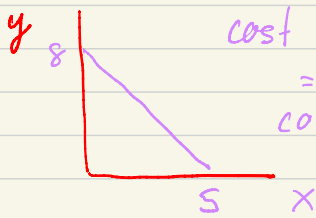


H.W

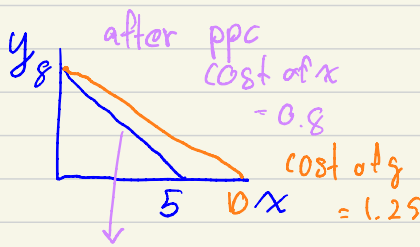


H.W. If the technology of producing  $x$  improve so much that the amount of  $x$  we can have doubles at all quantities of  $y$ . How will PPC below change



cost of  $x$   
 $= 1.6$   
 cost of  $y = 0.625$

cost of  $x$  is higher?  
 cost of  $y$  is higher?



after ppc  
 cost of  $x$   
 $= 0.8$   
 cost of  $y$   
 $= 1.25$

cost of  $x$  is lower

cost of  $y$  is Higher