



Urban Development in CLMV

Faculty of Economics, Thammasat University

Outline

01 Overview

02 Characteristics of urbanization

03 Urbanization patterns

04 Emerging growth patterns

05 Conclusion

06

Overview

- Most of the large cities in CLMV were once the seats of ancient Kingdoms and are located along waterways needed for movement of goods and people
- When European colonial powers came to the region, they established their ports of trade in these cities
- With increased intra regional trade, border towns have gained importance in the region



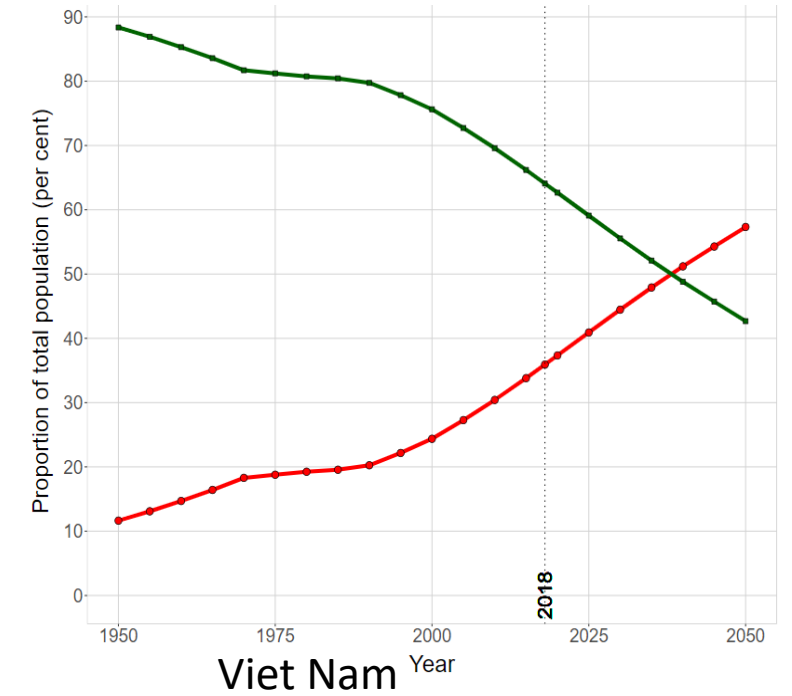
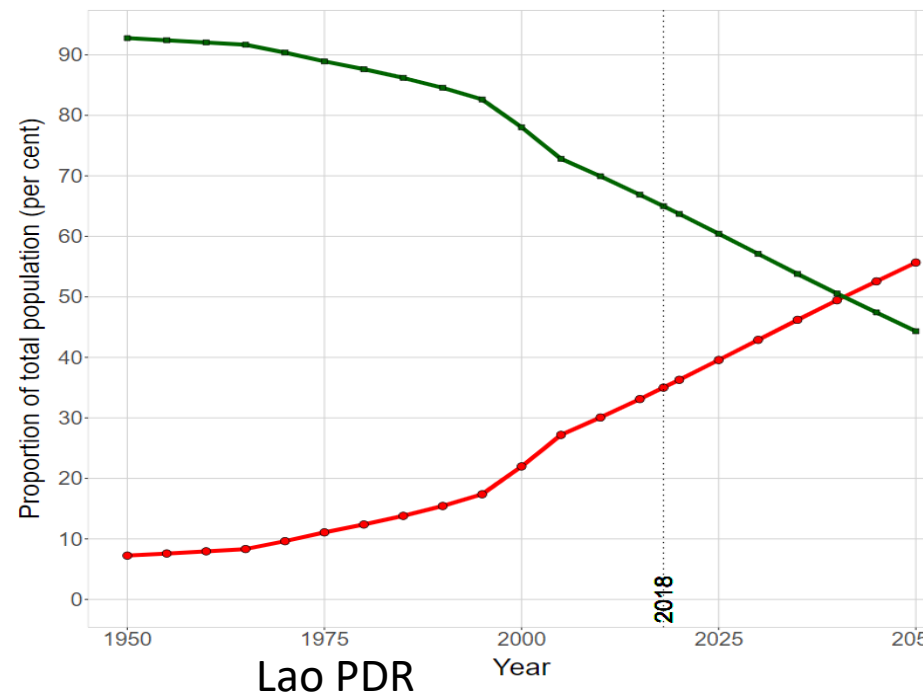
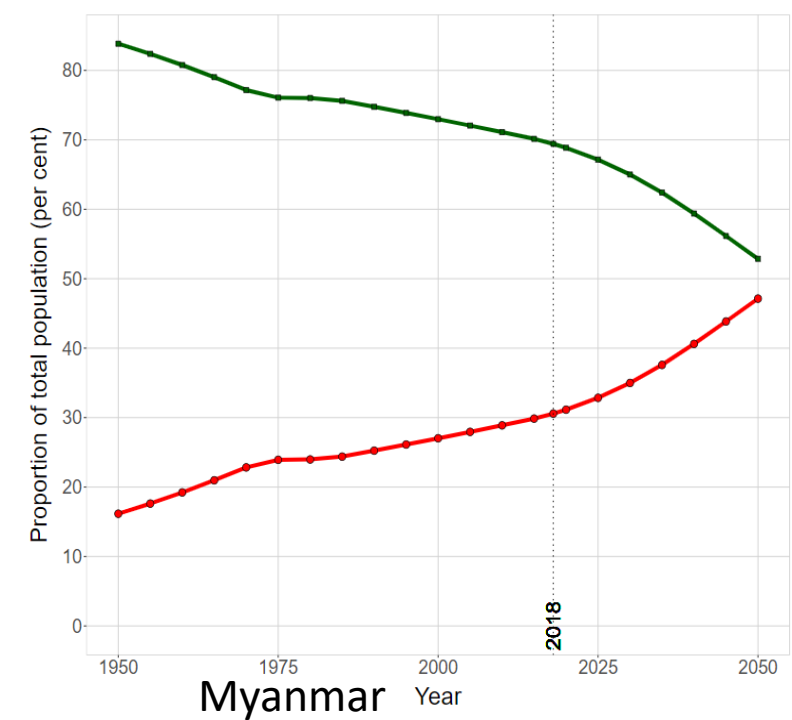
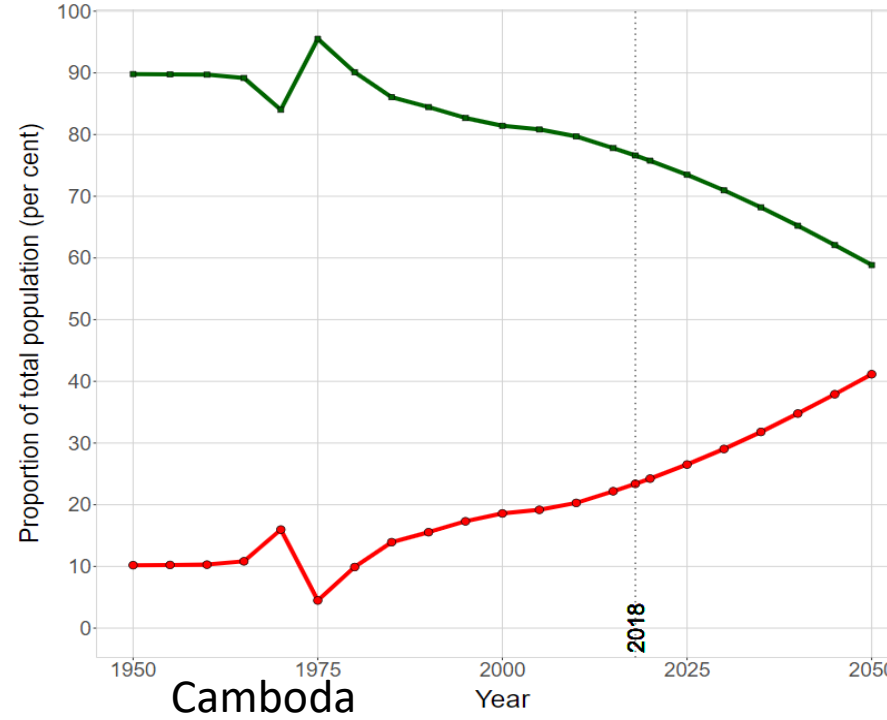
Primary and secondary cities

	Primary City	Population (000)	Secondary Cities	Population (000)
Cambodia	Phnom Penh	1,800	Sihanoukville	156
			Battambang	150
			Siem Reap	139
Lao PDR	Vientiane	1,000	Savannakhet	120
			Pakse	80
			Luang Prabang	90
Myanmar	Nay Pyi Taw	4,705	Mandalay	1,138
			Mawlamyine	498
			Bago	415
Vietnam	Hanoi	7,100	Ha Noi	6,270
			Hai Phong	1,241
			Can Tho	1,108

Characteristics of urbanization in CLMV

	Economic development	Urban development
- 1980s	<ul style="list-style-type: none">- period of economic and political reforms; shift from state-led to market based approach	<ul style="list-style-type: none">- increased diversification of rural employment; more non-farm activities
- 1990s	<ul style="list-style-type: none">- opening up of economies- gradual inflow of foreign aid- improvements in road transportation	<ul style="list-style-type: none">- more job opportunities in urban areas- increased mobility and rural-urban migration
- 2000s	<ul style="list-style-type: none">- further sector reforms, development of SEZs, increased foreign direct investment, easement of cross-border movements, rise in tourism	<ul style="list-style-type: none">- Increased urban-rural linkages- Improved urban infrastructure and services- Increased congestion, environmental pollution

Urban vs rural population



Your Date Here

Urbanization patterns

Design Option #1

Continued dominance of primary cities

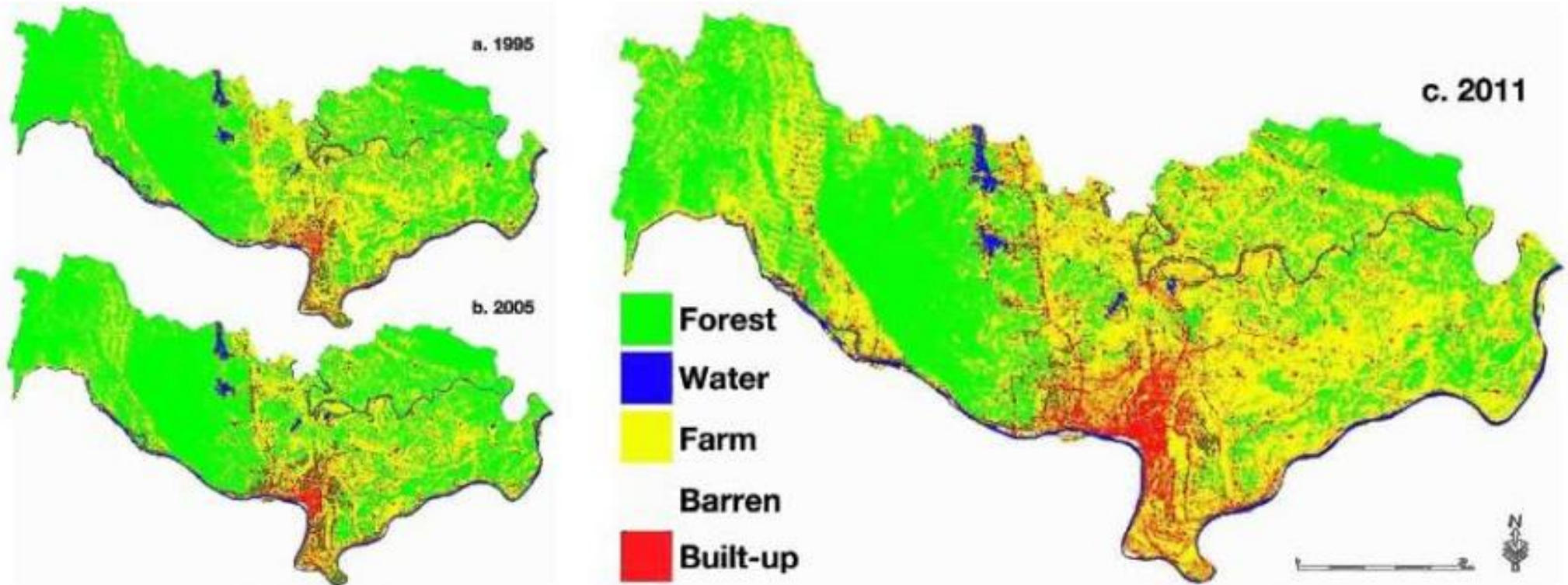
- Largest cities in CLMV will continue to grow as these are the centers of finance, business and administration.
- With more migration and the need to expand, cities will annex more land in the outlying districts
- Problems of infrastructure and urban services will increase



Built up area of Phnom Penh, 2001-2015



Built up area, Vientiane, 1995-2011



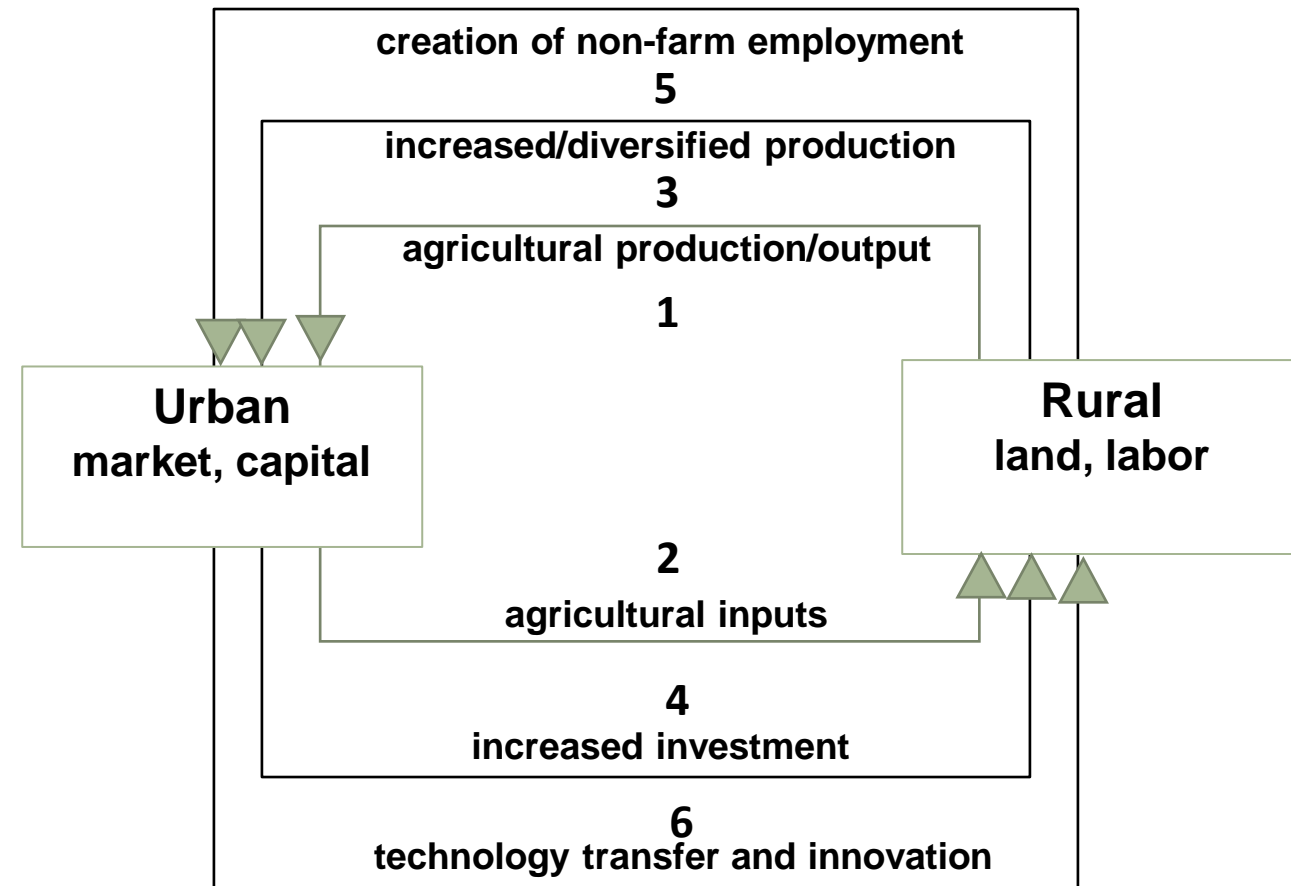
Development of small and medium towns

- Small and medium towns are potential engines of growth
- Serve as markets for agricultural goods to their surrounding areas
- Creates employment and links between rural and regional markets



Increased rural-urban linkages

- Agriculture will still play a major role; urban-rural links will intensify
- Increased agricultural output results in surplus; which farmers can sell to the market
- Profits can buy agriculture inputs or diversify production
- Capital accumulates and can be used to increase investment
- Result: non-farm employment and acquisition of technology





[This Photo](#) by Unknown Author is licensed under [CC BY-SA](#)

EMERGING GROWTH CLUSTERS

Emerging urban growth centers

- Several types of towns are expected to grow quickly while others will decline
- border towns
- towns along economic corridors
- tourist towns
- towns that serve as logistics centers and special economic zones

Border towns

- Increased inter regional trade and improvements in transportation have created opportunities for the development of border towns; examples:
- Savannakhet-Mukdahan,
- Lao Bao-Dansavanh (Laos-Viet Nam)
- Mae Sot-Myawaddy (Thailand-Myanmar)
- Poipet-Aranyaprathet (Cambodia-Thailand)
- Bavet-Moc Bai (Cambodia-Viet Nam)
- Lao Cai-Hekou (Viet Nam-China)



Tourism-based towns

- With improved connectivity and transportation, ease of access, relative security and more disposable incomes, intra-regional tourism has transformed various historical and cultural sites into tourist areas. These include:
 - Siem Reap and Sihanoukville (Cambodia)
 - Hoi An, Hue, Nha Trang (Viet Nam)
 - Luang Prabang and Pakse (Lao PDR)
 - Mandalay and Bagan (Myanmar)



Towns along economic corridors

- Some towns are strategically located along economic corridors. With the benefits of investments in commerce, transport, and other infrastructure, these towns have potential to accelerate economic growth. Examples:
- Savannakhet, Luang Prabang, Pakse (Lao PDR)
- Battambang, Bavet, Poipet (Cambodia)
- Da Nang, Thanh Hoa, Nha Trang (Viet Nam)
- Mandalay, Bagan (Myanmar)



Special economic zones

- FDI has played an important role in accelerating development of SEZs
- Government role: provide land, infrastructure and a combination of tax breaks, labor regulations and other incentives to attract private sector
- SEZs employment but also stimulate other investments and entrepreneurial activities through capital, technology and market access



Special economic zones



Urban growth clusters

Hanoi-Haiphong-Halong
Kunming-Hanoi
Nanning-Hanoi
Danang-Savannakhet-Udon Thani
Vientiane-Udon Thani
Bangkok Extended Metro Region
Bangkok-Chiangmai
Phuket
Siem Reap-Battambang
Phnom Penh-Sihanoukville
Phnom Penh-Ho Chi Minh City
Can Tho-HCMC-Nha Trang
Yangon



Conclusion

- Urbanization is inevitable and will continue into the future as rural-urban migration accelerates in CLMV countries.
- Major economic growth will be in urban areas with economies of scale and concentration of economic activities occurring in cities
- However growth will vary across cities, depending on infrastructure investments, human resource capacity and ability to attract private sector investments

Conclusion

- Urban growth follows economic growth; however government capacity will need improvement to address issue of uncontrolled growth
- Urban development in CLMV countries is rapid but uneven
- Growth clusters and large urban areas will outpace their rural counterparts
- Growth strategies must be inclusive and sustainable

THANK **Y**OU!

Merry Christmas!

Made with  by 