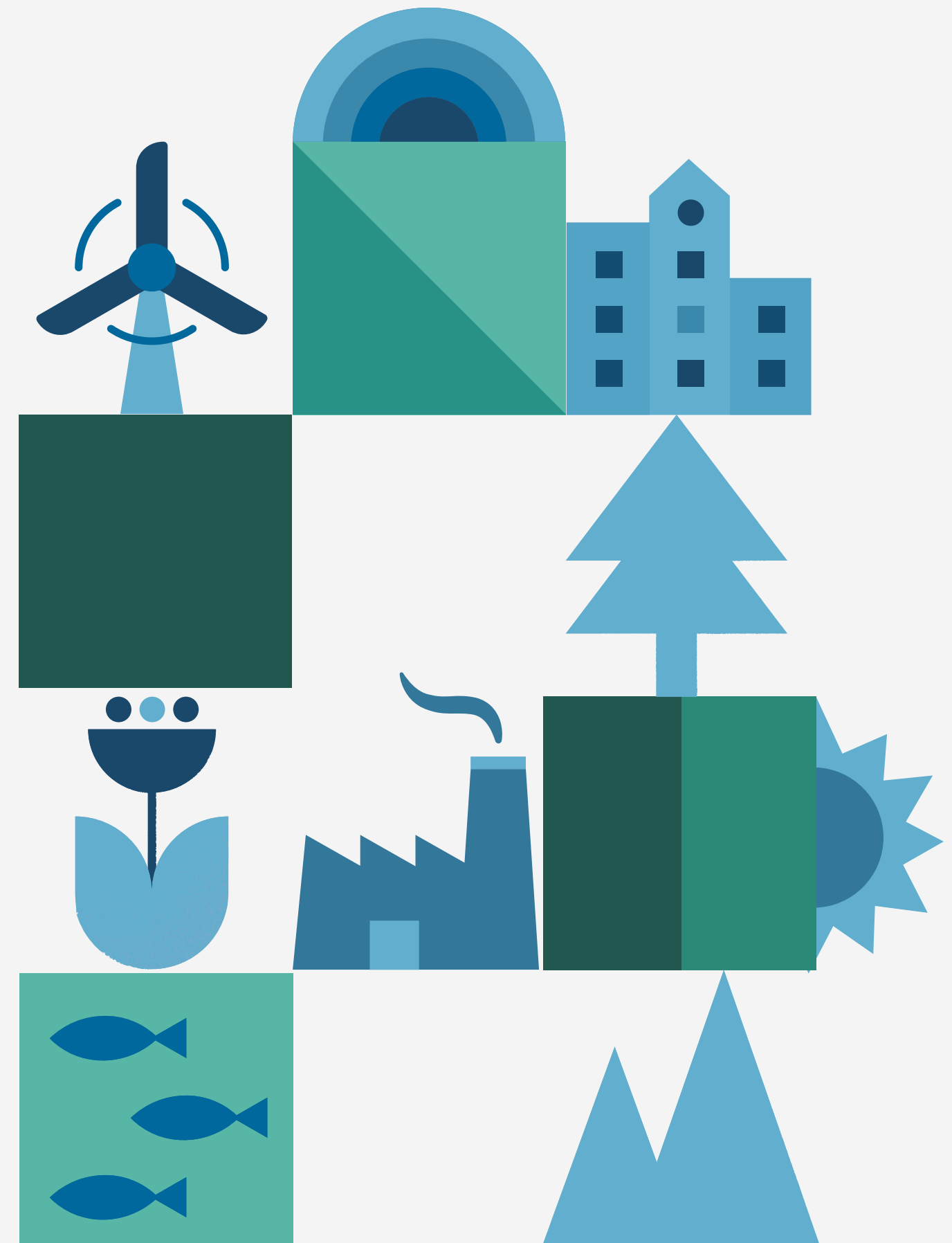




AJARN JANUAR HAKIM

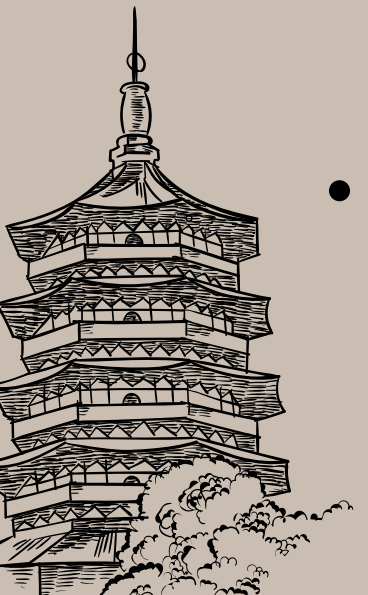
WHY INDIAN PEOPLE ARE SUFFERING?

A report about factors affecting poor life quality of indian people



Background

- India is a country in South Asia. It is the seventh-largest country and the second-most populated country in the world. In terms of economy, India is the world's fifth-largest economy by nominal GDP and the third-largest by purchasing power parity (PPP).
- with a population of over 1.3 billion people. This has led to the rapid growth of cities and towns, leading to overcrowding and a lack of affordable housing. The rapid growth of industries and businesses in urban areas has also contributed to overcrowding



- The caste system in India is a social hierarchy that has been in place for centuries and is a source of social inequality, discrimination, and oppression. It divides people into different social groups or castes based on their birth, and each caste is associated with a particular occupation and status in society.
- Poverty in India is a complex issue that involves a combination of social, cultural, and economic factors.



Key issues

Poverty

India is one of the poorest countries in the world. Which will lead to...

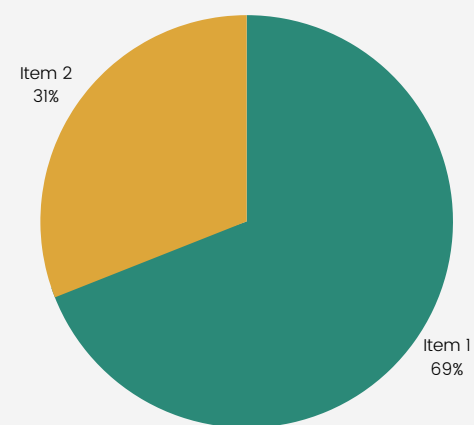
- Lack of basic necessities
- Lack of access to education
- Other issues

The root cause?

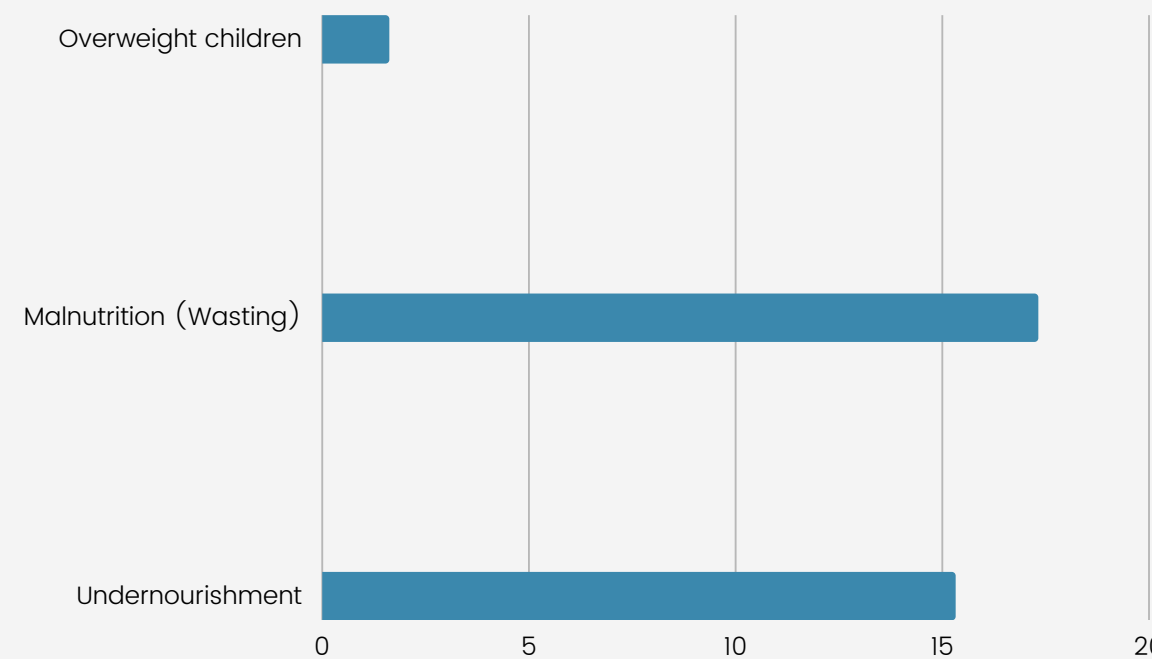
- Lack of financial savings
- Rapid population growth

Crucial stakeholders

- Weaker member of Indian society



69 percent of Indian household struggling with the financial instability



(Source: SDG indicator in 2018)

Poverty will influence other issues. People below the poverty line will have a higher tendency to have less access to education and healthcare, malnutrition, higher child labor, and child marriage.

We can see that there are more than 8 times chance of children in India to be underweight than overweight

Poor healthcare

- Access to healthcare is limited
- The quality is poor
- Many people cannot afford healthcare
- Shortage of professionals
- Asymmetric access
- Poor UHC

2.4 M people die with curable conditions



Deaths due to non-utilization of healthcare services is only **838,473**. Meanwhile, deaths due to poor quality of healthcare is **1,599,870** cases



Fun fact : Poor quality healthcare causes death rate more than no healthcare at all

Lack of access to education

- Leads to poor learning outcomes
- Push children out of the system
- vulnerable to child labor problem
- Lack of incentives from teacher?

The gap between rural areas and urban areas are too big. **Rajasthan, Madhya Pradesh, Uttar Pradesh, Chhattisgarh, Jharkhand, Bihar, Odisha, and Andhra Pradesh** are examples of states that have low learning scores



Although the enrolment is high, the efficiency is low (**60 percent of children in rural areas were not literate**)

Environment degradation and how it actually harms Indian

- Air, water pollution, Soil erosion
- Deforestation and waste
- Leads to biodiversity loss



Air pollution

63 of the 100 most polluted towns in the world are in India. Which might cause

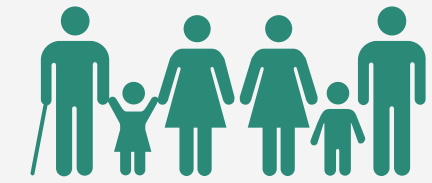
- Issue to long-term health
- Higher tendency to diagnose with lung and cardiovascular diseases
- Poorer respiratory system



Water

70 percent of surface water in India is estimated to be unfit for consumption and India people relies a lot on the river on a daily basis.

- Cholera, typhoid, and hepatitis
- Harm crops due to infectious bacteria



Indirect effects

- Overflow of waste
- Biodiversity loss

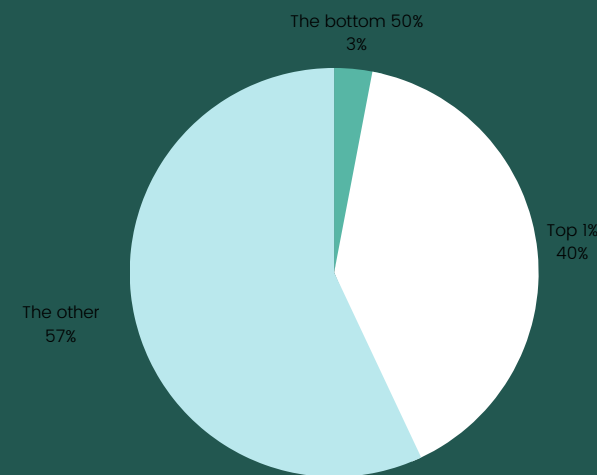


Rajasthan

Taxing issues and social inequality

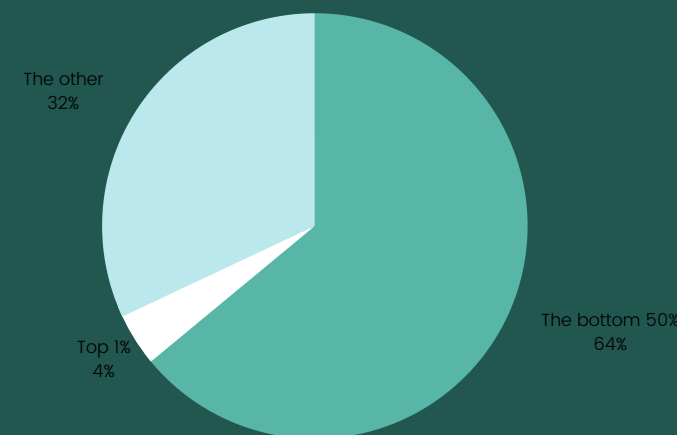
Progressive tax might be one of the causes of social inequality, apart of an obvious problem, like caste system.

- Discrimination on basis gender
- Caste system and religion
- Limited opportunities and access through resouces across different groups
- Marginalized group



This is where the wealth produced from 2012 to 2021 in India goes, 40 % to the top 1% people and just 3% to the bottom half. However, the progressive tax is not appropriate for this proportion...

64% of total G and S tax in the country came from the bottom half. Meanwhile, only 4% from top 10%



Rapid population growth

- Fastest-growing populations in the world
- Leads to overcrowding
- Indequate housing
- Limited access to basic services
- Strain on resources

Policies



National Rural Livelihood Mission

The Deendayal Antyodaya Yojana National Urban Livelihoods Mission

The Pradhan Mantri Jan Dhan Yojana

- The Pradhan Mantri Jan Dhan Yojana (PMJDY) was launched in August 2014 by Prime Minister Narendra Modi.



Saansad Aadarsh Gram Yojana

- SAGY launched by PM Modi in October 2014 to address poverty in India.
- It is a government initiative for social and cultural development of villages.



The National Clean Energy Fund (2010)

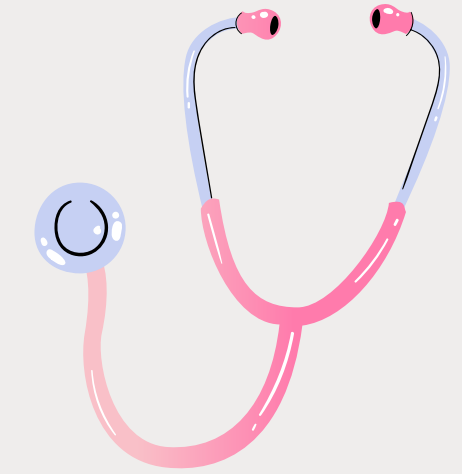
India

- Promote the development and deployment of renewable energy technologies
- Energy efficiency measures
- Low-carbon technologies to reduce the country's dependence on fossil fuels and curb greenhouse gas emissions.



Policies of poor health care

- Swachh Bharat Abhiyan not only solves the poor healthcare problem, but also helps with the environmental degradation problem by improving the quality of freshwater and sanitation
- Ayushman Bharat is a government-sponsored health insurance scheme launched in 2018 in India.



“Mahatma Gandhi National Rural Employment Guarantee Act (2005)”

How it works

To guarantees adult members of rural households who want to work and are ready to do unskilled physical labor a hundred days of wage employment in a fiscal year

The Indian government population control policy expanded

- Delivering contraceptives to beneficiaries' homes
- Counseling newly married couples to delay birth by two years
- Delay birth by three years after the birth of the first child
- Compensating for sterilization.



“The Eleventh Five Year Plan time (2007–2012)”

Objective : Decrease total fertility to 2.1% by 2012

to achieve the objective

- Broaden family contraceptive options
- Better social marketing
- Increase male participation
- Strengthen the role of mass media in behavioral change
- Disseminate contraceptives through satisfied users

India's ten-year increase rate :

1991–2001 : 21.5%

2001–2011 : 17%



Lesson learned From The case of India



The causes of India's poor standard of living cannot be described by a single major issue because there are several issues that overlap at the moment.

Not all the problems can be fixed right away and the problem that is linked to most other issues is poverty."

The policy duty is to support employment and let them survive and live by themselves

The policy provides like NRLM, As well as what The Deendayal Antyodaya Yojana-National Urban Livelihoods Mission (DAY-NULM)

There is the probability that the issues that occur nowadays in India will be reduced since they have the capital to protect themselves