

# ADDING GOOGLE MAPS INTO QGIS

---

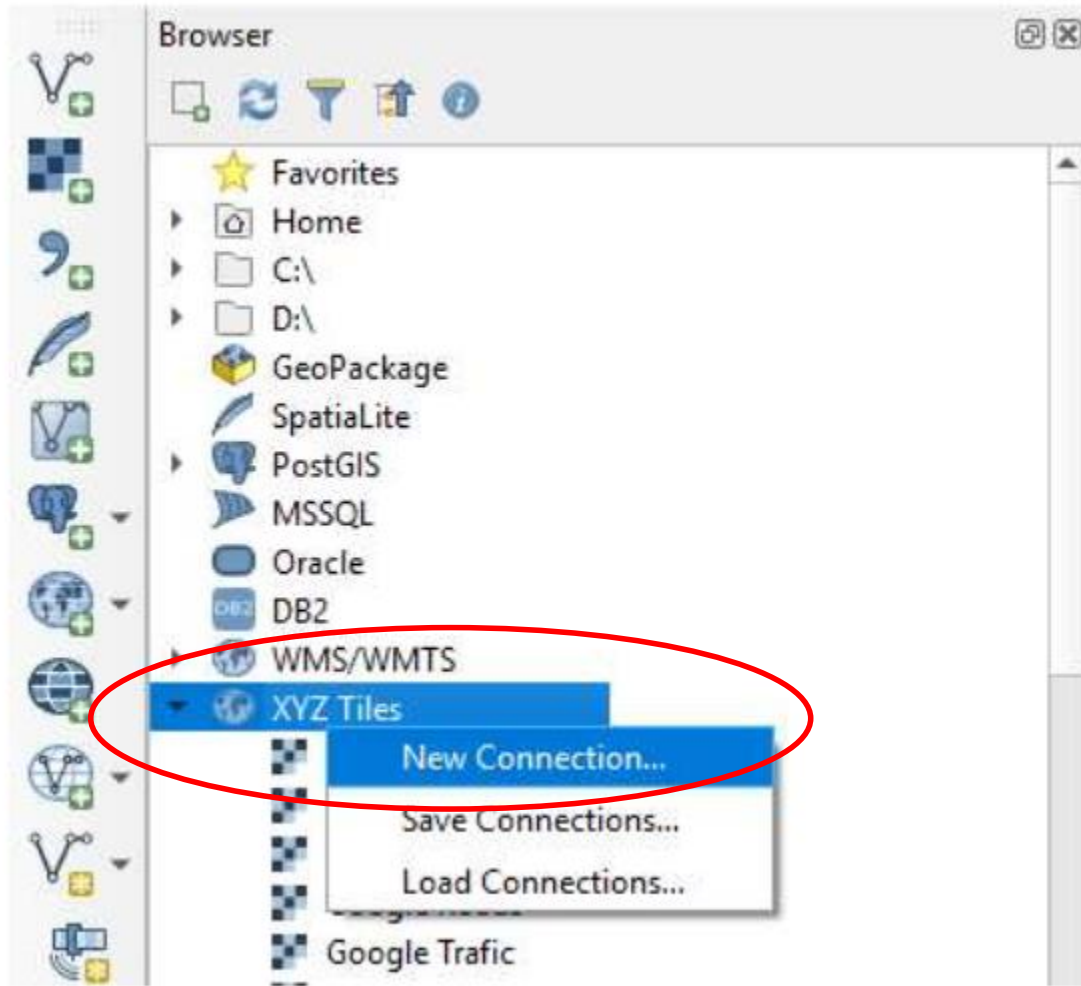
EE464: Urban Economics

EE562: Selected Topics in Development Economics 2

Semester 1 / 2020

Faculty of Economics, Thammasat University

# Step 1



# Step 2

Name = *Google Maps*

URL = *https://mt1.google.com/vt/lyrs=r&x={x}&y={y}&z={z}*

Min Max Zoom level = *0 - 19*

XYZ Connection

Connection details

Name: Google Maps

URL: https://mt1.google.com/vt/lyrs=r&x={x}&y={y}&z={z}

Authentication

Configurations: Basic

Choose or create an authentication configuration

No authentication

Configurations store encrypted credentials in the QGIS authentication database.

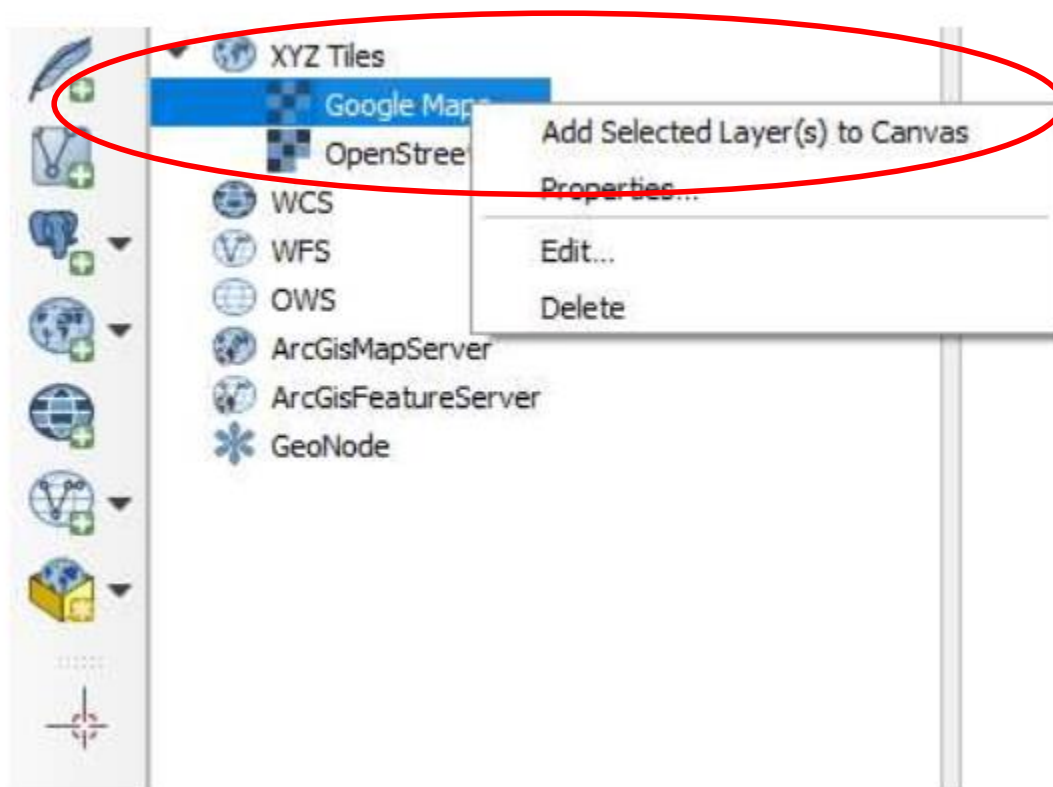
Min. Zoom Level: 0

Max. Zoom Level: 19

Referer:

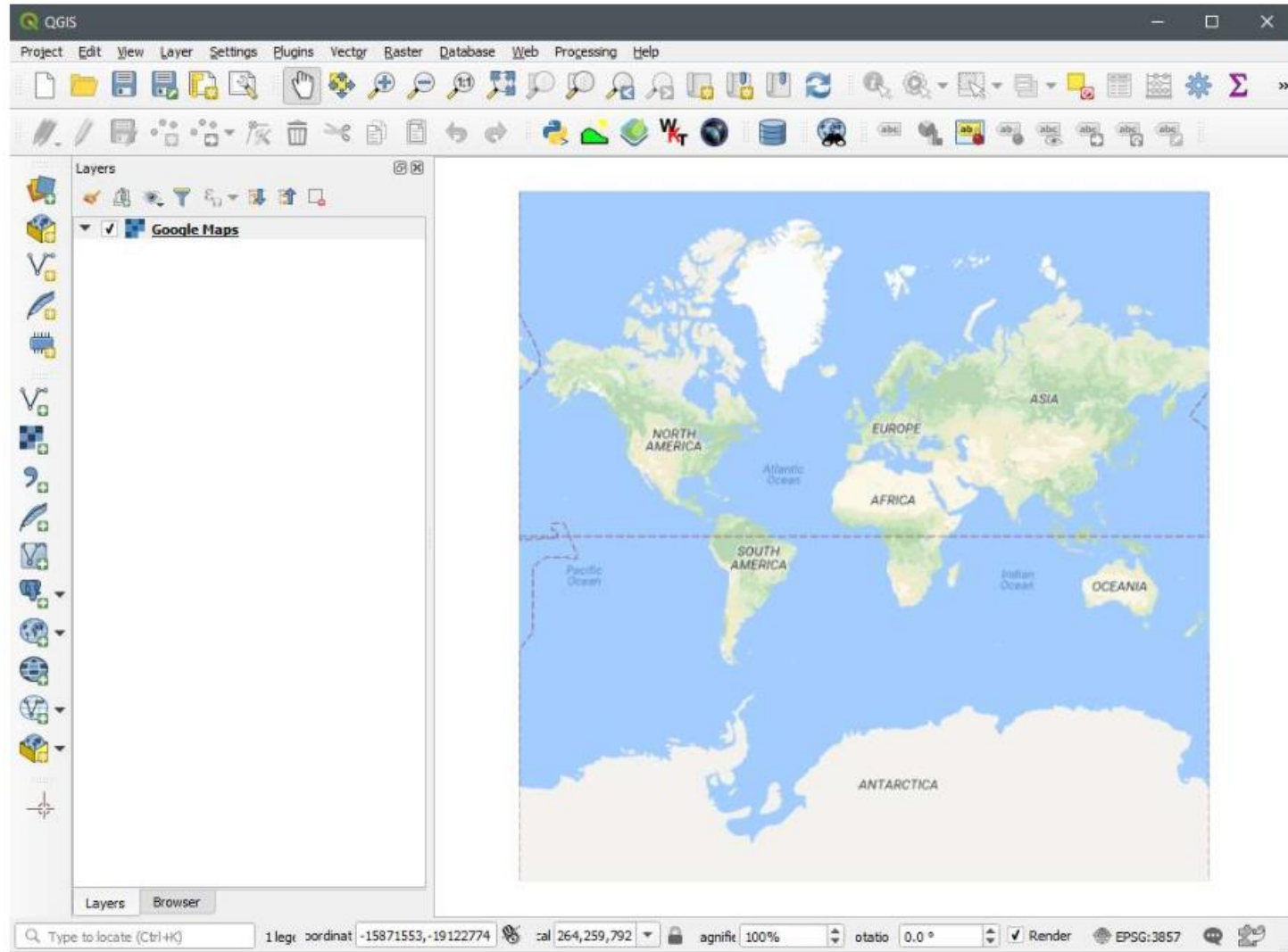
OK Cancel

# Step 3



Source: <https://medium.com/mapedia/how-to-add-google-maps-layer-qgis-3-5e67039a1773>

# Step 4



Source: <https://medium.com/mapedia/how-to-add-google-maps-layer-qgis-3-5e67039a1773>

# Collections of Base Maps

## OpenStreetMap:

<http://tile.openstreetmap.org/{z}/{x}/{y}.png>

## Google Maps:

<https://mt1.google.com/vt/lyrs=r&x={x}&y={y}&z={z}>

## Google Roads:

<https://mt1.google.com/vt/lyrs=h&x={x}&y={y}&z={z}>

## Google Satellite:

<https://mt1.google.com/vt/lyrs=s&x={x}&y={y}&z={z}>

## Google Hybrid:

<https://mt1.google.com/vt/lyrs=y&x={x}&y={y}&z={z}>

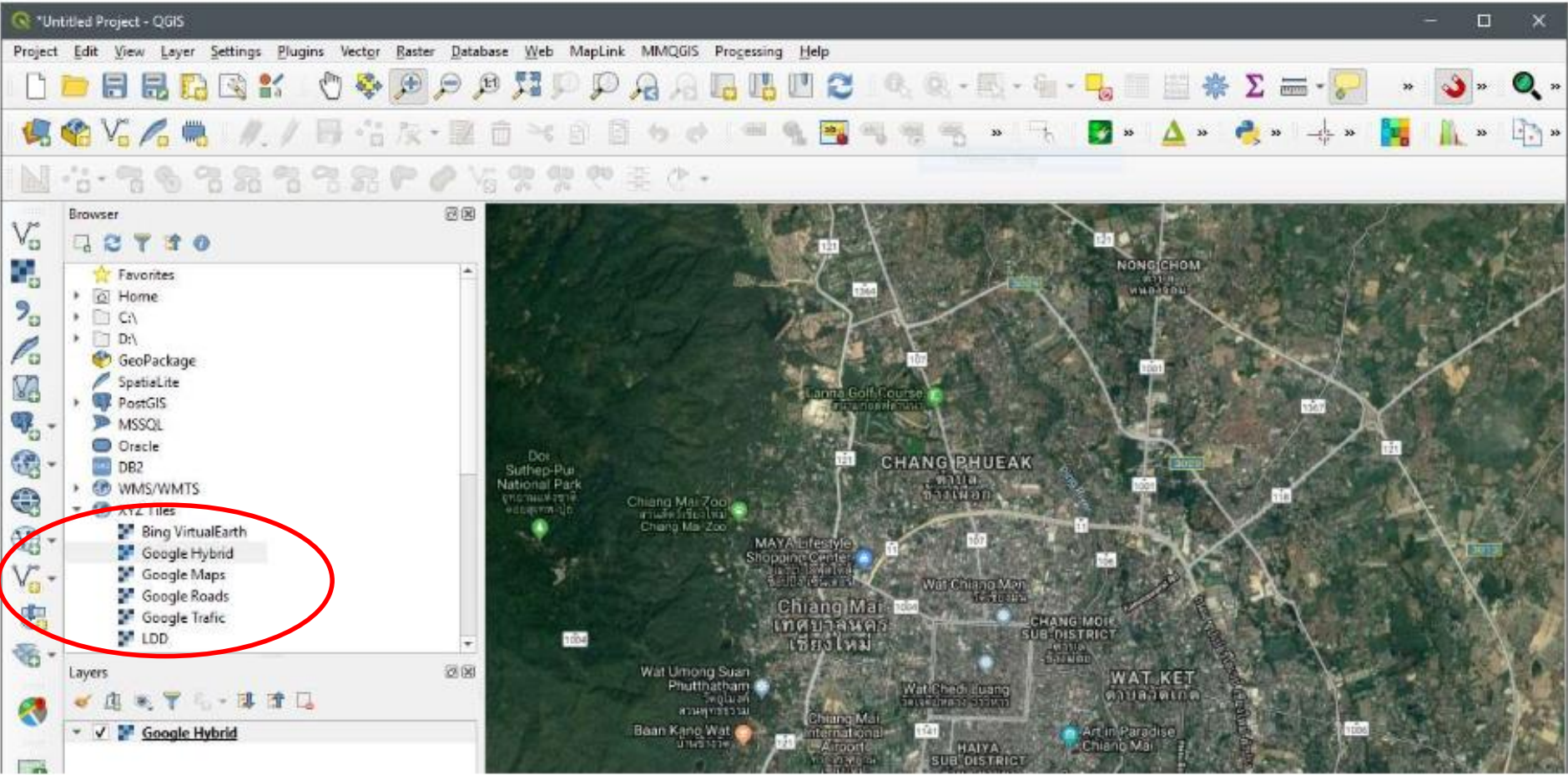
## Google Terrain:

<https://mt1.google.com/vt/lyrs=t&x={x}&y={y}&z={z}>

## Google Traffic:

<https://mt1.google.com/vt/lyrs=m@221097413,traffic&x={x}&y={y}&z={z}>

Source: <https://medium.com/mapedia/how-to-add-google-maps-layer-qgis-3-5e67039a1773>



Source: <https://medium.com/mapedia/how-to-add-google-maps-layer-qgis-3-5e67039a1773>