

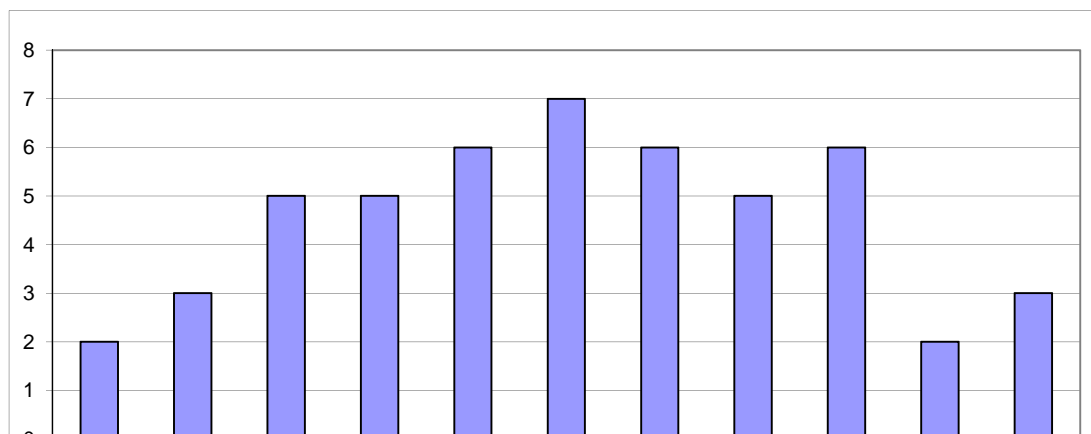


NO.	Student I.D.	M1 (15)	M2 (10)	M3 (15)	M4 (10)	M5 (1)	M6 (10)	M7 (10)	Midterm (80)	Adj Midterm (40)	%	Note
1	5604640200	5	6.5	14	6	6	10	7	54.5	27.3	68.1	
2	5604640580	8	9.5	13	9	6	9	3	57.5	28.8	71.9	
3	5604640655	4	7.5	12.5	8	7	5	6	50.0	25.0	62.5	
4	5604640762	11	6.5	13	7	4.5	5	0	47.0	23.5	58.8	
5	5604641059	5.5	6	13	8	5	8	7	52.5	26.3	65.6	
6	5604641240	5.5	6	2	5.5	6	2	2	29.0	14.5	36.3	*
7	5604641752	7	7	7.5	8.5	8	8.5	9	55.5	27.8	69.4	
8	5604641778	8	7.5	11	8	7	9	9	59.5	29.8	74.4	
9	5604641810	7.5	4	11.5	2	7	7	5.5	44.5	22.3	55.6	
10	5604642099	7.5	3	7	8	2	0	4	31.5	15.8	39.4	
11	5604642172	7.5	3.5	9.5	7.5	7	0	0	35.0	17.5	43.8	
12	5704640050	8	7	14	8	9	9	7.5	62.5	31.3	78.1	
13	5704640100	15	8.5	11	5	10	10	7.5	67.0	33.5	83.8	2
14	5704640159	5	7	6	4	6	4	8	40.0	20.0	50.0	
15	5704640225	3	9.5	11	8.5	4	6	7	49.0	24.5	61.3	
16	5704640340	6	9.5	13	10	8	10	10	66.5	33.3	83.1	3
17	5704640647	3.5	5	11	8	4	4	7	42.5	21.3	53.1	
18	5704640662	9	3	0	8	10	10	9	49.0	24.5	61.3	
19	5704640837	2	5	8	5	6	0	6	32.0	16.0	40.0	
20	5704640886	7.5	3	6	5.5	5	2	6	35.0	17.5	43.8	
21	5704641041	7.5	9.5	13	7.5	4.5	9	6.5	57.5	28.8	71.9	
22	5704641157	6	7.5	13	6	9	10	7	58.5	29.3	73.1	
23	5704641165	5	7.5	11	5	8	9	5.5	51.0	25.5	63.8	
24	5704641322	3	9.5	10	10	3	0	0	35.5	17.8	44.4	
25	5704641330	5	4.5	10	5	2.5	9	3.5	39.5	19.8	49.4	
26	5704641405	6	0	7	5.5	5	6	7	36.5	18.3	45.6	
27	5704641660	1	4	13	5	10	9.5	9.5	52.0	26.0	65.0	
28	5704641702	9	8.5	12.5	6	7	10	8	61.0	30.5	76.3	
29	5704641769	8	8.5	13	5	4	9.5	9	57.0	28.5	71.3	
30	5704641801	4	4.5	10	5	3	4	6.5	37.0	18.5	46.3	
31	5704641819	8	9	13	7	6	9.5	6	58.5	29.3	73.1	
32	5704641843	7	7.5	3	6	6.5	5	6	41.0	20.5	51.3	



NO.	Student I.D.	M1 (15)	M2 (10)	M3 (15)	M4 (10)	M5 (1)	M6 (10)	M7 (10)	Midterm (80)	Adj Midterm (40)	%	Note
33	5704641850	7	6.5	8	6	2	3	8	40.5	20.3	50.6	
34	5704641934	8	5.5	13	6	4	4.5	10	51.0	25.5	63.8	
35	5704641942	5	5.5	10	6	8	2	8	44.5	22.3	55.6	
36	5704642072	2	5	7	6	5	3	0	28.0	14.0	35.0	*
37	5704642163	15	9	14	6.5	10	9	4.5	68.0	34.0	85.0	1
38	5704642171	11	7	0	5	8.5	6	7	44.5	22.3	55.6	
39	5704642189	3	0	0	6	10	0	8.5	27.5	13.8	34.4	*
40	5704642205	7	6.5	13	5.5	10	5	7.5	54.5	27.3	68.1	
41	5704642213	6	6	9	5.5	4	7.5	8	46.0	23.0	57.5	
42	5704642239	2	6.5	10	1	8.5	3	5	36.0	18.0	45.0	
43	5704642262	2	3	9	3	3	5	7	32.0	16.0	40.0	
44	5704642270	8	5	9	3	2.5	10	7	44.5	22.3	55.6	
45	5704642312	7	6	9	4.5	5	5	5	41.5	20.8	51.9	
46	5704642486	5	6	11	5.5	3	9.5	7.5	47.5	23.8	59.4	
47	5704642544	5	2	7	4	2	3	4	27.0	13.5	33.8	*
48	5704642668	4	6	9	6	8	5	5	43.0	21.5	53.8	
49	5704642684	5	6	10	5	2.5	10	10	48.5	24.3	60.6	
50	5704642734	5	5	12	3.5	3	4	7	39.5	19.8	49.4	

Max	15	9.5	14	10	10	10	10	10	68	34	85
Average	6.2	6.0	9.7	6.0	5.9	6.1	6.3	6.3	46.2	23.1	57.7
Min	1	0	0	1	2	0	0	0	27	13.5	33.8
S.D.	2.9	2.3	3.7	1.9	2.5	3.3	2.6	2.6	11.0	5.5	13.7





B.E. International Program

EE311 MICROECONOMICS THEORY Section 046401

Assoc. Prof. Dr. Chayun Tantivasadakark

NO.	Student I.D.	M1 (15)	M2 (10)	M3 (15)	M4 (10)	M5 (1)	M6 (10)	M7 (10)	Midterm (80)	Adj Midterm (40)	%	Note
	30-35	35-40	40-45	45-50	50-55	55-60	60-65	65-70	70-75	75-80	80-85	

X+1.5SD	78.3
X+1.25SD	74.9
X+SD	71.4
X	57.7
X-SD	44.0
X-1.25SD	40.6
X-1.5SD	37.2