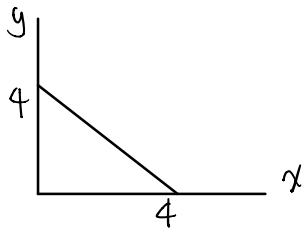


6304 640342

① Farmer C

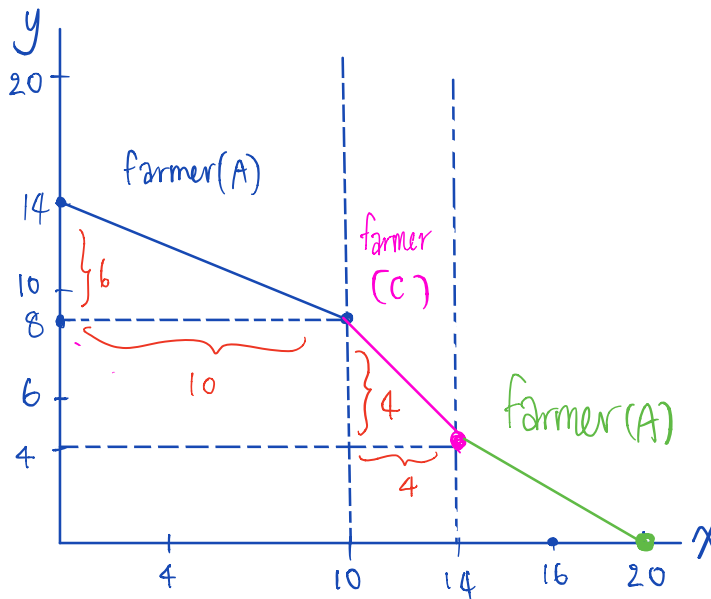


Combine these 3 farmers and draw the PPC
 cost of $x = 1$ of y

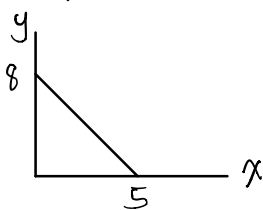
Farmer A: cost of $x = 0.6$ of y

Farmer B: cost of $x = 1.33$ of y

x	y
0	14
1	13.4
2	12.8
⋮	⋮
10	8
11	7
⋮	⋮
14	4
15	2.67
16	1.34
⋮	⋮
20	0



② If the technology of producing x improves so much that the amount of x we have double at all quantities of y . How will the PPC below change?



cost of x is higher?
 cost of y is higher?

- the cost of x will be higher at any unit of y
- the cost of y will be lower for any unit of x

