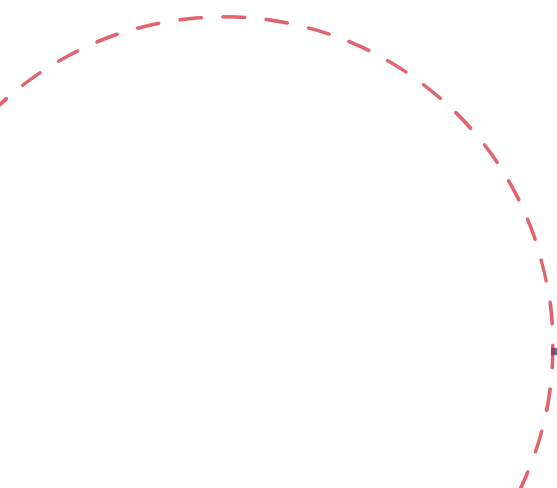




UNITED KINGDOM'S INEQUALITY ARISING

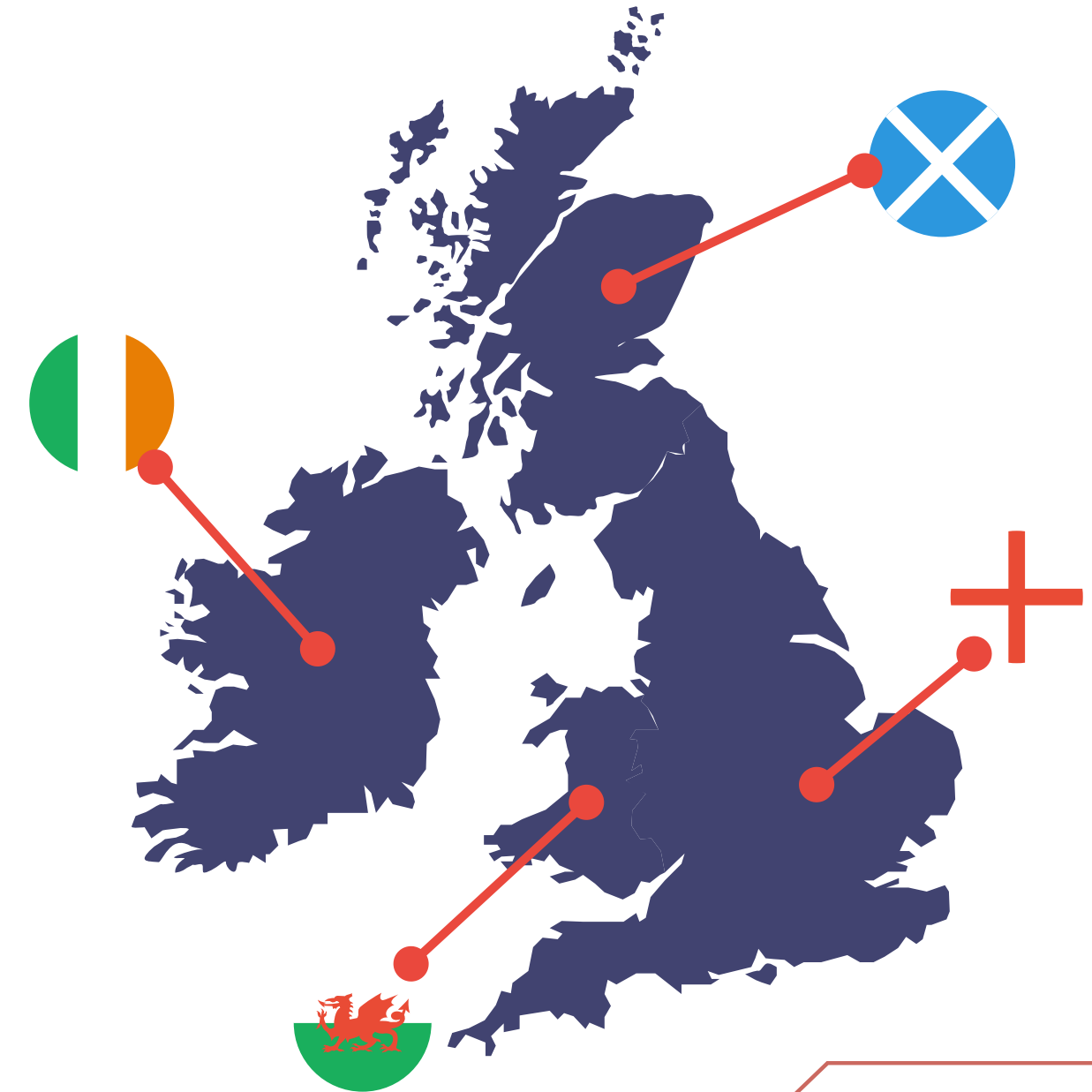
During Covid-19 Situation



United Kingdom Overview



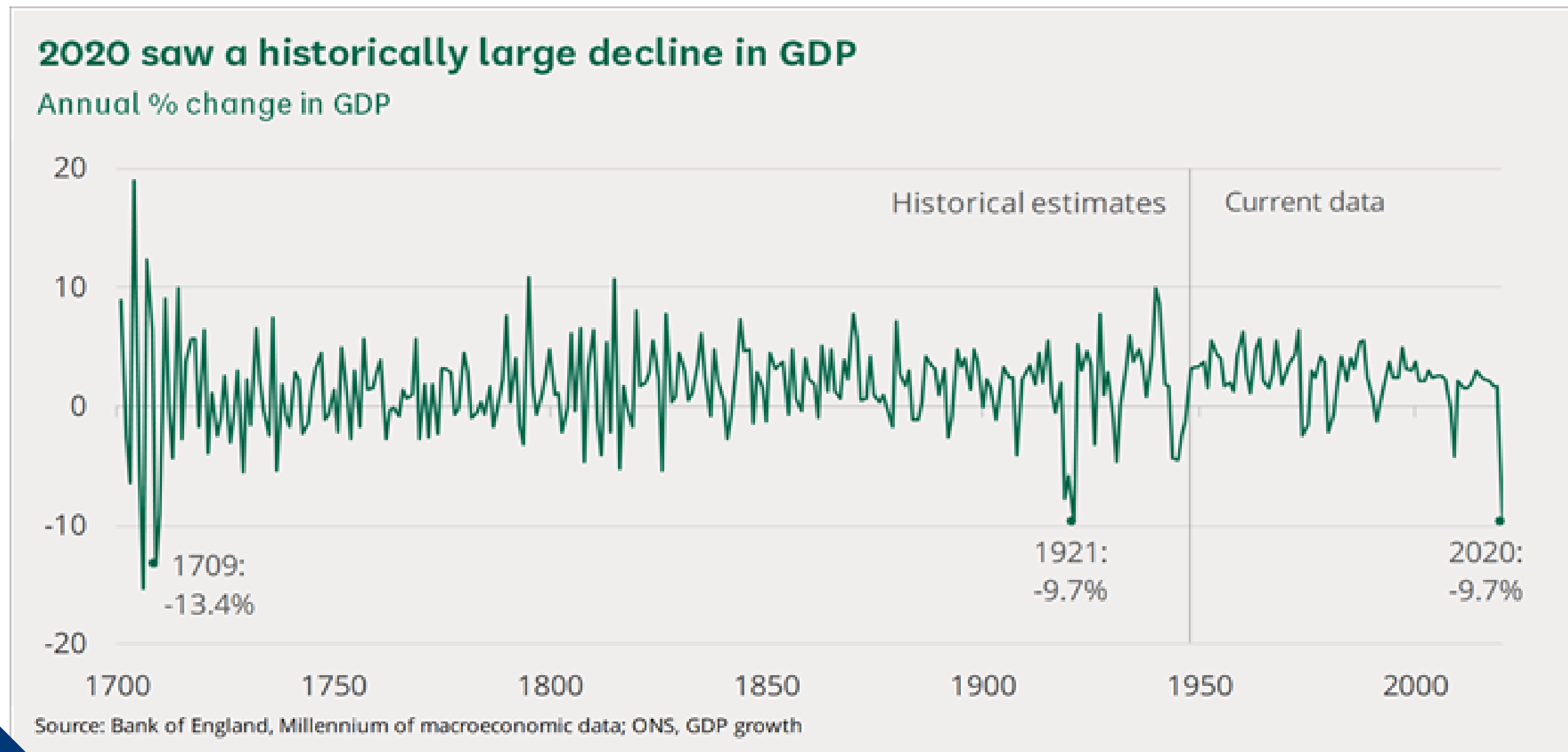
Brief History



United Kingdom Overview



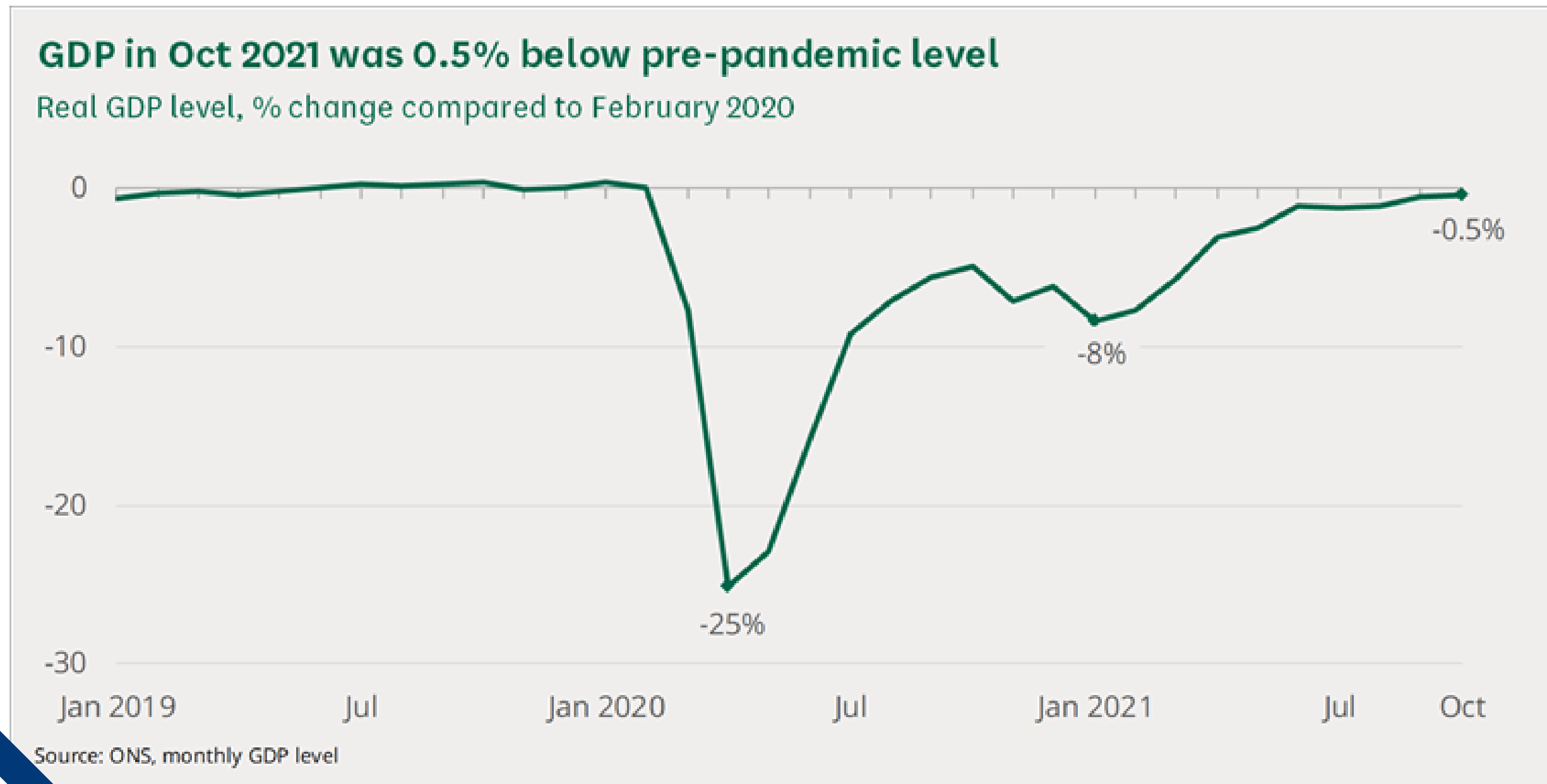
2020 saw a historically large decline in GDP



United Kingdom Overview



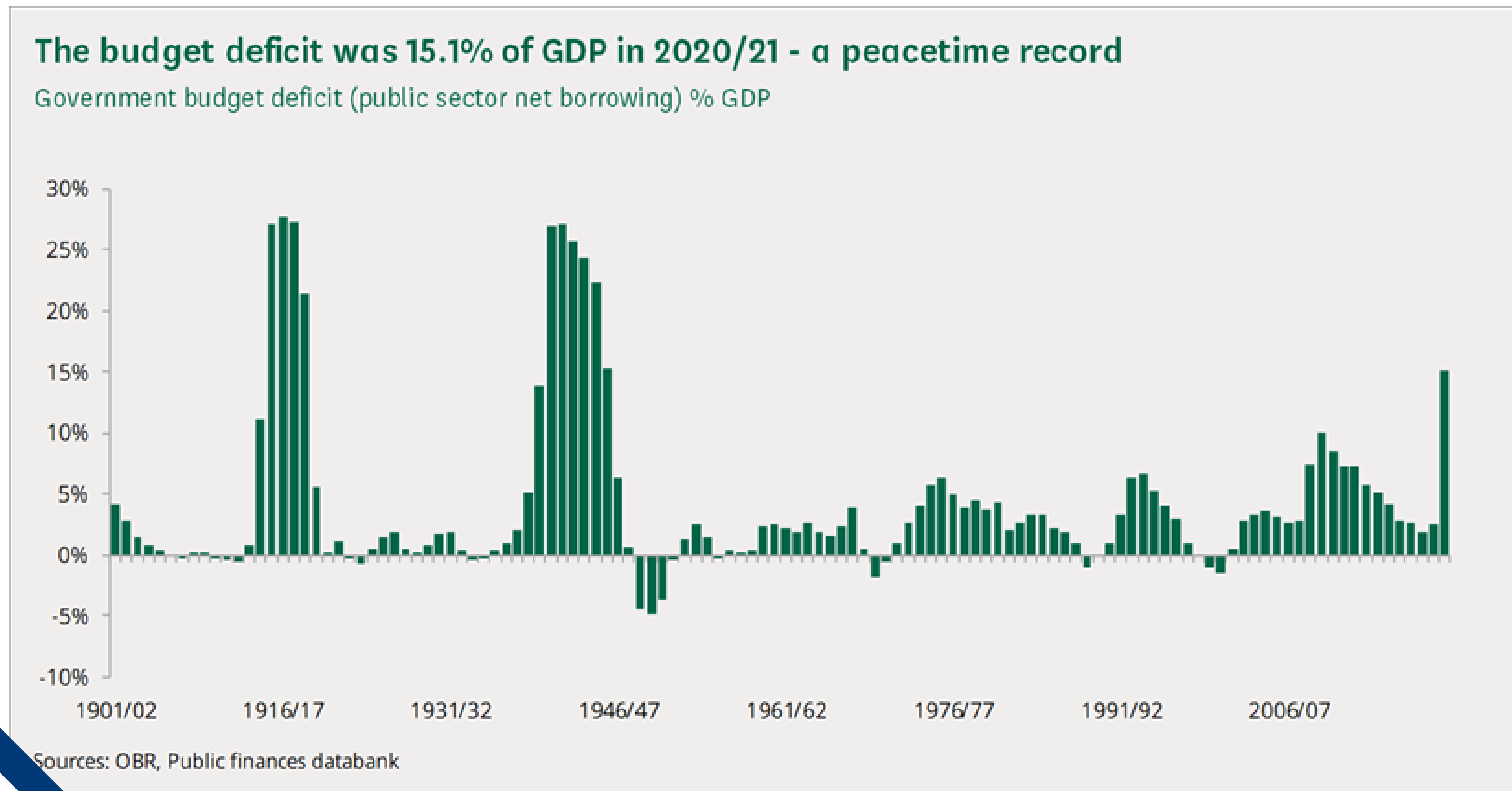
Real GDP level, % change compared to February 2020



United Kingdom Overview



Government budget deficit % GDP



Key issues and challenges

01 Healthcare Inequality

02 Income Inequality

03 Education Inequality

Income inequality

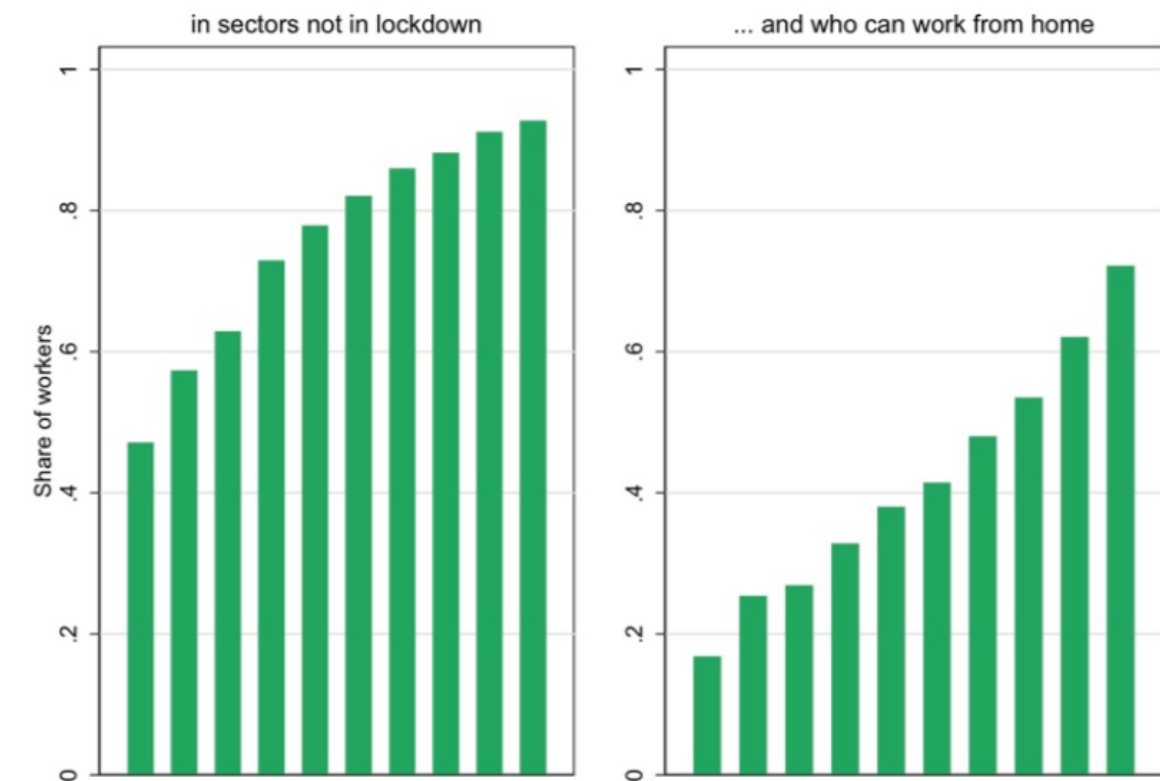
Unemployment rate

- Lock-down policy is likely to increase the income gap between the low-paid labor as they are likely to work in hand-hit sectors and they are incapable of working from home

Technological Shift

- The labor force located in higher educated worker levels whose jobs are more capable of working from home will be more demanded in the labor market

Figure 3 Share of workers in sector not in lockdown and who can work from home, excluding key worker, by declining earning distribution



Source: Analysis of Labor force survey data (2019)

Education Inequality

School closure



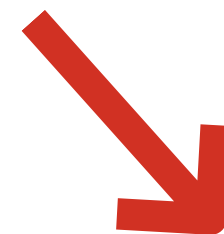
Remotely learning



Teacher's skills

Not having a quiet place

Lack of ICT resources



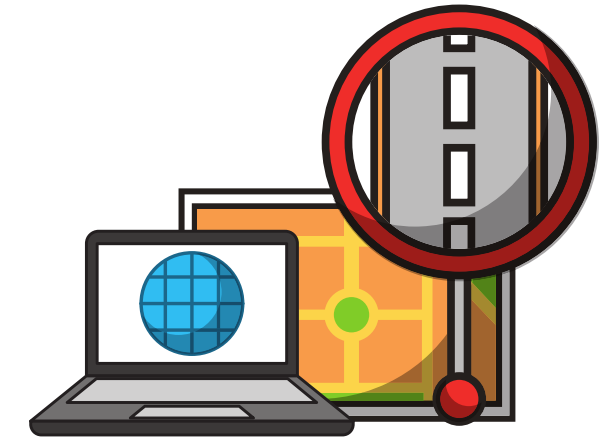
Human Capital Declining



Education Inequality

ICT resources and cognitive outcomes

- The lack of ICT resources and a proper place for remote learning are negatively correlated with cognitive outcomes .
- The lack of an internet connection matters especially in The United kingdom.
- Not having a quiet place to study at home is correlated with cognitive losses in United Kingdom



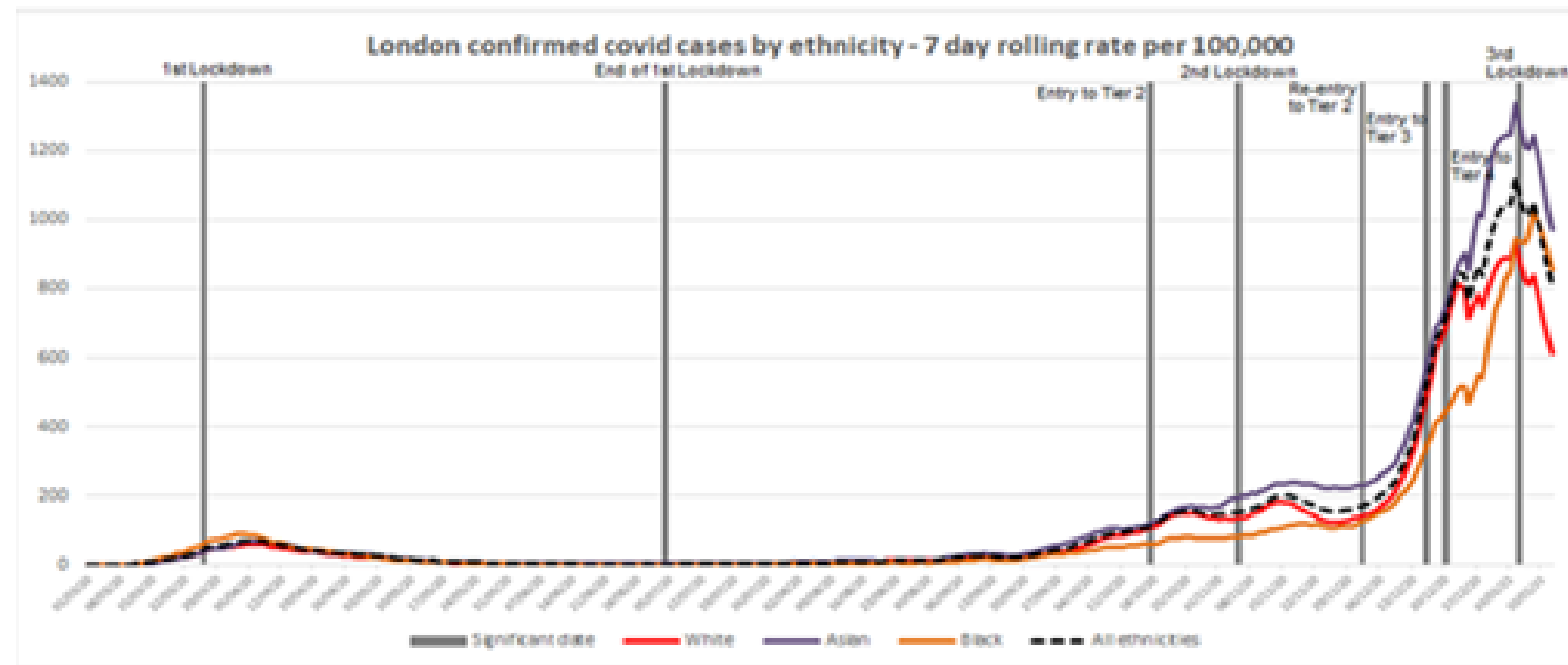
Chances of dropping out school

- Cognitive losses can be reversed when students back to school and they found not being able to attend remote learning significantly increases the chances of dropping out of school or ending education early.



Healthcare inequality

Case rate and ethnicity



Health inequality associated with ethnicity and race

The cause of this may come from various aspects; minor ethnicity, low income, and deprivation are usually associated with the risk of infection from Covid-19 as BAME often lived in the most deprived area and tended to live in a more crowded house than the whites

The death case

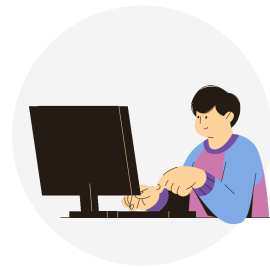
BAME groups have significantly higher cases and deaths than white ethnicity

Policies and recommendations



Healthcare inequality Policies

- Increase the spending on Health sector
- Organization that inquiries about the disproportionate number of people receiving treatment and medication.



Education inequality Policies

- Focus on school with low ICT resource and high grade repetition
- Every students must have proper devices..



Income inequality policies

- Increase hiring unit without crowding out private firm
- Better benefit system to unemployed worker such as income insurance

Conclusion

Key issues

- Covid-19 creates an immense negative effect on various aspects; not only developing countries that have faced these issues but also developed countries have faced the same situation. The key issues that created severe impact to the United Kingdom faced during Covid-19 are healthcare, education, and income inequalities

Lesson Learned

- Government and private sectors have to intervene to collaboratively cope with these problems urgently to stop or palliate the damage which can create negative inequalities gap in the long-run

Team members

Pattarit Yamploy	6104640393
Ti Sakornvasee	6104640658
Akkadej Chaopanyawej	6104640856
Nithiroj Tanyaset	6104641144