



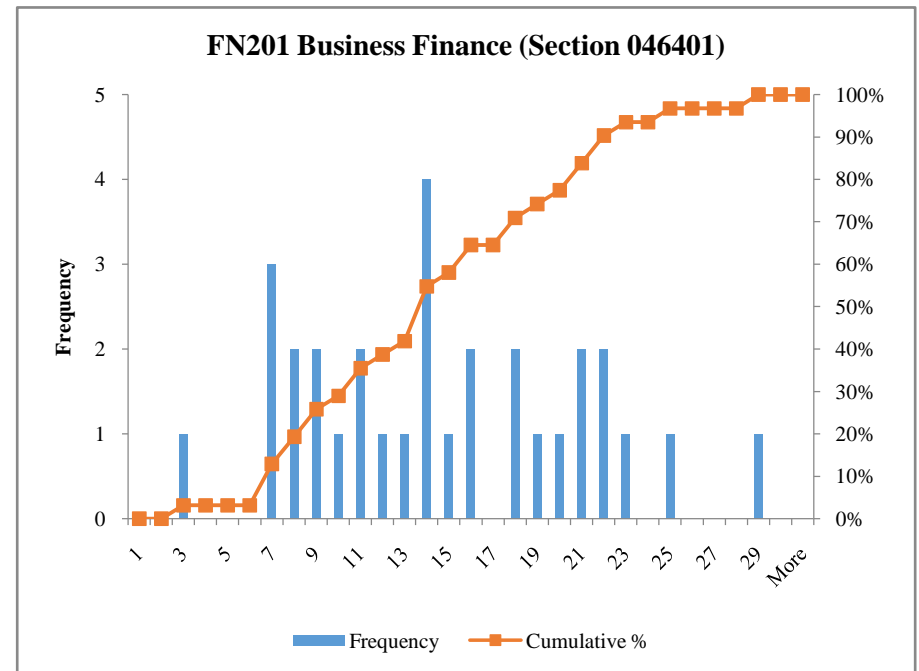
### Midterm Score

Semester 1/2013 (August 13 - December 20, 2013) (After add and drop)  
 Subject: FN201 Business Finance (Section 046401)  
 Instructor: Dr. WinaiHomsombat  
 Date & Time: Saturday, 9.00-12.00 hrs.  
 Venue: Room 303, Faculty of Economics

NO.	Student I.D.	Score
1	5504640102	7.875
2	5504640136	20.250
3	5504640151	28.125
4	5504640169	12.150
5	5504640235	10.800
6	5504640490	14.850
7	5504640524	24.525
8	5504640540	8.325
9	5504640615	10.350
10	5504640672	20.025
11	5504640771	21.375
12	5504640797	21.150
13	5504640813	6.975
14	5504640821	15.975
15	5504640870	8.775
16	5504640920	18.900

NO.	Student I.D.	Score
17	5504640938	22.725
18	5504641001	2.925
19	5504641084	17.775
20	5504641209	13.950
21	5504641373	11.925
22	5504641597	9.225
23	5504641613	13.725
24	5504641647	13.950
25	5504641654	6.525
26	5504641696	7.650
27	5504641910	6.075
28	5504641977	17.550
29	5504642074	13.725
30	5504642140	15.975
31	5604930213	19.125

Max 28.125  
 Min 2.925  
 Mean 14.30  
 SD 6.14



## Midterm Score

Semester 1/2013 (August 13 - December 20, 2013) (After add and drop)  
 Subject: FN201 Business Finance (Section 046402)  
 Instructor: Dr. WinaiHomsombat  
 Date & Time: Saturday, 13.00-16.00 hrs.  
 Venue: Room 303, Faculty of Economics



NO.	Student I.D.	Score	NO.	Student I.D.	Score	NO.	Student I.D.	Score
1	5404640285	19.575	17	5504640714	26.325	33	5504641621	22.275
2	5504640029	15.075	18	5504640862	13.500	34	5504641639	11.475
3	5504640086	5.175	19	5504640979	17.325	35	5504641670	15.750
4	5504640227	19.575	20	5504640987	20.925	36	5504641852	25.875
5	5504640243	13.950	21	5504641035	13.275	37	5504641936	17.325
6	5504640276	20.025	22	5504641126	-	38	5504642025	21.375
7	5504640318	18.225	23	5504641191	24.075	39	5504642041	9.900
8	5504640342	14.850	24	5504641241	4.275	40	5504642066	20.475
9	5504640367	15.300	25	5504641290	18.900	41	5504642082	21.150
10	5504640383	16.875	26	5504641308	9.675			
11	5504640409	17.100	27	5504641324	21.150			
12	5504640417	-	28	5504641357	25.200			
13	5504640466	21.600	29	5504641464	18.450			
14	5504640516	18.900	30	5504641472	18.450			
15	5504640599	13.950	31	5504641530	23.850			
16	5504640607	12.150	32	5504641605	21.375			

Max 26.33  
 Min 4.28  
 Mean 17.56  
 SD 5.18

