

HW#6 Due Feb 10, 2022

From Problem and Applications of Mankiw book, Chapter 4 The Market Forces of Supply and Demand

#1 Answer only part (b) and (e). Follow the instruction of the question and, in addition, describe the market mechanism that causes the change in the market equilibrium.

3. Consider the market for minivans. For each of the events listed here, identify which of the determinants of demand or supply are affected. Also indicate whether demand or supply increases or decreases. Then draw a diagram to show the effect on the price and quantity of minivans.

~~a. People decide to have more children.~~

b. A strike by steelworkers raises steel prices.

~~c. Engineers develop new automated machinery for the production of minivans.~~

~~d. The price of sports utility vehicles rises.~~

e. A stock market crash lowers people's wealth.

#2

11. Suppose that the price of basketball tickets at your college is determined by market forces. Currently, the demand and supply schedules are as follows:

Price	Quantity Demanded	Quantity Supplied
\$4	10,000 tickets	8,000 tickets
8	8,000	8,000
12	6,000	8,000
16	4,000	8,000
20	2,000	8,000

a. Draw the demand and supply curves. What is unusual about this supply curve? Why might this be true?

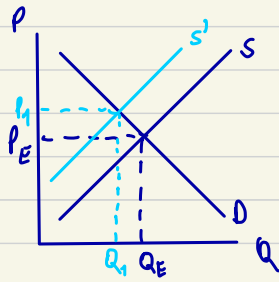
b. What are the equilibrium price and quantity of tickets?

c. Your college plans to increase total enrollment next year by 5,000 students. The additional students will have the following demand schedule:

Price	Quantity Demanded
\$4	4,000 tickets
8	3,000
12	2,000
16	1,000
20	0

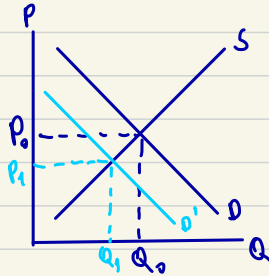
Now add the old demand schedule and the demand schedule for the new students to calculate the new demand schedule for the entire college. What will be the new equilibrium price and quantity?

③ b) a strike by steelworkers raises steel price



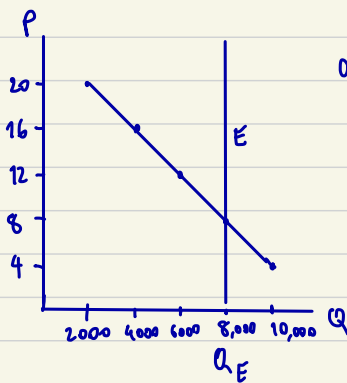
- because of increasing in steel price, the supply of market is decrease
- supply shift left from S to S'
- price increases from P_E to P_1
- quantity decrease from Q_E to Q_1

e) a stock market crash lowers people's wealth



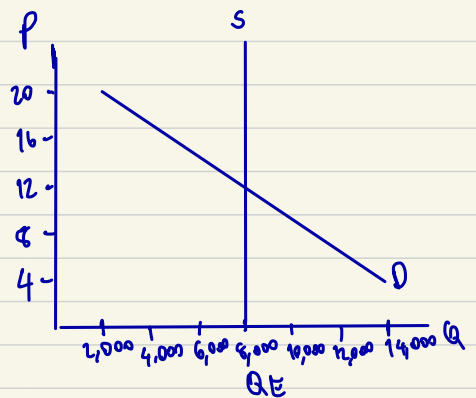
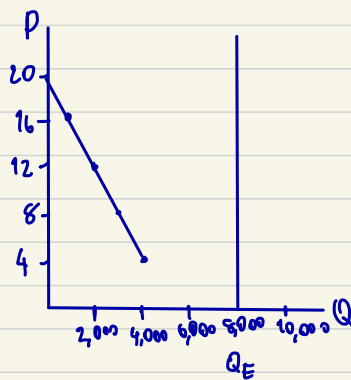
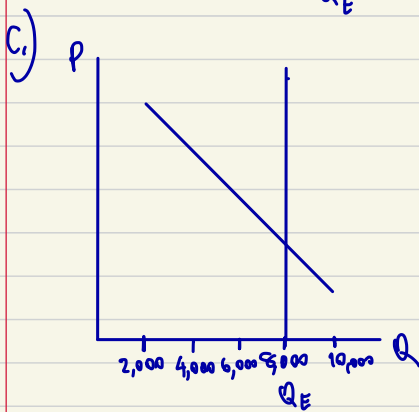
- when people's wealth is lower this is considered as low income
- as low income, demand will decrease [shifts from D to D']
- price decreases from P_0 to P_1
- quantity decreases from Q_0 to Q_1

Q1



- a) - the unusual thing is the vertical supply
- this can be true because sellers want to sell all of the tickets at any price level

b) the equilibrium price = 8
the equilibrium quantity = 8,000



The new equilibrium price is \$12

The new equilibrium quantity is 8,000 tickets.