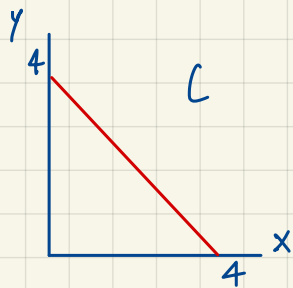
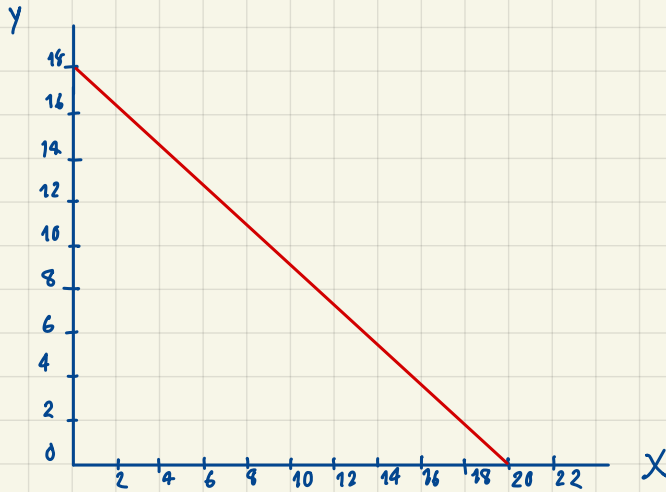


Hw. Farmer C

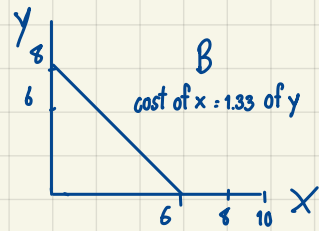
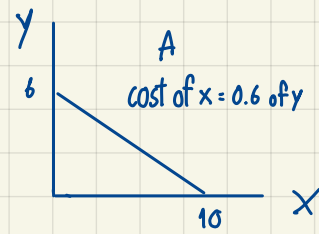


combine these 3 farmer and demonstrate PPC

cost of  $x = 1$  of  $y$



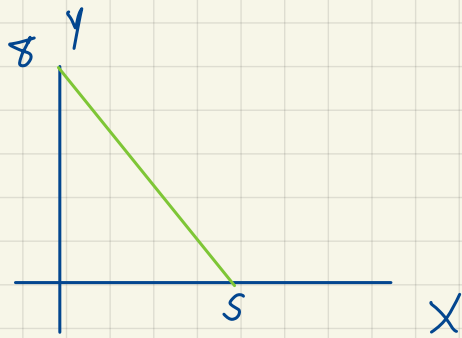
Kan Rianterawongs



X	Y
0	18
1	17.4
2	16.8
3	16.2
4	15.6
5	15
6	14.4
7	13.8
8	13.2
9	12.6
10	12
11	11
12	10
13	9
14	8
15	6.67
16	5.34
17	4.01
18	2.76
19	1.36
20	0

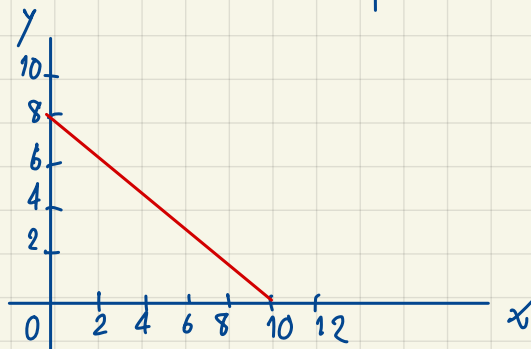


Hw. If the technology of producing  $x$  improved so much that the amount of  $x$  we can have double at all quantities of  $y$ . How will the PPC below change?



cost of  $x$  is higher?  
cost of  $y$  is higher?

If double  $x$  at all quantities of  $y$



the cost of  $x$  is 0.8

the cost of  $y$  is 1.25

X	Y
0	8
1	7.2
2	6.4
3	5.6
4	4.8
5	4
6	3.2
7	2.4
8	1.6
9	0.8
10	0

$\therefore$  The cost of  $y$  is higher than the cost of  $x$