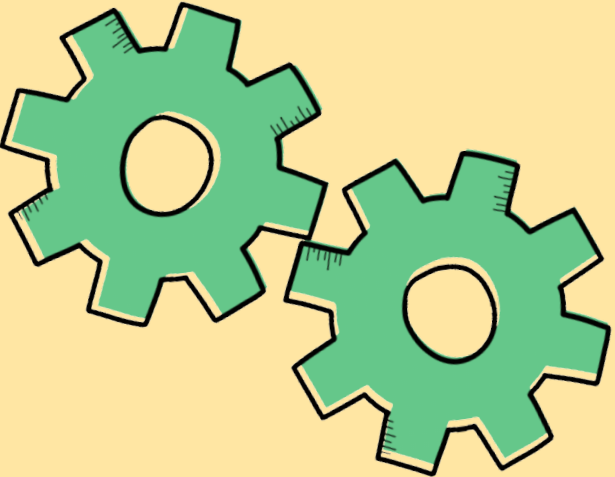


EE364

**FEMALE EDUCATION AND  
LABOR FORCE  
PARTICIPATION IN  
DEVELOPING COUNTRIES**

Group 1

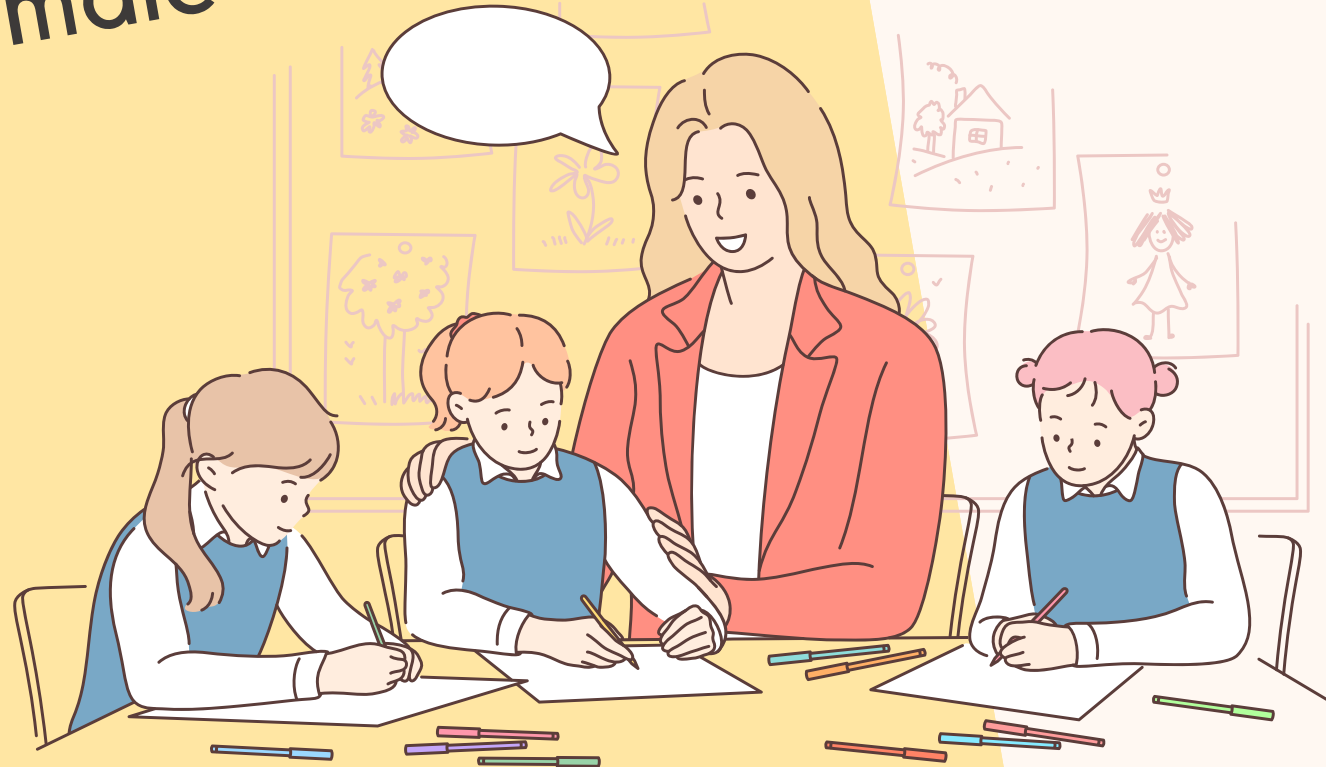




# TODAY'S PRESENTATION

## COVERED CONTENT

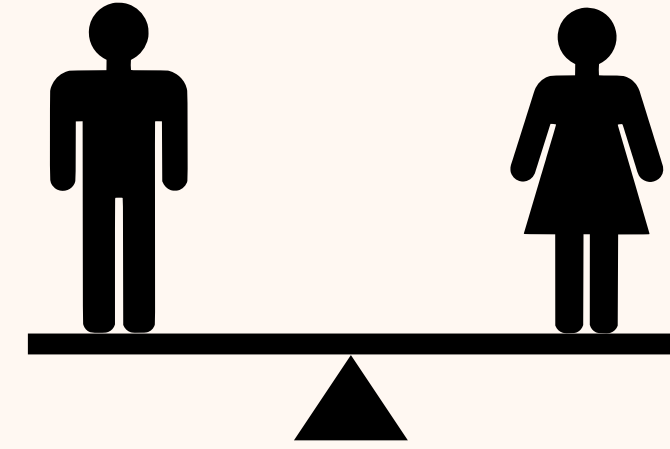
Introduction, Determinants of female education and labor supply, Consequences of increased female education and labor supply, Conclusion



# INTRODUCTION

## Two major trends in most developing countries

- The rise in female labor force participation
- Closing of the gender gaps in school enrollment



## Two main idea

- Increase in female education leads to more women to enter the labor force.
- Improved labor market opportunities have resulted in increases in female education.

## Two main factors to discuss

- Economic forces
- Gender-focused policy



# INTRODUCTION



## CAUSES OF INCREASE IN FEMALE EDUCATION GOVERNMENT POLICIES

- Providing cash to parents
- Developing programs to reduce general gender inequalities
- Improving school building and facilities

## CAUSES OF INCREASED FEMALE EMPLOYMENT

- Sectoral shift from brawn to services industries

## EXAMPLE OF PROGRAM SEEKING TO IMPROVE WOMEN' S WELFARE

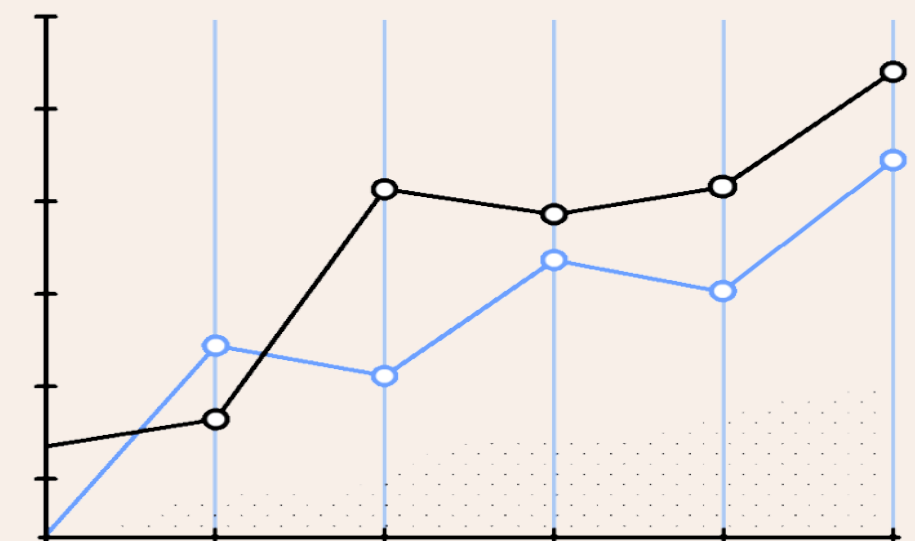
- Micro finance or business skill training
- Free child care

## THE EFFECTS OF INCREASES IN EDUCATION AND LABOR SUPPLY

- Delays fertility
- More healthier
- Better condition

## CONCLUSION OF THE PRESENTATION BENEFITS OF JOB AVAILABILITY:

Bargaining power, children's health  
drawbacks: domestic violence, leisure time, welfare



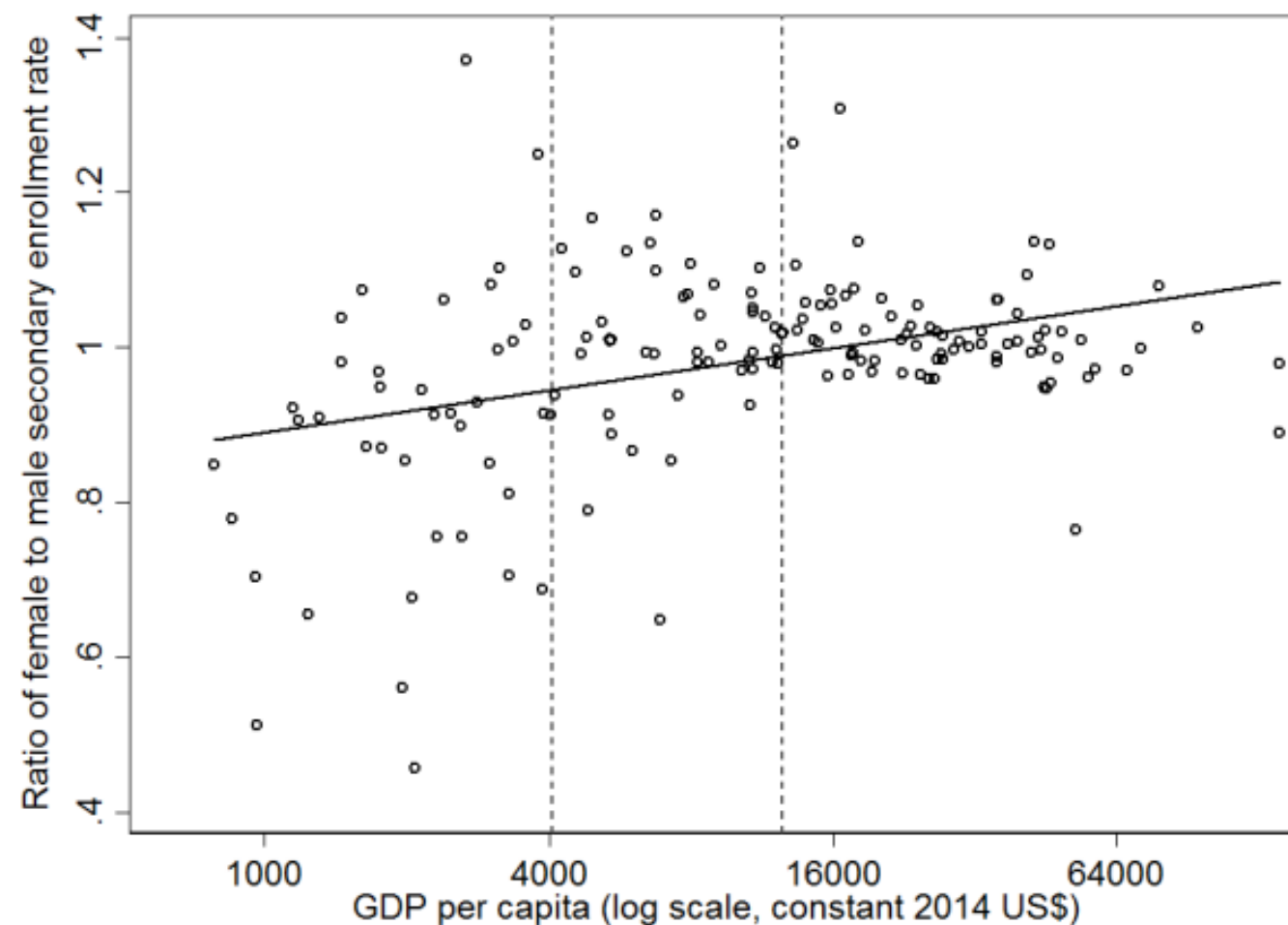


# DETERMINANTS OF FEMALE EDUCATION AND LABOR SUPPLY



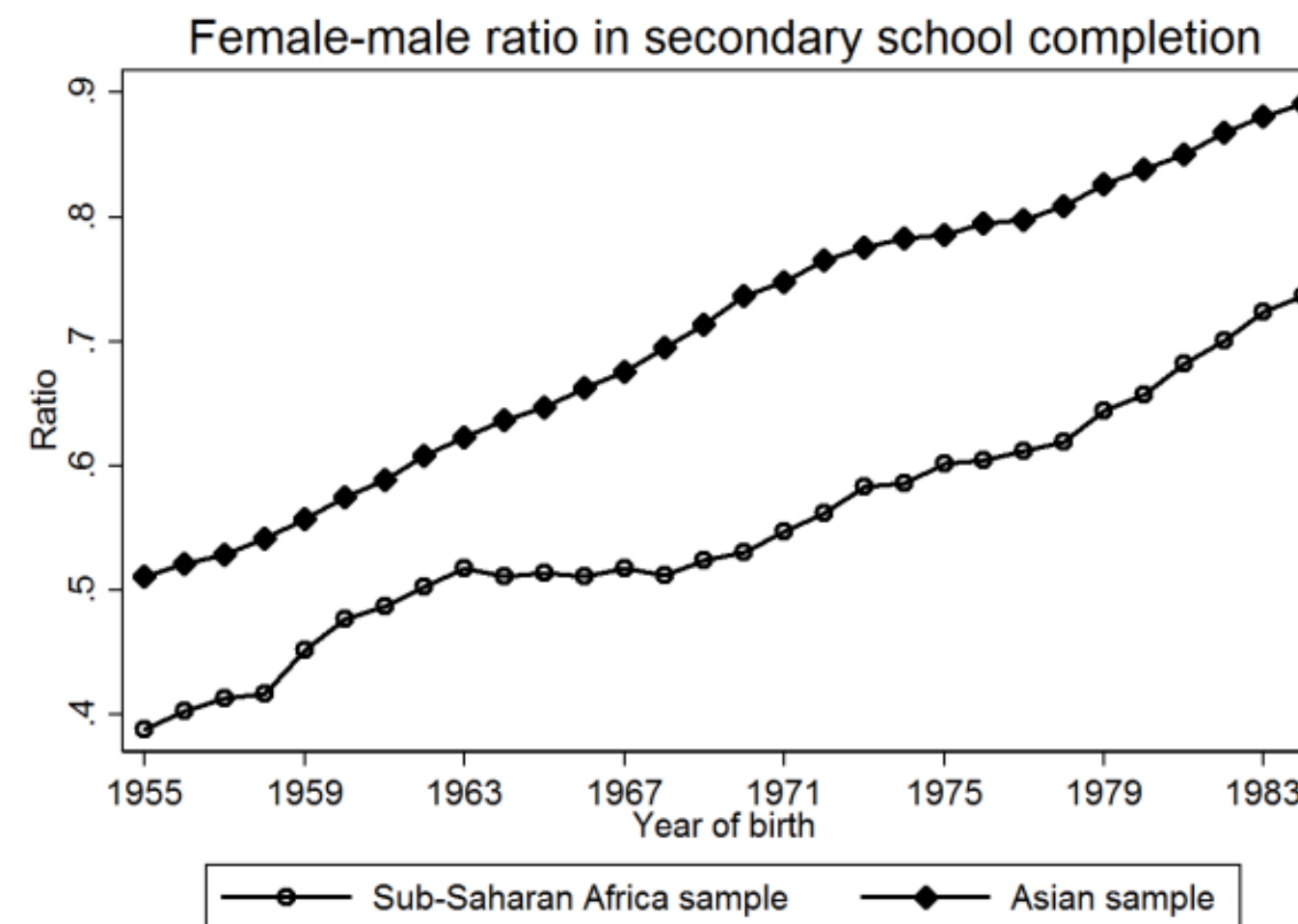
# DETERMINANTS OF INCREASES IN EDUCATION

Figure 1



There is a noticeable male bias in educational attainment at low levels of economic development, which is absent among richer societies. From this figure (figure 1), it shows the relationship between the ratio of female to male secondary enrollment rate in countries around the world and GDP per capita. The ratio is below 1 in most countries this means females have lower enrollment than males but in richer countries, there is gender parity.

Figure 2



In most poor countries, when their economies grow, girls' education rise at a faster rate than boys'. Figure 2 plots the trend in secondary school completion rate for females relative to males among low-income countries in Sub-Saharan Africa and Asia. While both genders' education levels rise over time, the growth is more rapid for females as the increasing ratio female to male education ratio.

# DETERMINANTS OF INCREASES IN EDUCATION

## Economic Forces

### Reason

- Rising female employment rate
- Falling opportunity cost of schooling due to a decrease in parent's fertility and in the time-intensity of home production
- Higher consumption value for parents in supporting girl's education

## Gender-focused policies

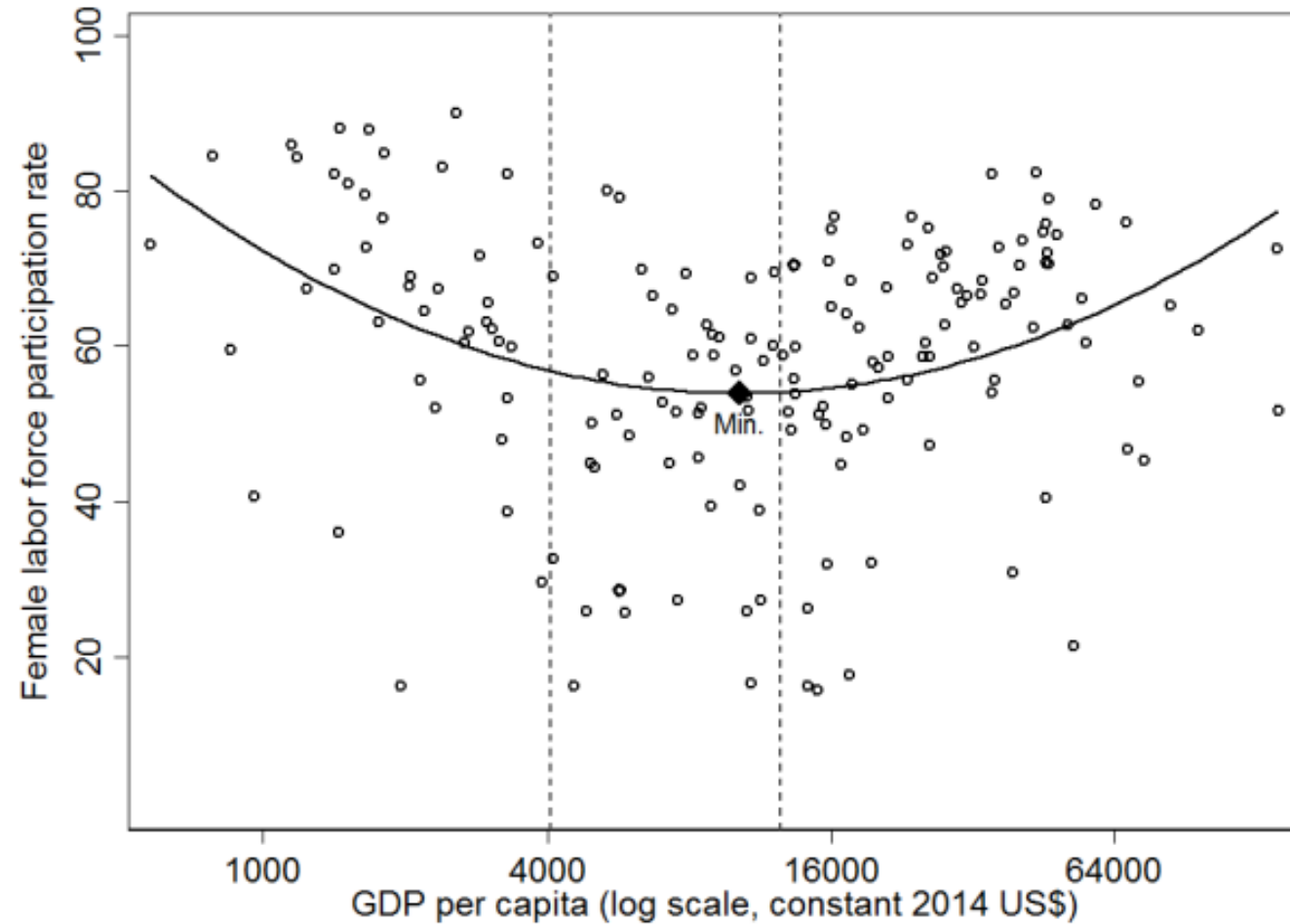
### Reason

1. School infrastructure
  - Building toilets in schools
  - Elimination of school fees for primary schools
2. Conditional cash transfers (CCTs)
  - Bicycles given to girls who remained in secondary school
3. Female welfare improving policy
  - Granting of land inheritance rights to women in India
  - Complementarity between land ownership and education
  - Quotas that increased female representation in elected positions in India led
4. Policies to ban
  - Discouragement of girls' early marriage



# DETERMINANTS OF INCREASE IN LABOR SUPPLY

Figure 3



To conclude, female employment has been increasing in developing countries.

How dramatic this trend is relies on these factors.

First, it matters whether one examines trends unconditionally or conditionally on income.

Second, it matters whether one weighs by country or by a person.

# DETERMINANTS OF INCREASE IN LABOR SUPPLY

*Economic force*

Reason

1. *Education and female labor force participation*

1.1 Choose a high-paying job

2. Shift toward service and light manufacturing

2.1 Trade Liberalization & Globalization.



## Gender-focused policies

### Reason

#### 1. Policies and interventions that encourage female employment

##### 1.1 Microfinance / microcredit

Many microfinance organizations target female entrepreneurs. The opening of female-owned businesses has a modest positive impact.

##### 1.2 Business skill training

Business skills training can improve women's knowledge and success. While women are less free to communicate with others and learn new things.

##### 1.3 Childcare subsidies

Child care subsidies can make a lot of mothers re-enter the labor force.

#### 2. Gender-unequal laws and regulation

Restrictions on women working time (at night) and the barriers to women initiating legal proceedings

# CONSEQUENCES OF INCREASED FEMALE EDUCATION AND LABOR SUPPLY



# CONSEQUENCES

## a) Consequences of increased female education

### 1. Women and their children

#### 1.1 Women's education and early fertility

##### 1.1.1 Increased female education and lowered teen pregnancy rate

###### Result

- The INPRES schooling-building program in Indonesia, the Universal Primary Education program in Nigeria, the elimination of primary schools fees in Uganda, a school subsidy in Kenya, and the 1963 revocation of a military government that relaxed constraints on schooling for Arab women in Israel, all increased education and lowered rates of teen pregnancy.
- An additional year of schooling induced by the UPE program in Nigeria leads to 0.26 fewer births to a woman by age 25 (*Osili and Long*).

###### Argument

- The effect of education on a woman's fertility had disappeared by age 25 (*Breierova and Duflo Indonesian sample*)

##### 1.1.2 Change in women's desired number of children and achievement of their desired fertility

###### Result

- More educated women report lower desired fertility in Uganda, Sierra Leone, and Arab communities of Israel due to increases in bargaining power and household bargaining.
- Education encourages the use of contraceptive methods in Indonesia and the United State.

###### Argument

- A decrease in desired fertility is not entirely driven by the increased opportunity cost of time spent not working where the environment has very low female labor force participation (*Lavy and Zablotsky*)

# CONSEQUENCES

## 1.2 Women's education and children's health

### Result

- Reduction child mortality rate
- Increases women's knowledge about how HIV is transmitted
- Acknowledgement of the way to immunize their children together with improvements in child nutrition status
- The use of preventative care to encourage healthy behaviors of pregnant women to improve baby's health

### Argument

- Rough constant marginal effects of education providing further evidence that increases in mother's education at all levels improves children's health (*Chen and Li*)
- No evidence that the tendency for mother's education to reduce infant mortality (*Grépin and Bharadwaj*)

# CONSEQUENCES

## 1.3 WOMEN'S EDUCATION AND CHILDREN'S EDUCATION OUTCOME

### Result

- Increases in either mother's or father's schooling increased by 10 percent the probability that their child attended a top-6 college (*Tsai et al.*).
- Decrease in maternal mortality (*Bhalhotra and Cochrane*)
- Decrease in HIV risk as an additional year of schooling reduces the cumulative risk of HIV by 11.6 percentage points (*De Neve et al.*)

### Argument

- The amount and quality of teaching mother does at home (*Behrman et al. and Andrabi et al.*)
- The presence of a girls' school does not affect a mother's education if it was built after she had passed primary school age (*Andrabi et al.*)



# CONSEQUENCES

## 2. Women's delayed marriage

### Result

- An additional year of education in Indonesia delays marriage by an average of 0.38 years (Breierova and Duflo).
- Schooling delays marriage (Duflo, Dupas, and Kremer).

### Argument

- No effect of education on marriage timing in Uganda, and among Arab women in Israel (Keats, Erten and Keskin (forthcoming), and Lavy and Zablotsky).

## 4. Increase in women's liberal beliefs in realms

### Result

- Decrease in acceptance of domestic violence in Sierra Leone (Cannonier and Mocan) and Kenya (Friedman et al.)
- Lower measured religiosity such as lower born of wearing a headscarf (Gulesci and Meyersson)
- Increase in political knowledge and reduction in acceptance of political authority (Friedman et al.)

### Argument

- No decrease in acceptance of domestic violence in Turkey (Erten and Keskin)

## 3. Change in women's status within their household

### Result

- Thomas (1990) relationship between Women's education and bargaining power.
- Andrabi, Das, and Khwaja, (2021); Keats, (2014) Limited role for Education in increasing a woman's bargaining power is participation.
- Erten and Keskin (2015) Women with more education tend to face greater incidence of psychological violence or financial control. While with the same rates, women with less education tend to face physical and sexual violence.



# CONSEQUENCES

## B) CONSEQUENCES OF INCREASED JOB AVAILABILITY

- ***Increase in opportunity cost of marriage and childbearing***

Result

- Increase in women's outside options and bargaining power
- Increase in investments in children
- Greater desire to continue working after marriage and having children
- Decrease in marriage and fertility rate

- **Increase in Investment in Girls' Capital**

- Jobs for women have raised the return to girls' human capital.
- Greater female labor supply leads to higher girls' survival rate and life quality.
- Improve Bargaining power
- Unearned income given to women improve girls' health (Duflo)
- Bargaining models improve woman's outside options increase her bargaining power. (Intrahousehold)
- Increasing potential female income increases education of both genders while increasing potential male decreases girls' education. (Intrahousehold)
- \Women with work tend to have a greater participation in household decisions. Working increasing woman's willingness or ability to bargain. (Atkin).

# CONSEQUENCES

## OF INCREASED JOB AVAILABILITY

- **Reduction in leisure time**

- Result

- Increase in men's and children's time in housework (Newman and Skoufias)
  - Increase in female wages decrease women's leisure time (Skoufias)
  - Less housework for women than men in Ecuador (Newman)

- **Intimate partner violence**

- Result

- More violence caused by women with high bargaining power
  - Greater prevalence of violence among women who work outside the home in Bangladesh caused by women with very low education or a young age at marriage
  - Men feeling threatened and lashing out when their women gain economic independence
  - 80% higher odds of domestic violence for women who begin working between rounds compared to women who do not begin working (Krishnan et al.)



- Female Education levels and Rising Female Labor Force Participation are interrelated.
- U-shaped female labor supply curve shifted upwards showing that female labor supply has increased even in a majority of low income countries.
- New economic conditions also support female labor supply both directly and indirectly.
- Increase in education and employment of women have benefited both women and their children.
- Both education and labor force participation also delay fertility and lead to healthier children's life quality.
- Decrease in leisure have increased domestic violence.

# CONCLUSION



**THANK YOU !**

PAPICHAYA JITSOMBOON 6304640920

PARIYA FOONGLADDA 6304640946

PONGPOB PUNNARA 6304641167

PUNNADA SRIDILOK 6304641241

RUNCHIDA AKARASRIMACHAI 6304641340

SITTHA KENGSAKUL 6304641456

SUPAWIT WONG-ARUN 6304641498