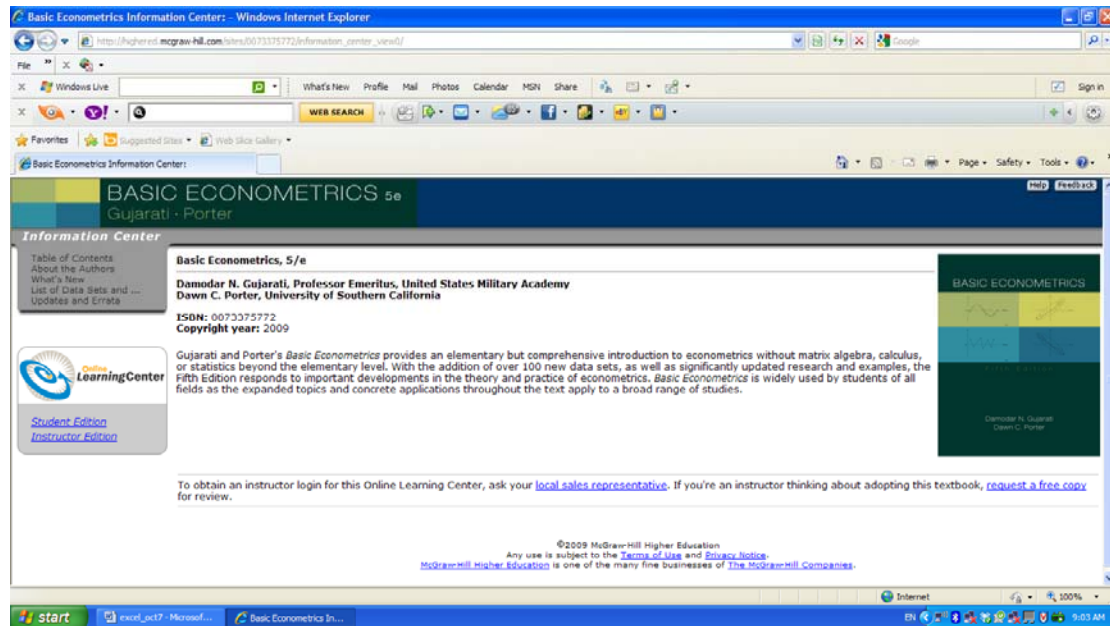
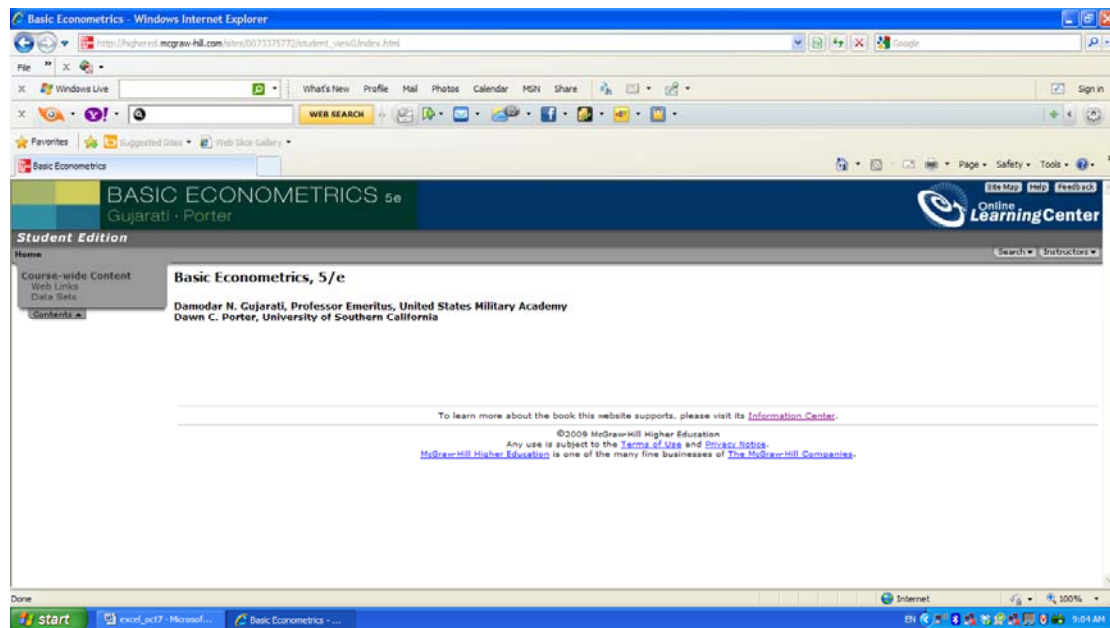


EE 325

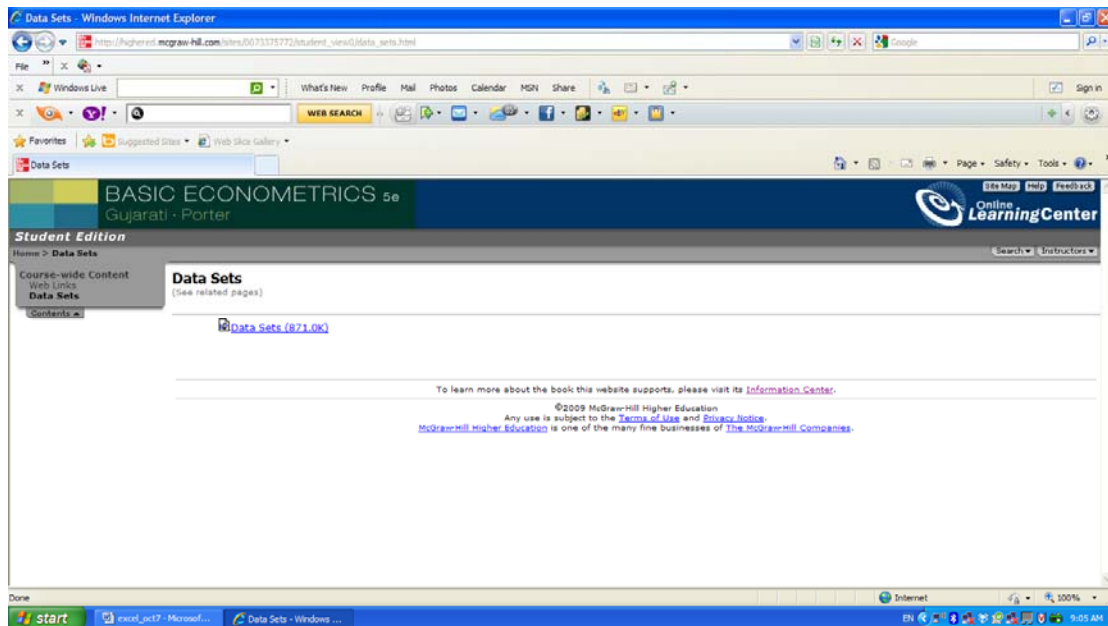
Download the data from www.mhhe.com/gujarati5e



Click on student edition



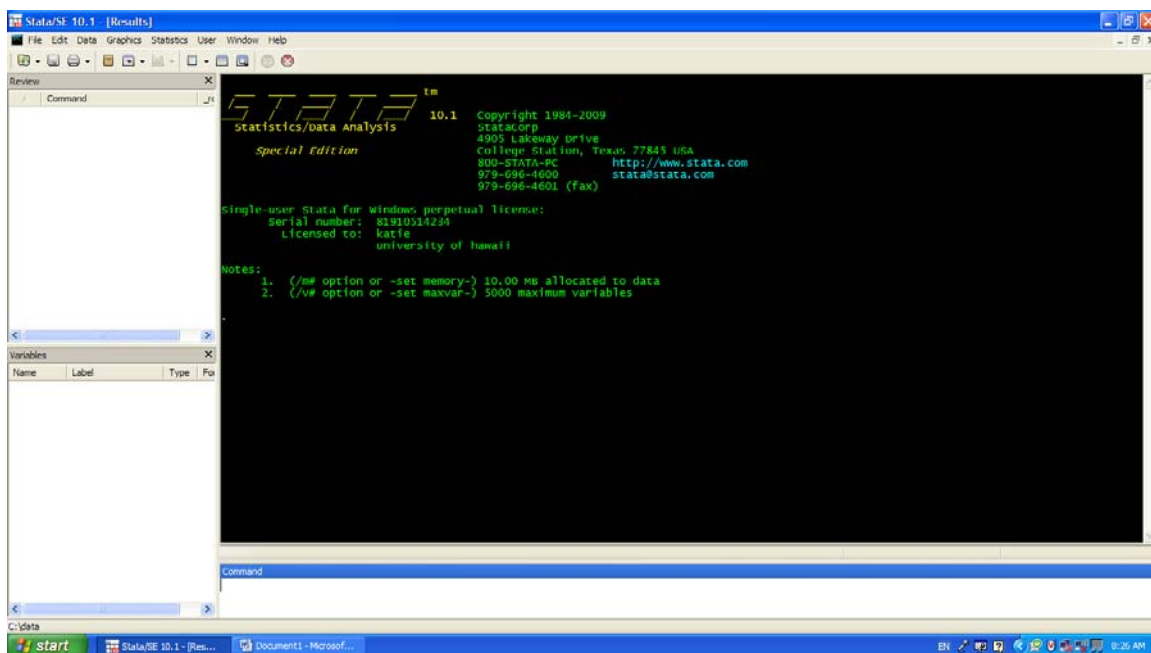
Then click on Data Sets



Double click on data sets and **save** it in one of your folder

STATA SESSION 1

Figure 1 Window of STATA version 10.1



Users can write command on Command window such as reg (for regression), su (for data summary), gen (for generate new variable), di (for display) and etc. If you do not know the particular command, they can click on help then select search.

Basic Command

STATA file has root name include .dta .do .log

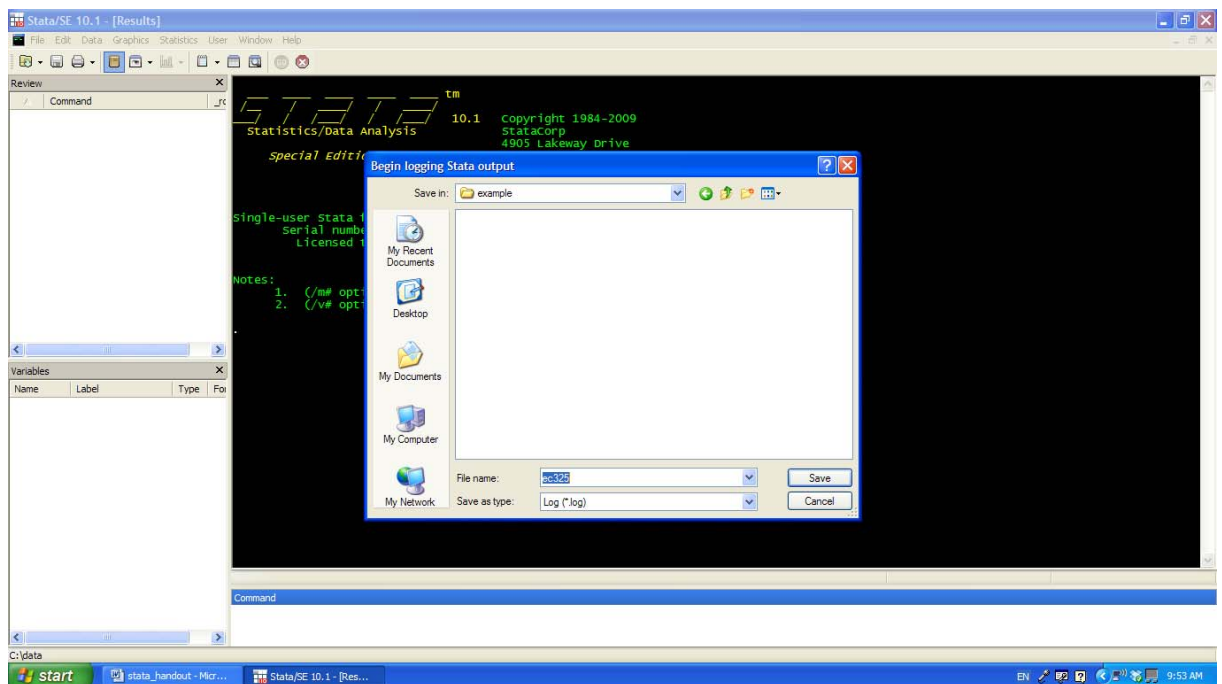
.dta is a root name for data file. This data can transfer from other programs that have different root name such as Excel (.xls or .xlsx), SPSS (.sav), ASCII (.dat) etc. You can use the program called “Stat Transfer” to change data from one root name to others.

.do is a root name for command file that you write on Do-file Editor window.

.log is a root name for file that you save all output from the main window.

1. How to start log file

Click on the icon called “Log Begin/Close/Suspend/Resume”



Begin logging Stata output window will appear. Suppose you want to save all output under drive C folder: example Filename: ec325 Save as type: Log(*.log)

>> log using "C:\example\ec325.log"

2. When you finish and want to close the log file

>> log close

When you want to open log file and replace the previous file

>> log using "C:\example\ec325.log", replace

When you want to open log file and continue from the previous file

>> log using "C:\example\ec325.log", append

3. If you make some change on data and want to replace under the same data file name

>> save "C:\data\table__.dta", replace

4. When you want to start new data set or before you close the program

```
>> clear
```

5. If you want to write message or annotation that do not need any computation from

```
STATA
```

```
>> /*regression equation for question 1*/
```

Data management

1. Data summary

```
>> su
```

2. Rename variable

For example you want to change variable edu to schooling

```
>> ren edu schooling
```

3. Replace the original value with the new value

For example you want to replace the original wage value with original wage divided by 106.

```
>> replace wage=wage/106
```

Generate a new variable

For example you want to generate a new variable called wage2 that computed from original wage divided by 106

```
>> gen wage2=wage/106
```

Create new variable

Generate a dummy variable by using gen

```
>> gen hwage = wage>50000
```

Dummy variable name hwage =1 if wage is greater than 50,000 and

hwage =0 if wage is less or equal to 50,000

Generate a new variable using equation

```
>> gen agesq = age^2
```

```
>> gen lwage = ln(wage)
```

Basic Regression

```
reg Y X1 X2 X3
```

How to draw scatter plot graph on STATA

Click on graphics icon on STATA window and choose Two-way graph

Then choose create

Then select basic plots and choose Scatter

Then select Y and X variable

Click submit