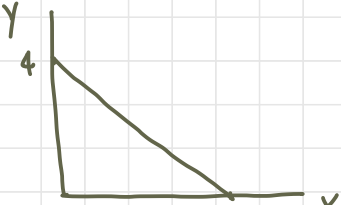
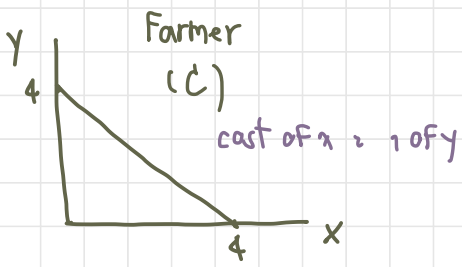
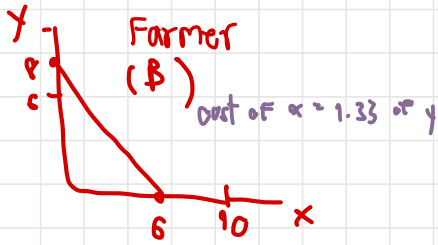
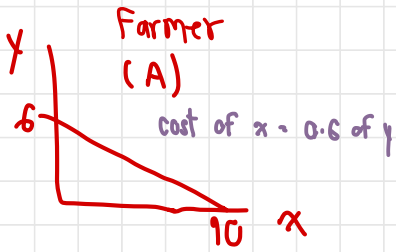


# H.W. Farmer C



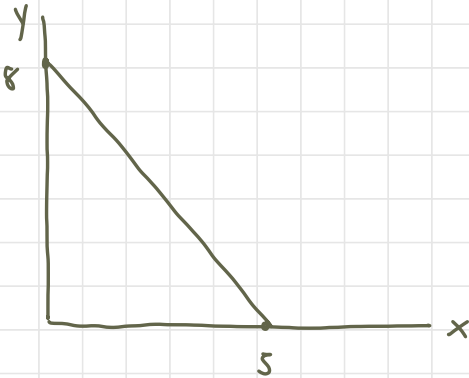
combine these 3 farmers and draw the PPC.

- (A)  $\Rightarrow x = 10, y = 0$
- (B)  $\Rightarrow x = 0, y = 8$
- (C)  $\Rightarrow x = 0, y = 4$



x	y
0	18
1	17.4
2	16.8
3	16.2
4	15.6
5	15
6	14.4
7	13.8
8	13.2
9	12.6
10	12
11	10.67
12	9.34
13	8.01
14	6.68
15	5.35
16	4.02 $\approx$ 4
17	3
18	2
19	1
20	0

H.W. if the tech of producing  $x$  improves so much that the amount of  $x$  we can have doubles at all quantities of  $y$ . How will the PPC below change?



cost of  $x$  is higher?

cost of  $y$  is higher?

Ans. I think the PPC below is unchanged because as the question mentions, it isn't a worse situation to make the PPC below change.