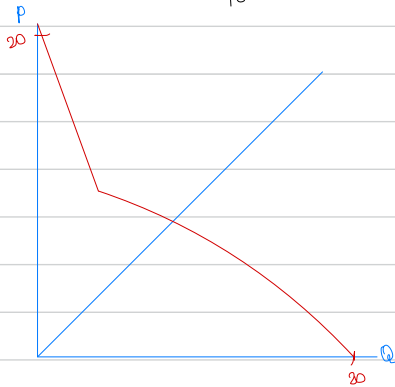
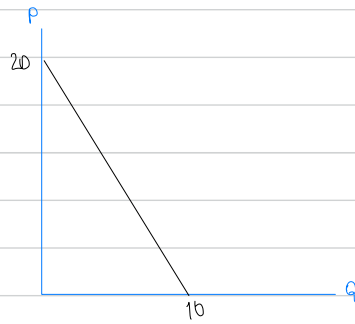
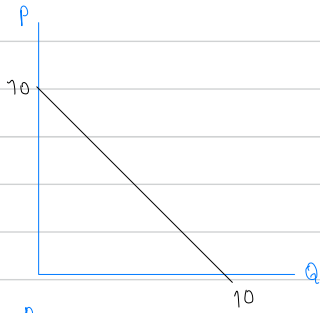


2 consumers

$$A: Q_A = 10 - P \quad P = Q + 10$$

$$B: Q_B = 10 - \frac{1}{2}P \quad P = -2Q + 20$$

1 seller



There will be 2 buyers and 1 seller in mkt

$$\text{Equation: } Q_A + Q_B = 10 - \frac{2P}{2} + 10 - \frac{1}{2}P$$

$$Q_{\text{equation}} = -\frac{3}{2}P + 20$$