

# Coping with the 1998 crisis

## EE360: Lecture 5

Mr. Bhanupong

# Ominous whiff: China's banks in 1H 2016

- China has four of the world's five biggest banks, measured by the size of their assets.
- Some of those assets are turning bad.
- Impaired loans may hurt the profits of Bank of China and Industrial and Commercial Bank of China, which both reported their first-half earnings.
- Borrowers in capital-intensive industries, such as mining, steel and property, are struggling to repay heavy debts incurred during China's manic industrial expansion.

# What follows after rising bad loans

- A rise in bad loans usually leads to a fall in credit growth, as chastened banks turn cautious.
- But China's lending cycle is different.
- Its banks have kept credit flowing, which is one reason why the ratio of bad loans to total loans has plateaued so far this year.

# Souring

Chinese commercial banks' non-performing loans

*Yuan trn*

*As % of total loans*



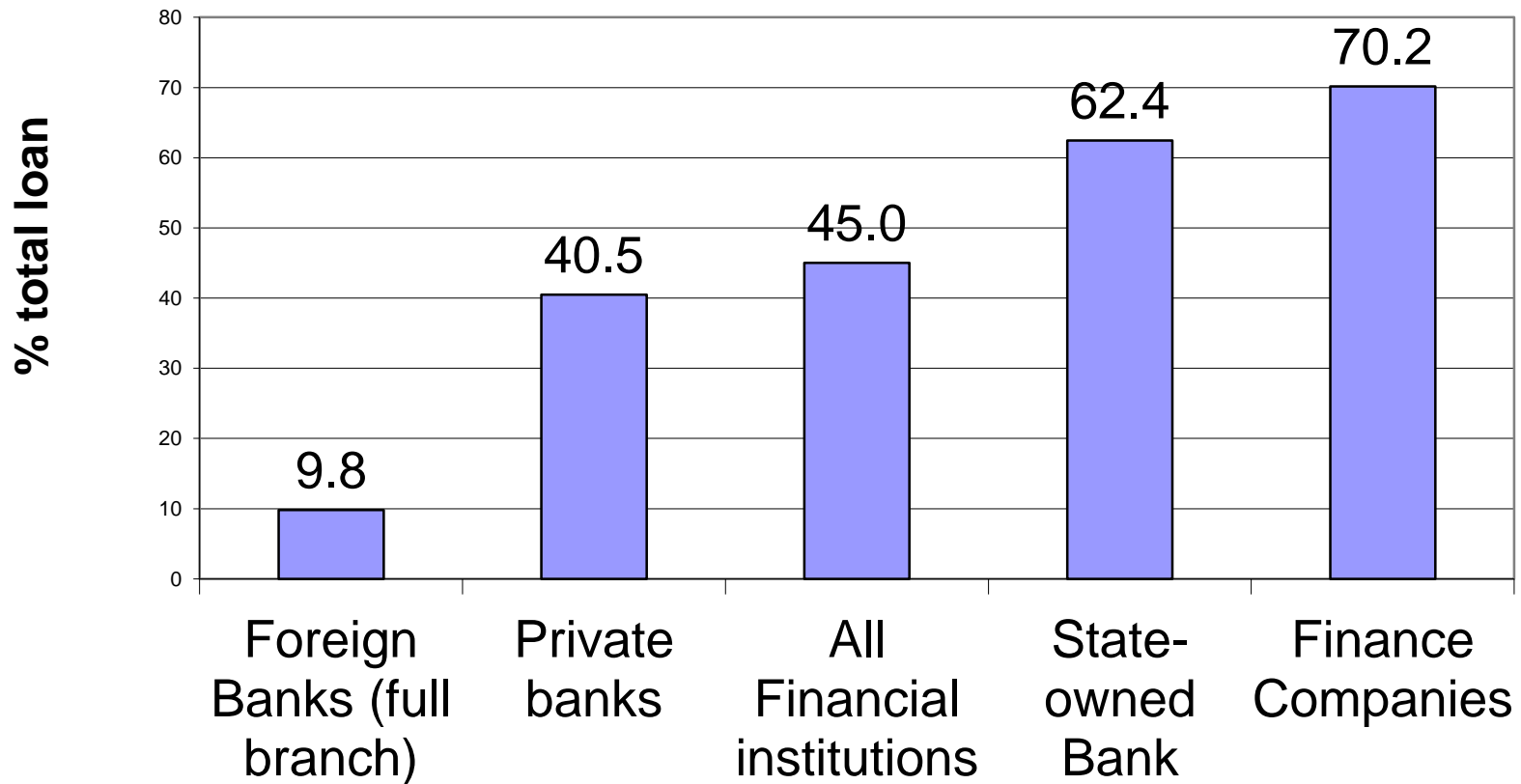
Source: Haver Analytics

# Keep new credit flowing

- This easy credit is helping Chinese industry begin to recover (industrial profits rose strongly in July).
- But the worry remains that these fresh loans will themselves go off in due course.

# Thailand's NPLs

## Non-performing loans in 1998



# 19 years later

|                           | <b>July<br/>1997</b> | <b>July<br/>2014</b> | <b>August<br/>2016</b> |
|---------------------------|----------------------|----------------------|------------------------|
| Baht/dollar               | 55.5                 | 32.6                 | 35.0                   |
| International<br>Reserves | \$30 million         | \$167.5<br>billion   | \$180.2<br>billion     |

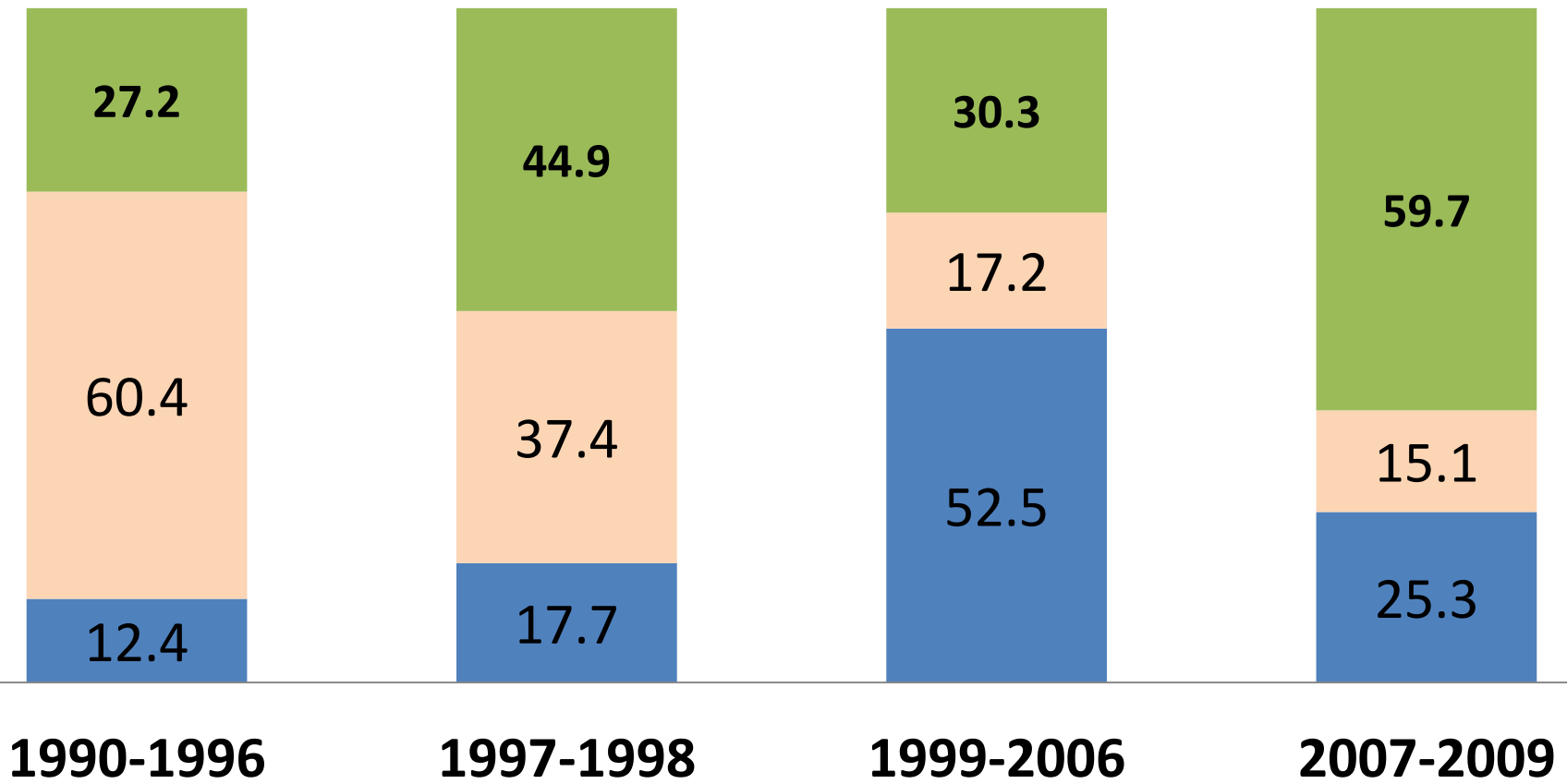
# Outline

- Consequences of capital inflows
- Macroeconomic management and sustainable growth
- The roots of financial crisis
- V-shaped recovery
- Lessons from the 1998 crisis
- Debt deflation episode

# Changing structure of capital flows

% of total

■ FDI   ■ Loans   ■ Portfolio investment



# Adverse Consequences of Capital Inflows

## CONCLUDING REMARKS

A surge in capital inflows into Thailand began in the late 1980s and continued unabated until 1996. The flows brought high economic growth and a surplus in the balance of payments. The rise in capital inflows stemmed from external and internal factors. A decline in world interest rates widened the interest rate differentials, inducing excessive foreign borrowings. Also, domestic financial liberalization increased the sensitivity of capital flows to the interest rate differential. High economic growth in Thailand in the early 1990s also contributed to the surge in capital inflows. Finally, the measures undertaken to establish Thailand as a regional financial centre induced short-term capital flows through offshore borrowings by the nonbank private sector.

The surge in capital inflows caused a Thai case of the so-called "Dutch disease", which results in the appreciation of the real exchange rate and a consequent reduction in external competitiveness. In the Dutch disease, the current account deficit worsens since the price of non-traded goods rises faster than that of traded goods. Moreover, capital inflows relax liquidity constraints and stimulate over lending by commercial banks, resulting in a decline in the private savings rate. Although capital flows

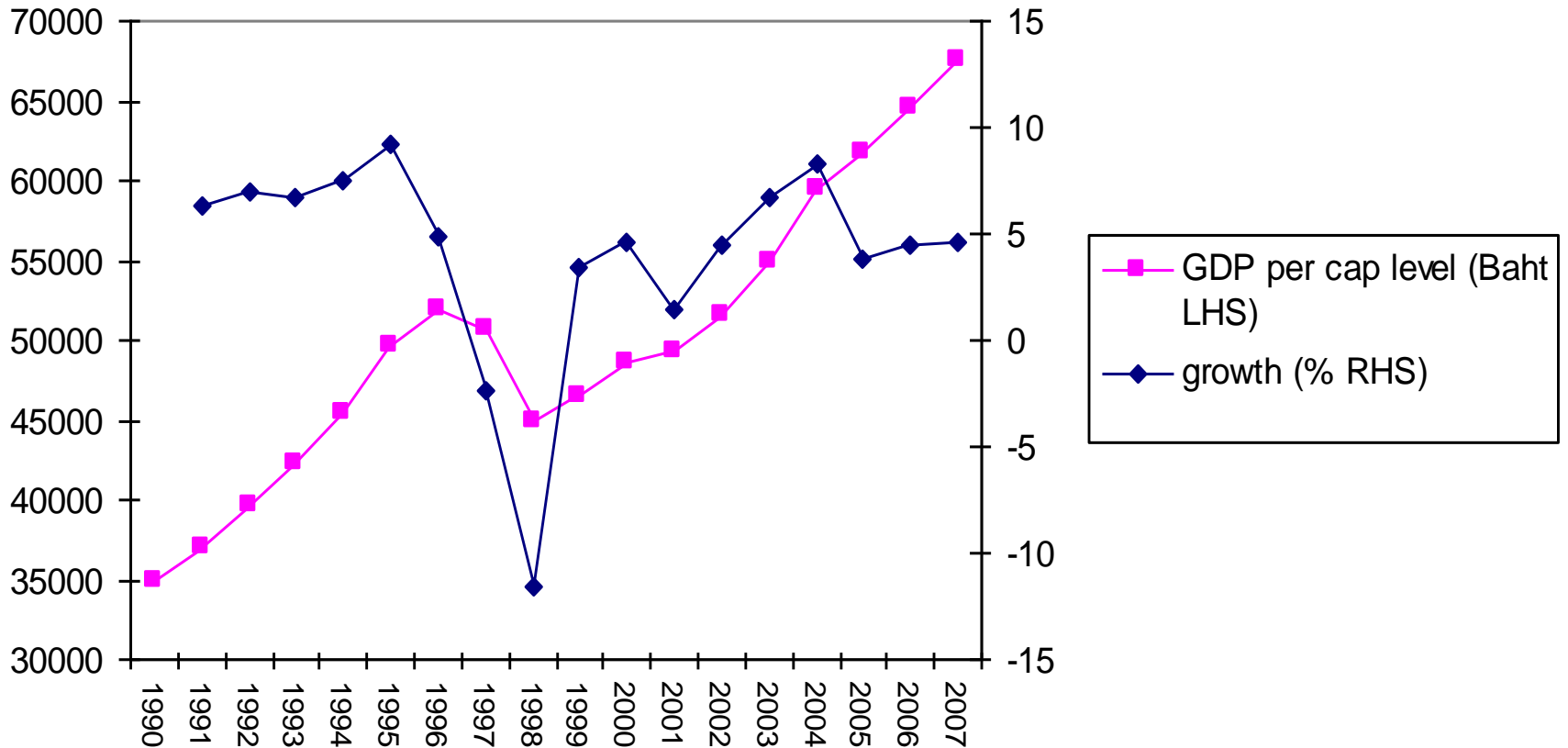
## Lessons from the Currency Crisis

Thailand's experience of currency crisis shows that capital inflows can have both positive and negative impacts. Thailand should have allowed the baht to appreciate during the boom years and should have been satisfied with a lower growth rate. Even if appreciating currency discourages exports, it is better to live with the resulting lower output growth rate and lower level of foreign debt. In addition, capital control relaxation undertaken when bank supervision and financial regulations are not sufficiently stringent can lead to over-borrowing and inefficient lending. A gradual approach to capital account liberalization should be adopted instead. Furthermore, since international capital flows are many times larger than international trade flows, when a country relies too heavily on short-term foreign debt to finance a current account deficit, it is impossible for the central bank to defend a fixed exchange rate for very long—let alone to inflict wounds on currency speculators. Thailand also learned that accountability should be well established so that the central bank is not tempted to engage in behavior that is akin to gambling in order to get out of a crisis.

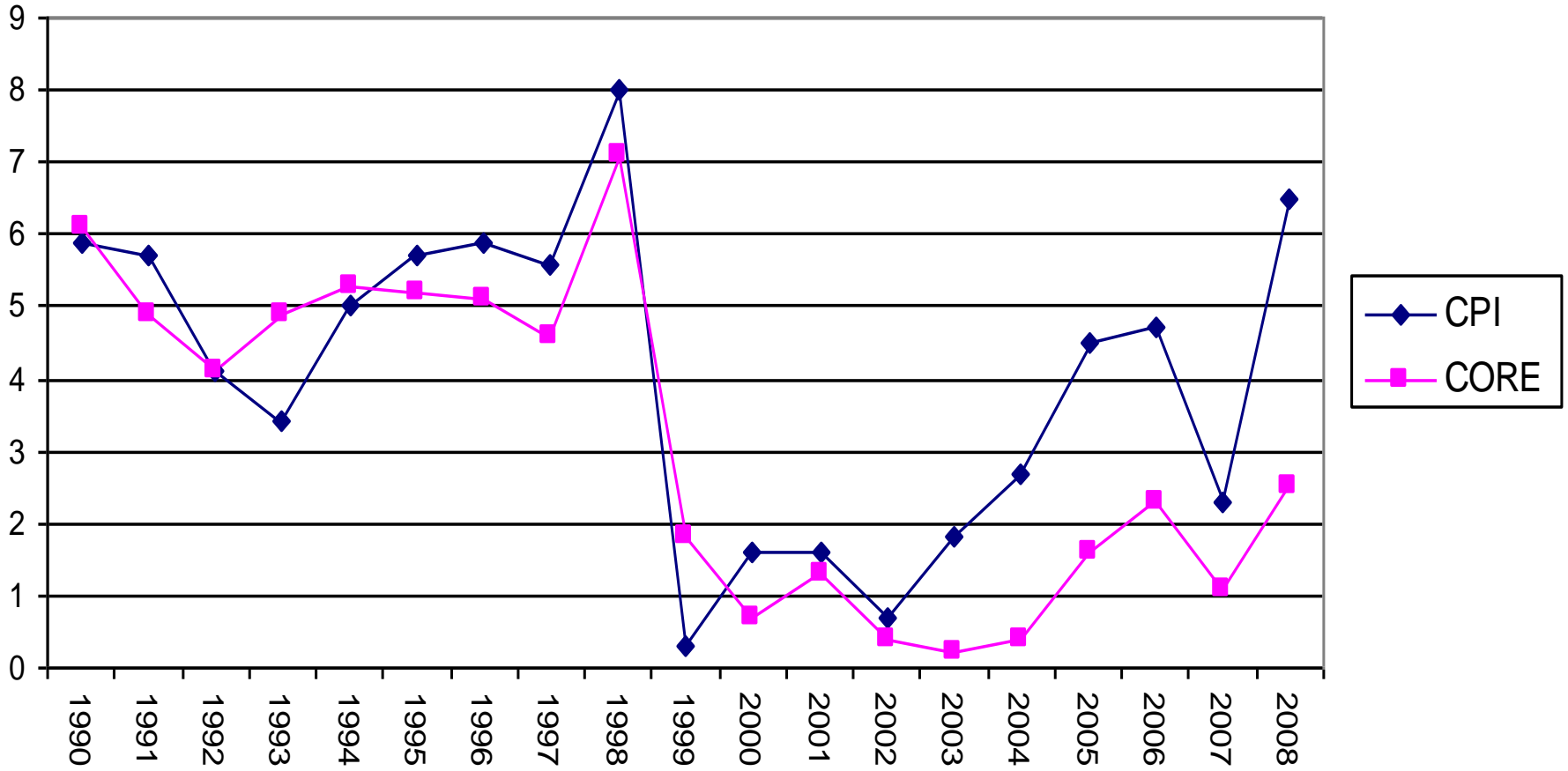
January 1998

# The V-shaped recovery

Real GDP per capita



# Headline and core Inflation



Source: BOT

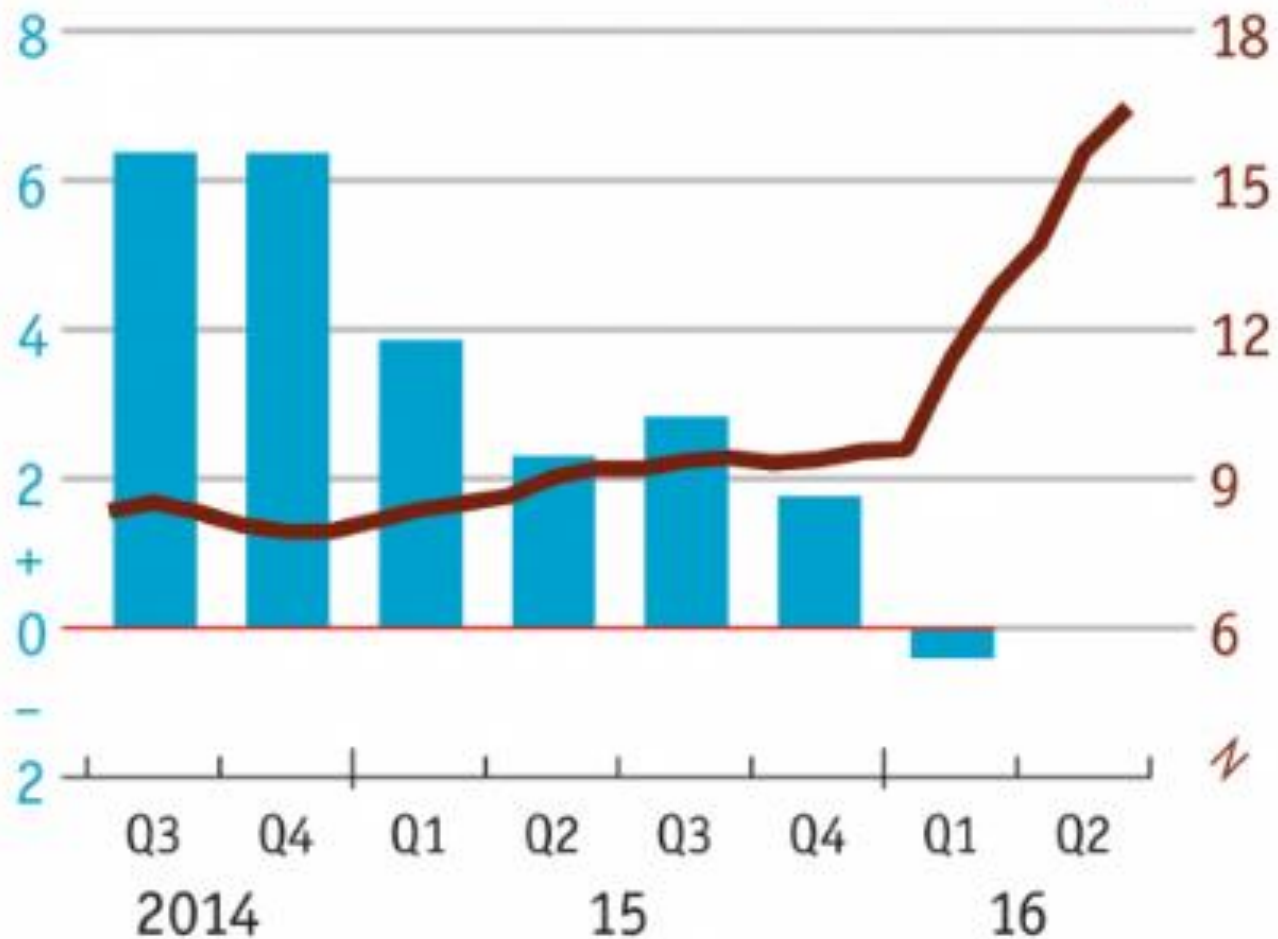
# Ailing



Nigeria, % change on a year earlier

*GDP*

*Consumer prices*



Source: Thomson Reuters

# Circling the drain: Nigeria's recession

- The oil-dependent economy has been ailing since prices fell in 2014.
- A long-expected recession is official.
- GDP contracted by about 1.6% in the second quarter, after tipping into negative territory in the first.

# Why inflation is accelerating?

- Forecasts say the 2016 growth rate will be the worst in more than 20 years.
- Worse, inflation is also galloping upwards: it may have increased to about 17.3% in July, as a plunging currency took its toll.

# Nigerians are justifiably irked.

- Decent jobs are growing scarcer as factories and businesses fold. But others are hurting, too.
- As South Africa's commodity-dependent economy stagnates, the IMF has revised its 2016 growth forecast for sub-Saharan Africa to just 1.6%.
- Income per head is about to start falling for the first time since 1994.

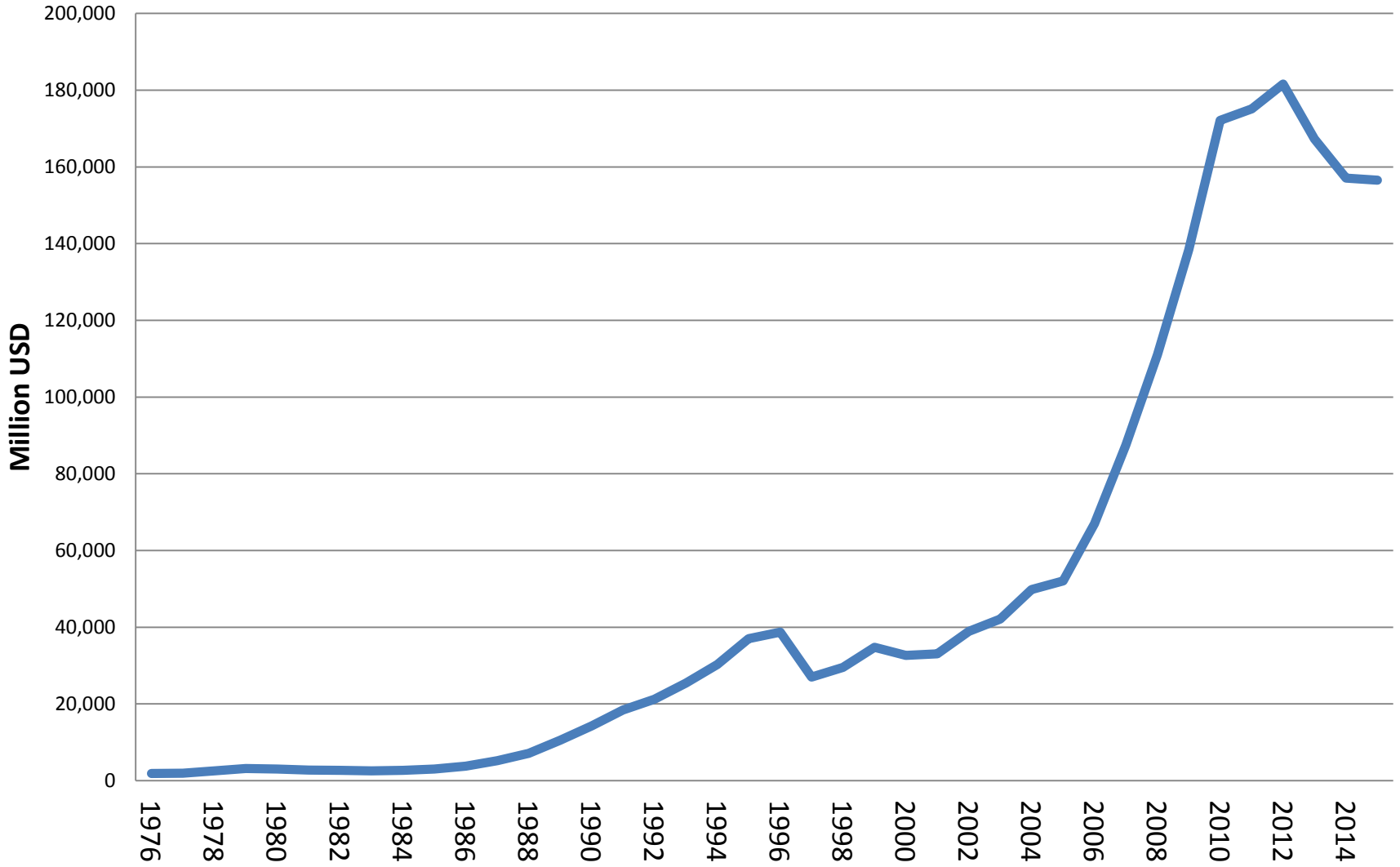
# Shocks and adjustments

- There exist certain **mechanisms** in the structure of the Thai economy that would lessen the impact of the next economic crisis, whether the shock is internal or external.
- These shocks would not have a long-lasting impact and would simply reduce growth temporarily below a stable growth path.
- The adverse impact of shocks was mitigated by the resilient agricultural sector
- Regained the pre-shock growth part in a few years.
- ***Did that mechanism operate in 2009?***

# O learned Thailand

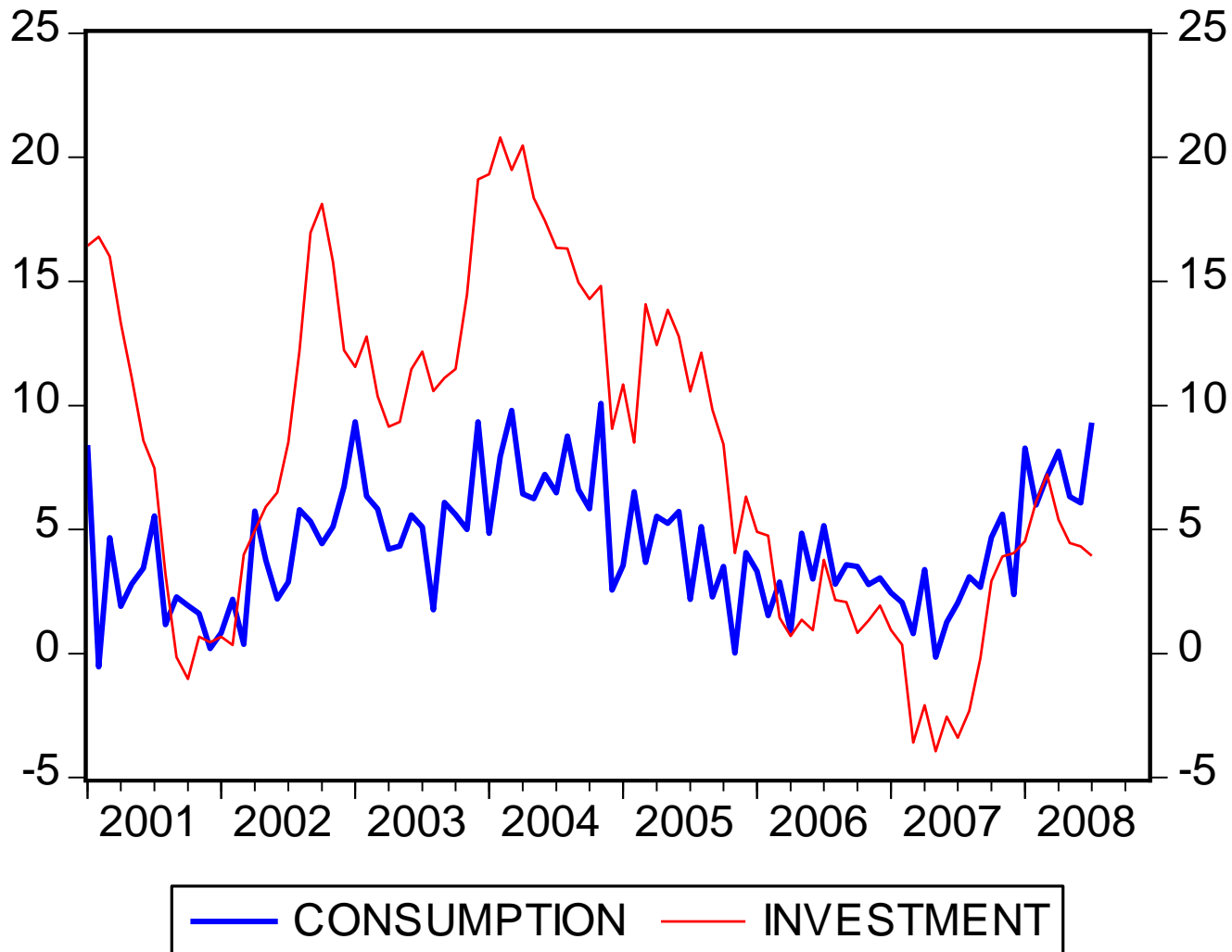
- The Asian currency crisis followed Thailand's decision to float the baht in July 1997.
- What went wrong
- What could have been done to prevent the crisis?
- ***The original sin***
- The impossible trilemma for an open economy

# Thailand's International Reserves



# Long run relationship

Data on *investment expenditures in the past can be used to predict current and future consumption*



# Determinants of investment expenditure

- Fixed and flexible accelerator models
- Neoclassical theory of investment
- Liquidity constraints

# Trend (exponential) growth rate

percentage

January 2000-December 2008

|             | <b>Consumption</b> | <b>Investment</b> |
|-------------|--------------------|-------------------|
| <b>Mean</b> | 4.4                | 7.9               |
| <b>SD</b>   | 2.4                | 6.6               |
| <b>CV</b>   | 0.54               | 0.83              |

# The labor market

- The flexibility of wage rates in Thailand helped mitigate the damaging effect of a sharp fall in output in the aftermath of currency crisis.
- What if downward rigidity exists?
- Unemployment has declined as the economy gradually recovered.

# The labor market

- Inflation remained subdued compared with global inflation
- The resulting fall in domestic interest rates enabled Thai firms to restructure their foreign debts, thereby reducing the degree of vulnerability to **the global financial crisis (2007-2009)**.

# Responses in the agricultural sector

- The agricultural sector has been supporting the Thai economy by generating a high income through out the early 2000s.
- Agricultural output responded positively to high prices for world commodities.
- The agricultural sector generates demand for manufactured products and provides a steady pool of labor for the manufacturing and service sectors.
- It can act as a shock absorber during the time of recession: no body dies of starvation.

# Dynamism of the industry sector

- Export-oriented industries had raised output level far above the pre-crisis period.
- These industries were able to respond to the growing demand generated by the upturn in the business cycle.
- The role of foreign direct investment is crucial to the industrial development in Thailand.
- The consistently open policy towards FDI has contributed to continued flows of **technology transfer** and **spillover effect** into local industries.

# Changing vs. switching expenditure policy

- To restore both external and internal balances, domestic demand (sum of consumption, investment and public spending) and the exchange rate must be allowed to play an equilibrating role .
- To reduce the current account deficit:
  - (1) imports must be reduced through output contraction (cut down domestic absorption);
  - (2) exchange rate must depreciate to switch spending from imports to domestic goods.

# Economic Crisis

- A fixed exchange rate regime created an illusion of a zero foreign exchange rate risk.
- Premature relaxation of capital controls over borrowing in foreign currencies.
- The export shortfall in 1996 and widening current account deficit raised doubt about the sustainability of the baht currency peg.

# Currency and financial crises

- With the baht succumbing to speculative attacks, the Bank of Thailand decided to float the baht on 2 July 1997.
- Without a nominal anchor and given the lack of policy credibility, the value of the baht fell 56% through January 1998.
- This large currency depreciation aggravated the foreign debt burden, causing a credit crunch, bankruptcy, and financial disintermediation.

# Business Sentiment and Consumer Confidence

- The loss of consumer and business confidence stemming from the expected recession exacerbated the contraction in consumption and investment.
- Until the exchange rate rebounded to the level determined by economic fundamentals, the economy will continue this debt-deflation episode.

# Pigou Effect

- $C = f(\text{Net Wealth}/P)$
- In theory, as prices fall during recession, consumption can increase as real wealth increases.
- In practice, prices do not fall large enough to stimulate consumption to move the economy out of recession.
- Irving Fisher (1933) Debt-deflation theory of great depressions, *Econometrica* (1) no.4

# Negative wealth effect

- If net wealth is negative due to rising foreign debt caused by massive devaluation, real debt burden increases when price level falls.
- Hence price deflation increases real value of debt, leading to further contraction of consumption and contraction of output.

# Debt-deflation episode in Thailand

*A fixed exchange rate regime can create an illusion of a zero-exchange rate risk, while premature relaxation of capital controls can encourage overborrowing in foreign currencies. Currency and maturity mismatching of Thai commercial banks generated their overexposure to external shocks. The export shortfall in 1996 and widening current account deficit raised doubts concerning the sustainability of the baht currency peg. With the baht succumbing to speculative attacks, the Bank of Thailand decided to float it on 2 July 1997. Without a nominal anchor and given the lack of policy credibility, the value of the baht fell by 56% through to January 1998. This large currency depreciation aggravated the foreign debt burden, causing a credit crunch, high interest rates, bankruptcy, and financial disintermediation. The loss of consumer and business confidence stemming from the expected recession exacerbated the contraction in investment and consumption. Until the exchange rate rebounds to a level determined by economic fundamentals, the economy will continue this debt-deflation episode.*

# Review questions

- How did Thailand cope with the Global Financial Crisis (GFC)?
- Did Thailand learn any lessons from the past mistakes?
- How resilient is the Thai industry when facing external shocks?

# Review questions

- What are social implications of Thailand's economic fluctuations?
- How important is the role of macroeconomic policy management for long term growth?
- Compare and contrast Nigerian economic problems in 2016 with Thailand's in 1998.