

YUKTI MUKDAWIJITRA

AN 201 INTRODUCTION TO ANTHROPOLOGY

BE, FACULTY OF ECONOMICS, THAMMASAT UNIVERSITY

LANGUAGE

HISTORICAL BACKGROUND

- ▶ Vernacular languages had not been important until the late 19th century. Important languages were Latin, Greek, Hebrew, Sanskrit, Pali.
- ▶ Explorers, missionaries found language variety all over the world. The Bible were translated into over 500 languages.
- ▶ The emergence of the "nation-state" assuming one nation, one language.
- ▶ The industrialization required laborers to speak the same language.
- ▶ Local nationalism and democracy. The German romanticism, like Wilhelm and Jakob Grimm.

AS A SUBFIELD IN ANTHROPOLOGY

- ▶ physical anthropology
- ▶ archaeology
- ▶ ethnology (social anthropology, cultural anthropology)
- ▶ linguistic anthropology

RELATING FIELDS

- ▶ philology and etymology
- ▶ linguistics
- ▶ ethnolinguistics
- ▶ anthropological linguistics
- ▶ linguistic anthropology

THE SCOPE OF LINGUISTIC ANTHROPOLOGY

- ▶ Language and various human behaviors
- ▶ The context beyond the language
- ▶ Language variation
- ▶ Characteristics of particular languages
- ▶ Participant observation in linguistic situation

LEVEL OF LINGUISTIC RESEARCH

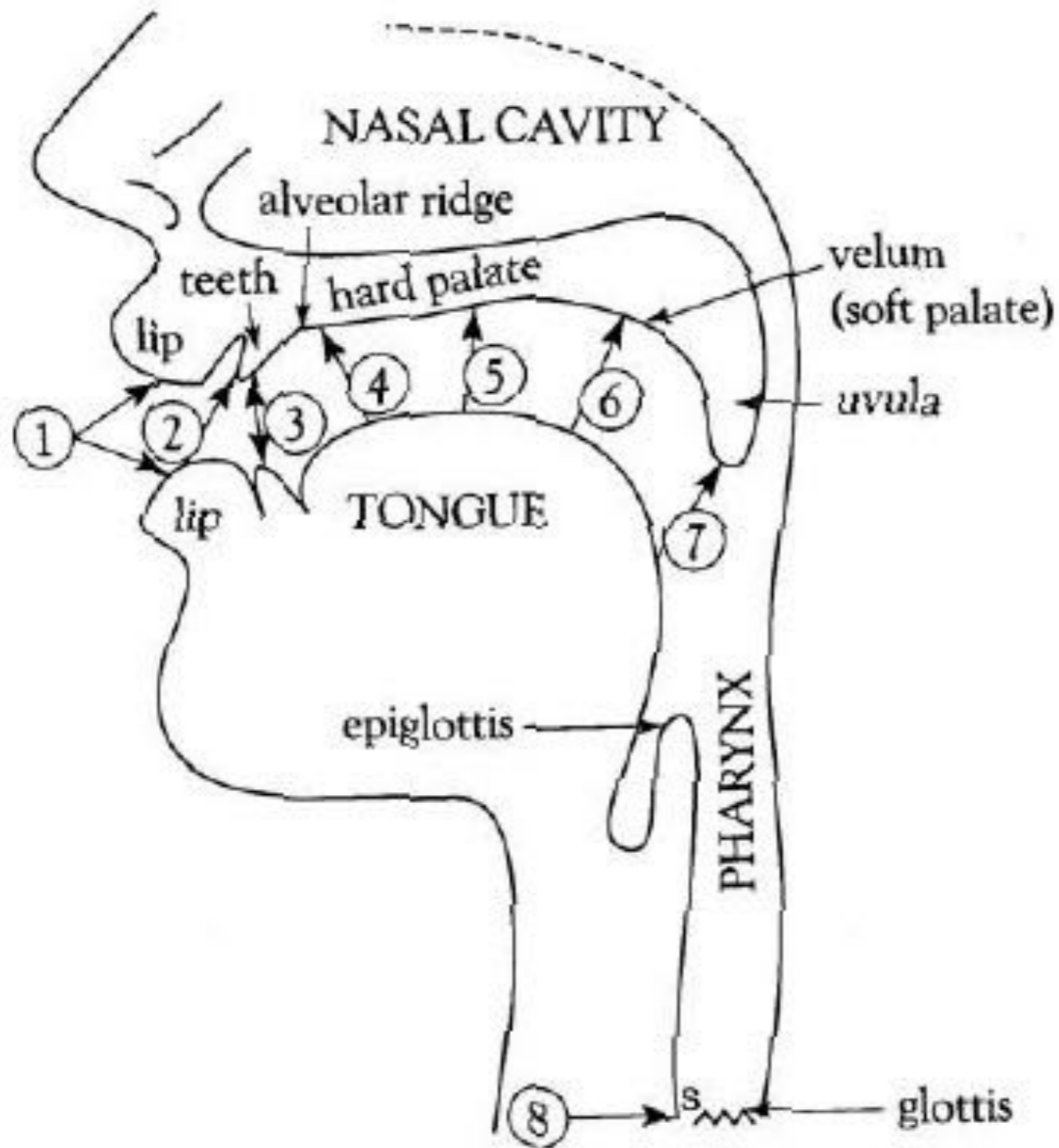
- ▶ Participation: learn to access the community
- ▶ Generating: learn to collect data
- ▶ Validating: capable of verifying the data
- ▶ Penetrating: understand culture and society
- ▶ Foundational: establish new knowledge

ELEMENTARY FORM OF LANGUAGE

- ▶ phoneme
- ▶ morpheme
- ▶ syntax

PHONEME

- ▶ phonetics (phone etic): studies how sounds are articulated in each language without paying attention to the users.
- ▶ phonemic (phone emic): studies how the native speakers classify sounds no matter whether or not the sounds differ.



The vocal tract—places of articulation are marked.

1. bilabial 2. labiodental 3. interdental 4. alveolar
 5. alveopalatal 6. velar 7. uvular 8. glottal

The International Phonetic Alphabet Keyboard(2005 revised edition)

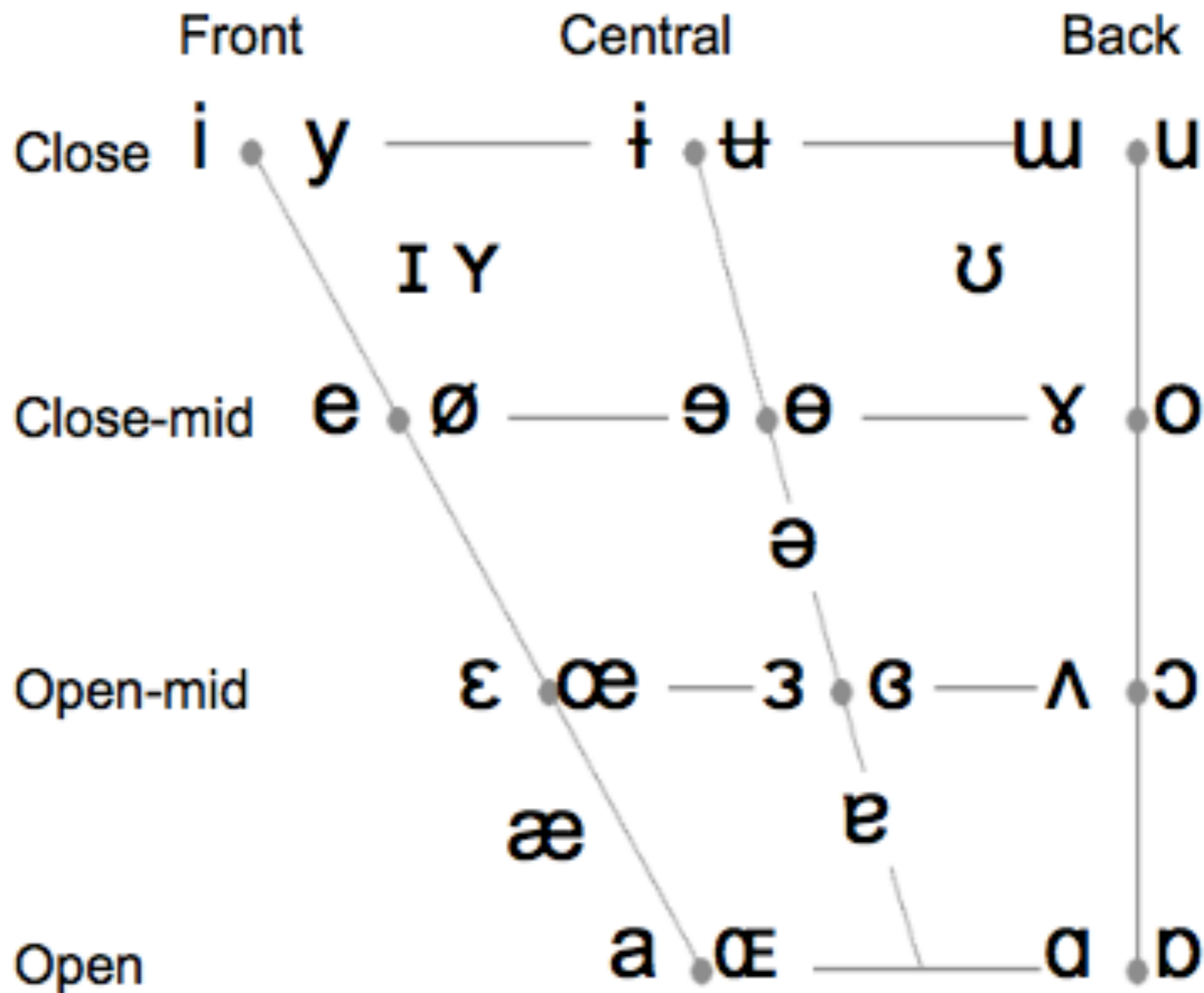
Consonants (Pulmonic)

Missing some symbols? Apply Doulos SIL font

	Bilabial	Labiodental	Dental	Alveolar	Postalveolar	Retroflex	Palatal	Velar	Uvular	Pharyngeal	Glottal
Plosive	p b			t d		ʈ ɖ	c ɟ	k ɡ	q ɢ		ʔ
Nasal	m	ɱ		n		ɳ	ɲ	ŋ	ɴ		
Trill	ʙ			r					ʀ		
Tap or Flap		ⱱ		ɾ		ɽ					
Fricative	ɸ β	f v	θ ð	s z	ʃ ʒ	ʂ ʐ	ç ʝ	x ɣ	χ ʁ	ħ ʕ	h ɦ
Lateral fricative				ɬ ɮ							
Approximant		ʋ		ɹ		ɻ	j	ɰ			
Lateral approximant				l		ɭ	ʎ	ʟ			

Where symbols appear in pairs, the one to the right represents a voiced consonant. Shaded areas denote articulations judged impossible.

Vowels



Where symbols appear in pairs, the one to the right represents a rounded vowel.

<https://www.youtube.com/watch?v=c246fZ-7z1w>

<https://www.youtube.com/watch?v=Nz44WiTVJww>



<https://www.youtube.com/watch?v=C0CIRCjoICA>



PHONEMIC

- ▶ free variation
- ▶ conditioned variation

MORPHOLOGY

- ▶ the formation of a “word”
- ▶ free morpheme
- ▶ bounded morpheme:
 - ▶ stem/root/base
 - ▶ affixes: prefix, infix, suffix
- ▶ function morpheme: used for
- ▶ allomorphs: different forms used with similar meanings, like a, an; un-, ir-, im-.

SYNTAX

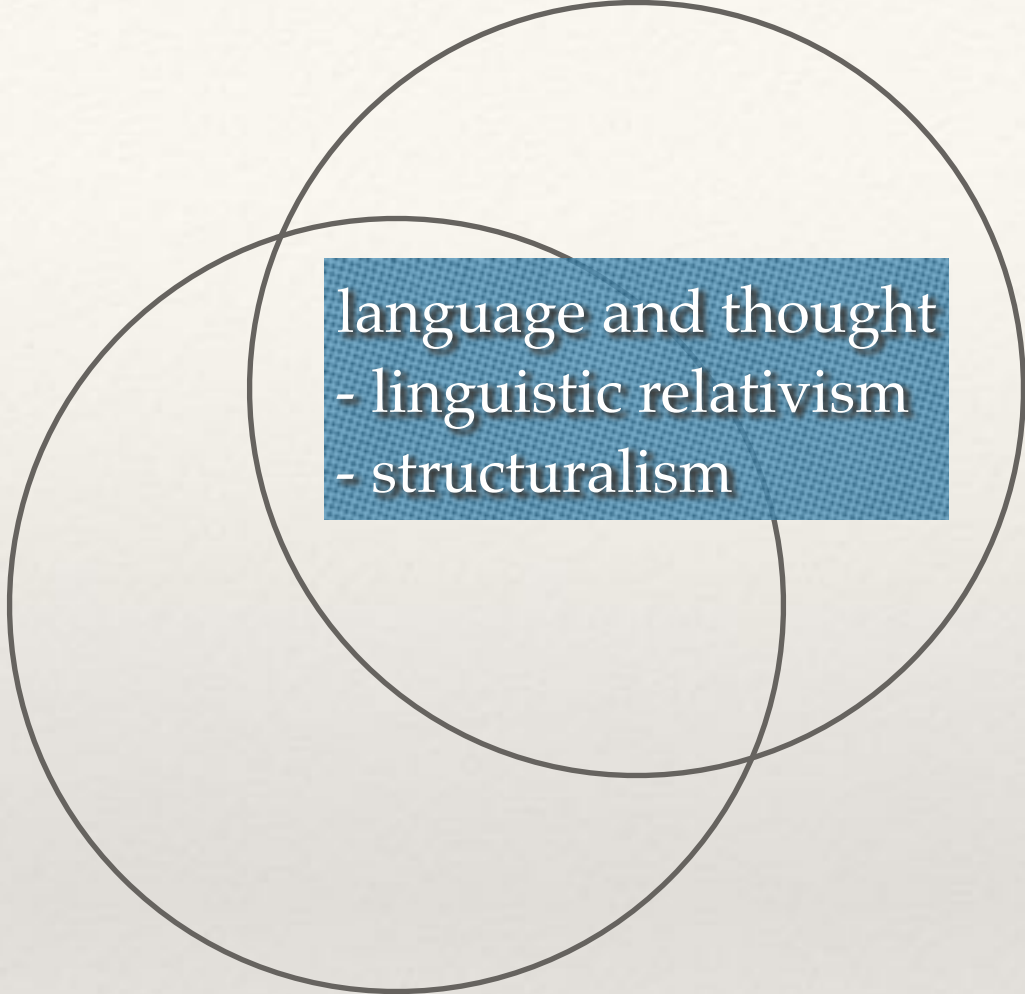
- ▶ how to form morphemes into a sentence in each language.
- ▶ Basic syntax:
 - ▶ Subject-Verb-Object (SVO)
 - ▶ Subject-Object-Verb (SOV)
- ▶ Deep structure of the syntax: all languages articulated differently to refer to the same meaning (Noam Chomsky).

THEORIES IN LINGUISTIC ANTHROPOLOGY

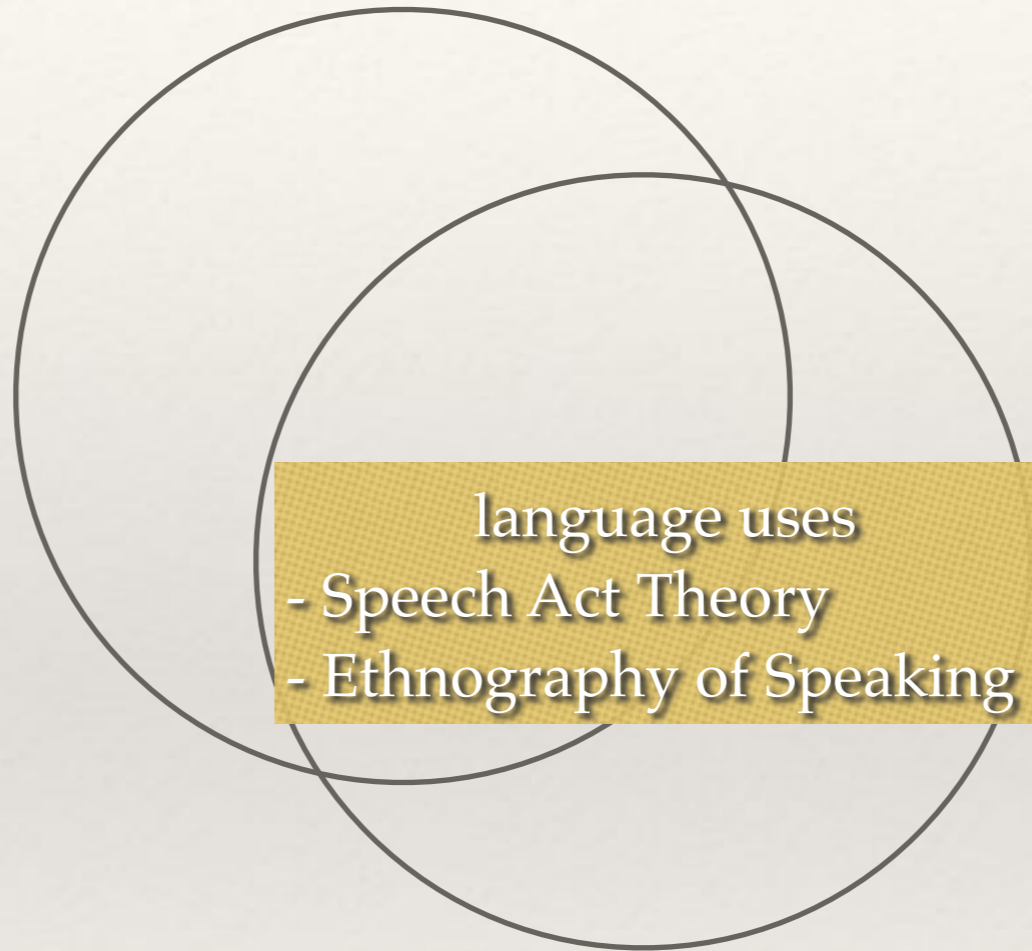
- ▶ language and thought
- ▶ language uses
- ▶ language and power
- ▶ materiality of language



language



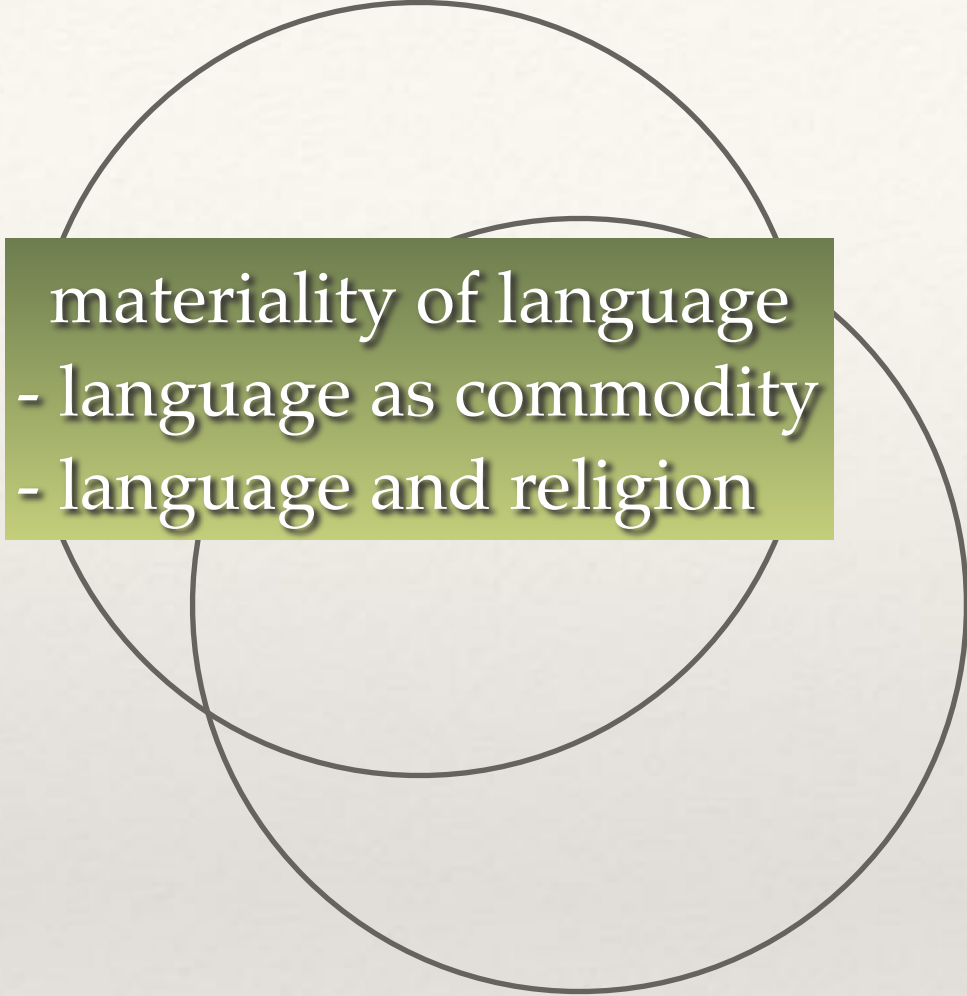
language and thought
- linguistic relativism
- structuralism



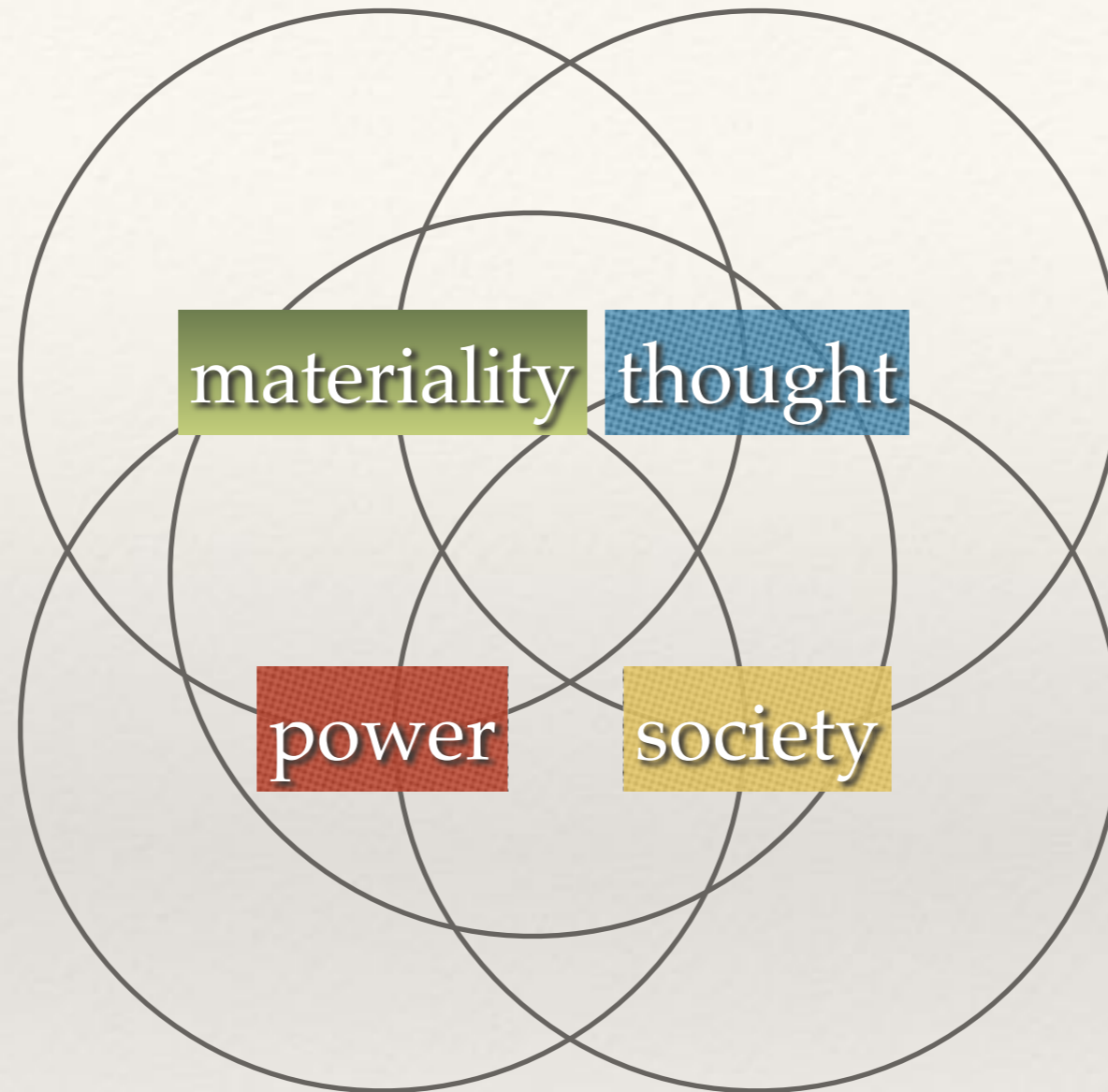


Language and Power

- language and mode of production
- cultural capital
- gender, class, ethnicity



materiality of language
- language as commodity
- language and religion



materiality

thought

power

society

LANGUAGE AND THOUGHT

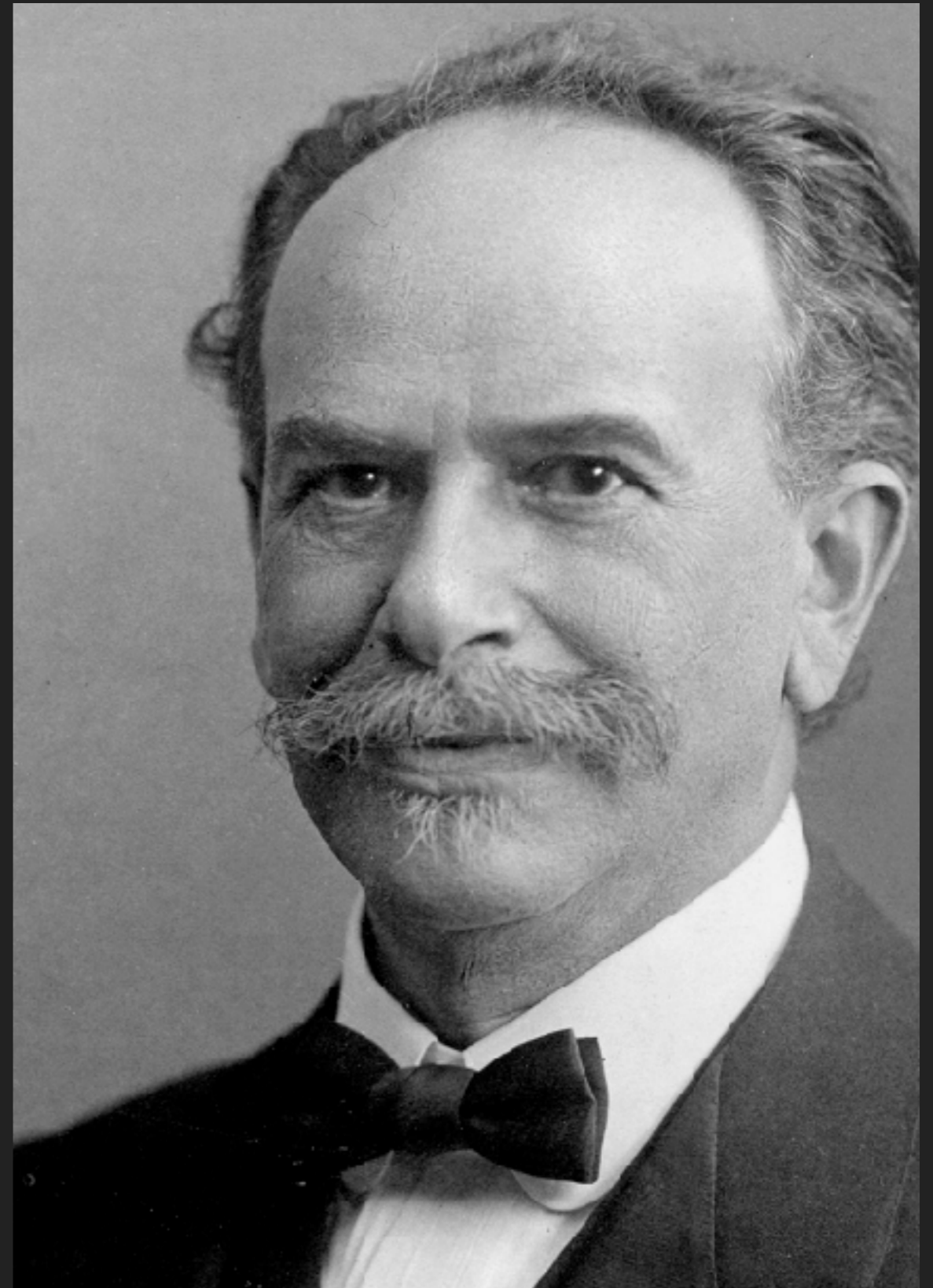
WILHELM VON HUMBOLDT (1767–1835)

- ▶ every language has its particular forms and its particular ideas.
- ▶ a native speaker of one language is shaped by one's mother tongue.
- ▶ this is the "inner form" that shaped one's ideas and expressions.



FRANZ BOAS (1858-1942)

- ▶ Linguistics and Ethnology (1911)
- ▶ How linguistics links to anthropology.
- ▶ Can we study culture via language?
- ▶ What is the difference between language and culture?



peoples of the world. If ethnology is understood as the science dealing with the mental phenomena of the life of the peoples of the world, human language, one of the most important manifestations of mental life, would seem to belong naturally to the field of work of ethnology, unless special reasons can be adduced why it should not be so considered. It is true that

THE EYE IS THE ORGAN OF SIGHT.

LANGUAGE AND CULTURE

- ▶ grammar
- ▶ lexicon
- ▶ metaphor
- ▶ color terms (also emotion terms, taste terms, odor terms, etc.)

ข้าวเปลือก	thóc	rice seed
ต้นข้าว	lúa	rice plant
นาข้าว	đòng	rice field
ข้าวเฝ้า	còm	young rice
ข้าวสาร	gạo	unhusked rice
ข้าวสวย	com	cooked rice



Map showing approximate area (shaded) occupied by the Nuer.

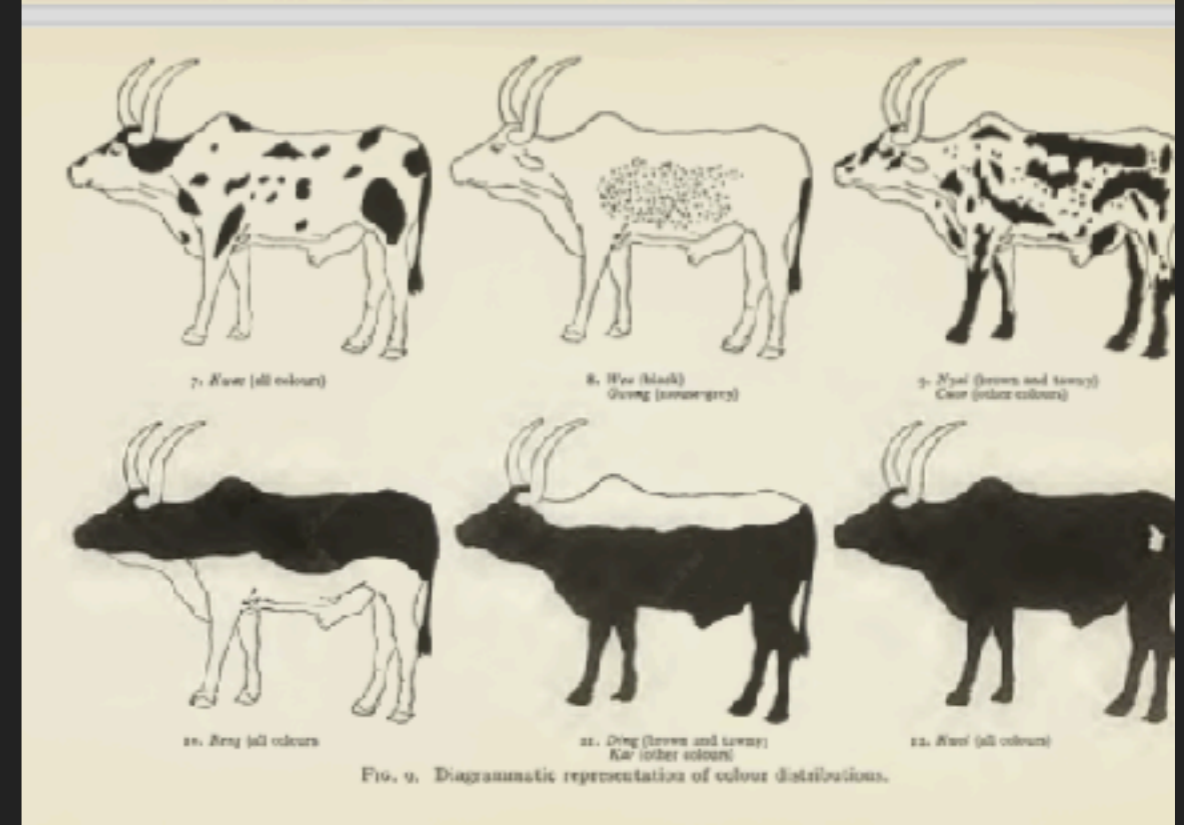
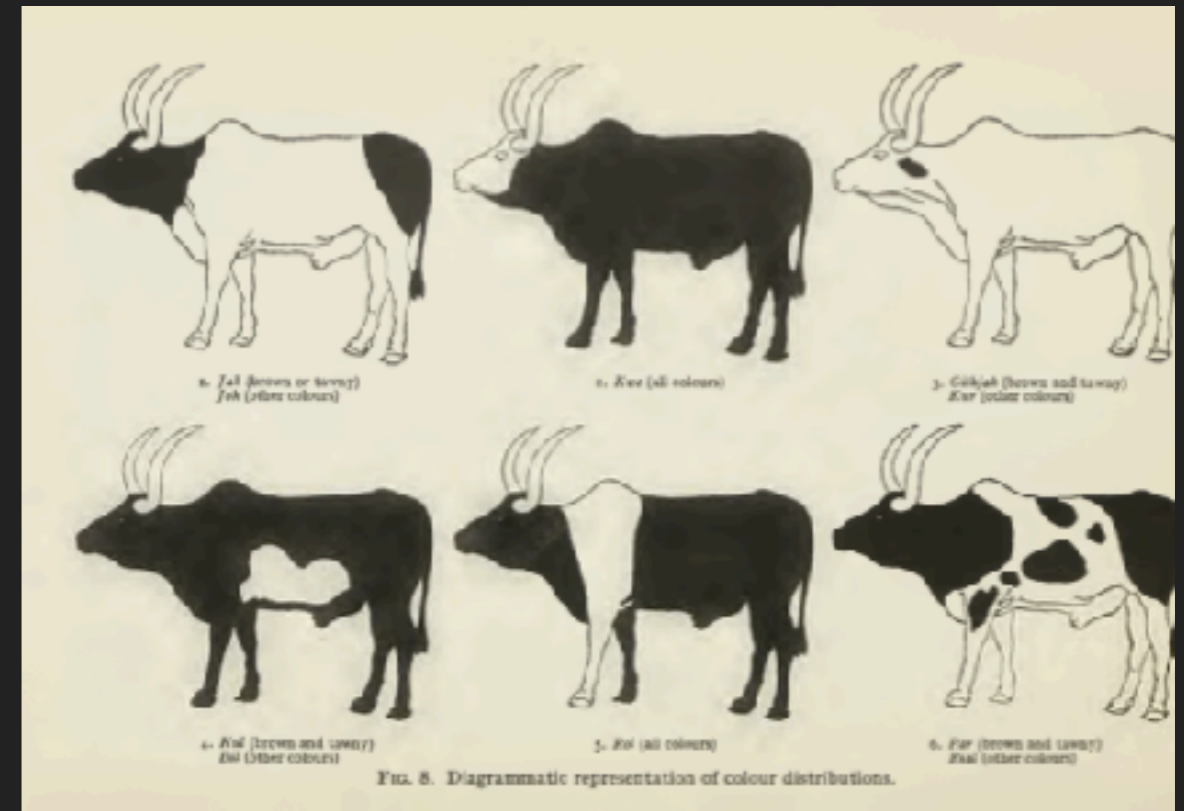


Section of homestead and kraal (Eastern Gaajok)



THE NUER

- ▶ E. E. Evans-Pritchard
- ▶ terms used relating to cows and bulls.
- ▶ names of bull horns
- ▶ ox-names: names of people after the characteristics of ox



METAPHOR OF PEOPLE IN AMERICAN ENGLISH

- ▶ She's a "cupcake."
- ▶ She's a "tart."
- ▶ He's just a "creampuff."
- ▶ I'm in a "pickle."
- ▶ It's a piece of "cake."

LOKONO COLOR TERMS

- ▶ koreto red, pink, wine, rust, brown, yellow
- ▶ subuleto yellow, bright yellows, blue, pink, orange, green
- ▶ imoroto medium to dark green
- ▶ bluto dull (หมอง), dark blue or indigo (denim blue)
- ▶ bunaroto brown, purple, deep yellow-orange, buff (แทน?), gray
- ▶ karimeto black, dark brown, dark blue
- ▶ harirato white, pale yellow, buff, light gray

LANGUAGE USES

BRONISLAW MALINOWSKI (1884–1942)

- ▶ Polish anthropologist worked in the UK.
- ▶ A founder of participant observation method in anthropology.
- ▶ the native's point of view



LANGUAGE AND SOCIAL PRACTICES

- ▶ “The Problem of Meaning in Primitive Languages” (1923)
- ▶ living language in situation and context of situation.
- ▶ living language and dead language
- ▶ Language is not the representation of thought. Language is a mode of action.
- ▶ pragmatic efficiency

<i>tawoulo</i>	<i>ovanu ;</i>	<i>tasivila</i>	<i>tagine</i>
we paddle	in place ;	we turn	we see
<i>soda ;</i>		<i>isakaulo</i>	<i>ka'u'uya</i>
companion ours ;		he runs	rear-wood
<i>oluvieki</i>	<i>simlaveta</i>	<i>Pilolu</i>	
behind	their sea-arm	<i>Pilolu</i>	

LANGUAGE IS ACTION

- ▶ John L. Austin
- ▶ ordinary language:
 - ▶ assertions or declarative sentences:
 - ▶ All men are mortal
 - ▶ The snow is white
 - ▶ The king of France is bald (หัวล้าน)
 - ▶ other kinds of language actions:
performatives, declaratives, contracts,
etc.



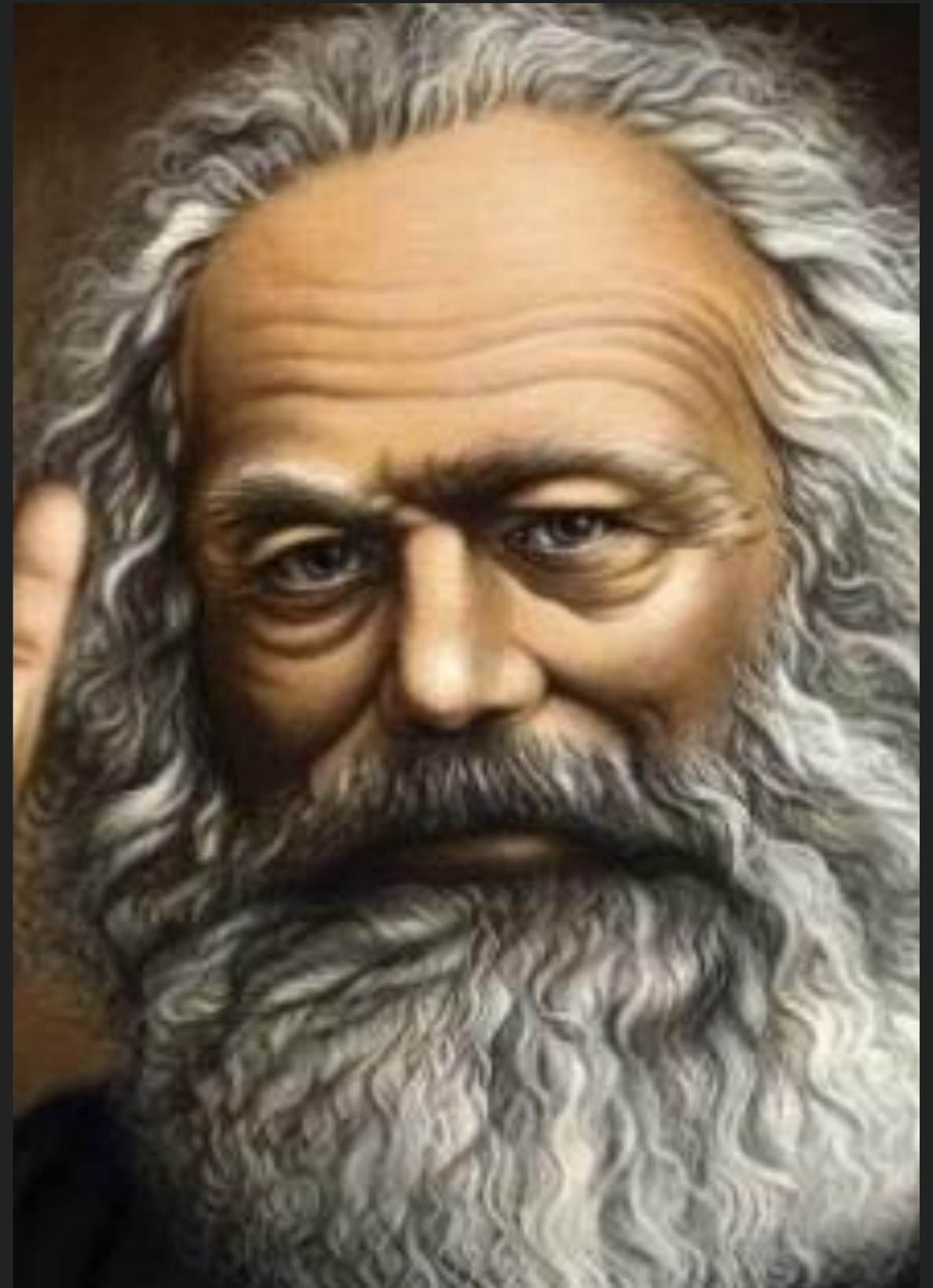
	locutionary	illocutionary	perlocutionary
unit of analysis	grammar and lexicon	power of articulation	its effect, activity or just verbal
origin	meaning	speaker's intention	impact
context	-	context of speaking	the action result of the speaking

- ❖ 1. Hi there, Mr. Jones!
- ❖ Hello, Tommy. How are you?
- ❖ Fine, thanks.
- ❖ 2. How's it going, Sam?
- ❖ Not bad. How's it with you, Mike?
- ❖ Could be worse.
- ❖ 3. Good morning, Jenkins.
- ❖ Good morning, sir.
- ❖ 4. Hello, Louise.
- ❖ Oh. Hi.
- ❖ 5. Mary? How are you? You look wonderful.
- ❖ Nancy! It's so good to see you.
- ❖ 6. Bill.
- ❖ Dick.
- ❖ 7. Morning, Dr. Brown. Pretty day, isn't it?
- ❖ Oh, hello, Susan, Yes, it's nice--going to be a scorcher, though.
- ❖ 8. Good evening, Senator.
- ❖ Hello there. Nice to see you.

LANGUAGE AND POWER

KARL MARX (1818-1883)

- ▶ "Language is as old as consciousness,
- ▶ language is practical, real consciousness that exists for other men as well, and only therefore does it also exist for me;
- ▶ language, like consciousness, only arises from the need, the necessity, of intercourse with other men.



VALENTIN VOLOSHINOV (1895–1936)

- ▶ Marxism and the Philosophy of Language. (1973 [1933]).
- ▶ Ideology relates to power and politics.
- ▶ Ideology is a part of consciousness that is conveyed through language.
- ▶ Language (sign) is always part of power and politics.
- ▶ Language reflects and refracts meaning.
- ▶ Language can be used for domination and resistance.

