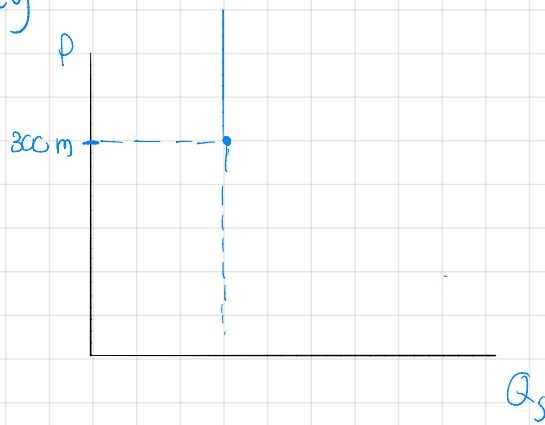
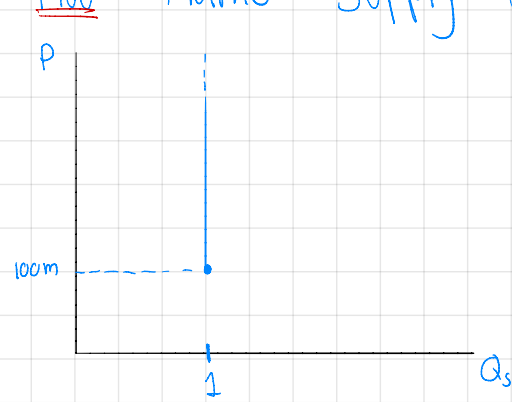
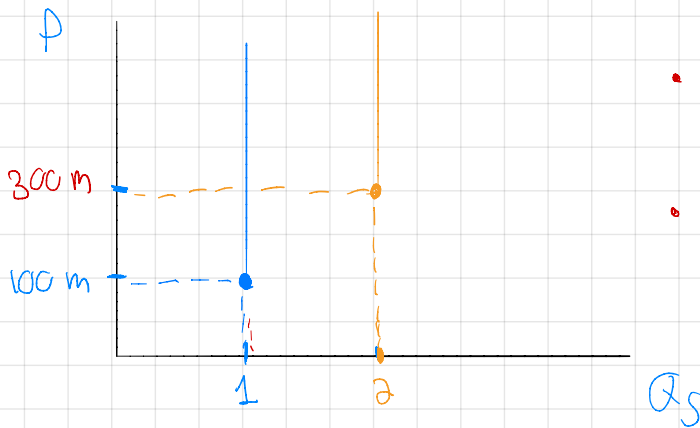


## HW Market Supply for kidney



ANS



• At price lower than 100 m  
 $Q_s = 0$ :

• At price  $\geq 100$  but less than 300  $Q_s = 1$  because person who wants to sell kidney less than 100 but more than 100 has just one

• At price  $\geq 300$   $Q_s = 2$  because people who want to sell kidney  $\geq 300$  have 2

## HW How D+S increase in Extreme Cases

ANS Demand will increase if price is lower or the kidney is limited. Supply will increase if price is higher or they be able to sell more than one kidney.

~~\*~~