

# MATERNAL SOCIO - ECONOMIC STATUS AND THE WELL-BEING OF THE NEXT GENERATION(S)



## MEMBERS

DHANAWICH CHONGSAKUL	6304640250
NICHANAN BOONMEE	6304640813
SPAN PARUHATSANON	6304641365
WARISSARIN JANTRON	6304641803
WISARUD SUWANKHAJIT	6304641860

# ABSTRACT



“

The socioeconomic status (SES) of women may be improved, and this has been demonstrated in a wealth of economic and social scientific research. Drawing from both theoretical and empirical economics research, this chapter suggests many avenues for this impact. The chapter also discusses emerging evidence that shocks to maternal well-being can affect not only a woman's own children

”

# INTRODUCTION

“

For the last few decades women literacy and education attainment have increased, labor market opportunities have expanded. These changes are likely to have benefits that extend beyond the current generation of women.

”



In this chapter will be about how women's SES affects the well-being of their children by identifying several channels for this effect both theoretical and empirical work in economics.

# POTENTIAL CHANNELS



“understanding the  
process of child  
development”

goods parents time

Child's endowment



“

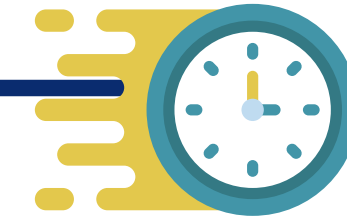
improved women's well-being might translate to improved outcome for children is through an increase in resources that are critical to child development

”

# QUANTITY OF INPUTS



parents who have a college education spend about \$1700 more each year per child than families whose parents did not have a high school degree



college degree mother spend about 4.5 hours more on child care than high school degree mother

---

More educated mother tend to have more time to spend on productive activities that promote child development

---



# QUALITY OF INPUTS

Improved maternal SES might also improve child outcomes if the quality of inputs increases.



“

highly-educated mothers are more likely to spend time on developmentally appropriate activities with children of different ages So we can say that higher-SES parents may make better use of an additional hour spent with their children

”





# ENVIRONMENT

Disadvantaged women and their children are more likely to experience poor environments, sometimes present even before children are born



domestic violence during pregnancy leads to a decrease in birth weight of 163 grams on average, and that “higher levels of violence observed among poor women.

differences in exposure to environmental pollution as a source of socio-economic inequality in birth outcomes.

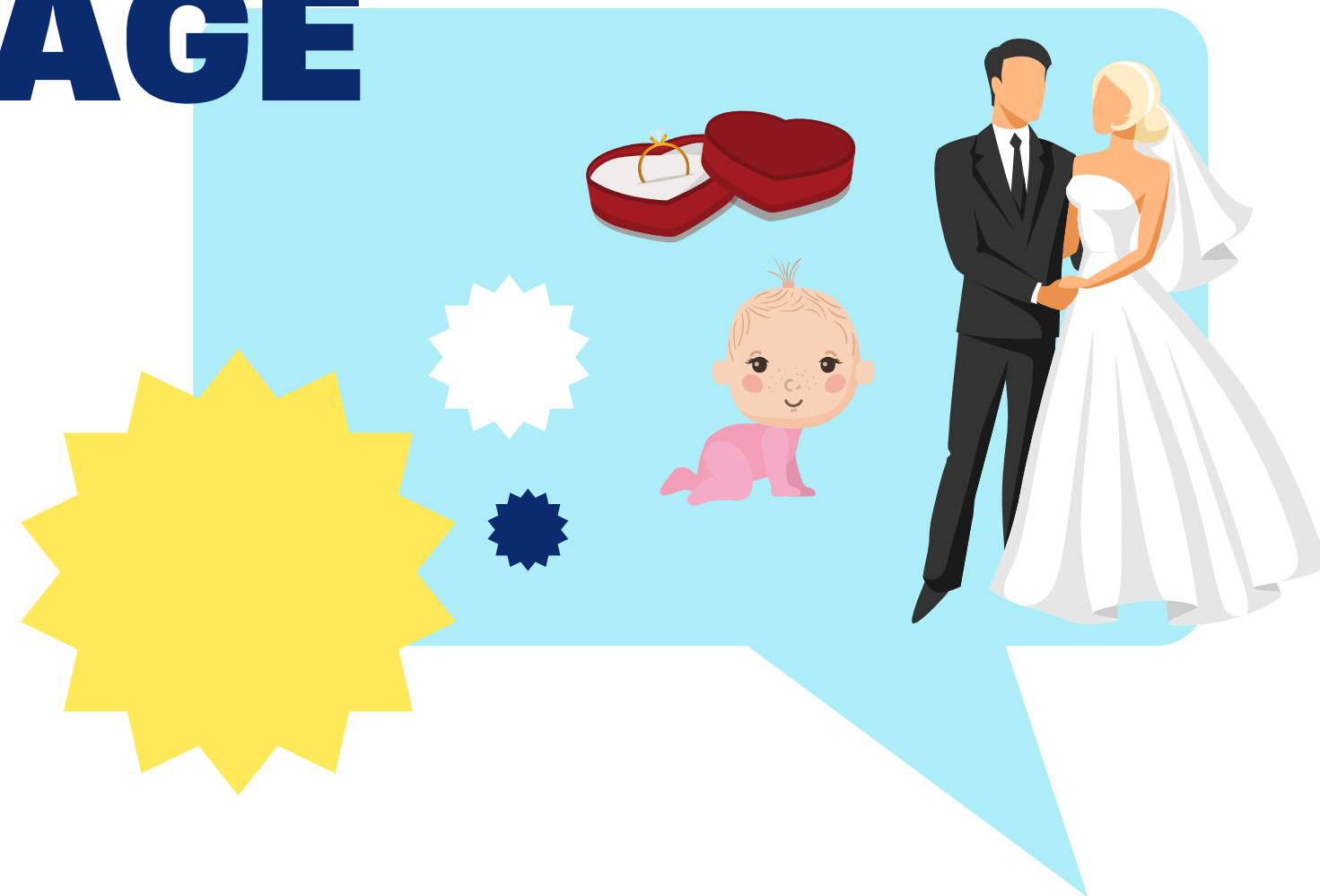
# MARRIAGE

“

highly-educated women are more likely to form marriages or long-term partnerships, and are less likely to divorce

the fraction of marriages that last at least twenty years is twice as high among women with a college degree as it is among women who did not graduate high school (0.78 vs. 0.39).

”



If marriage is good for children, these differences provide an additional channel by which high maternal SES can translate into better outcomes for children.

Marriage might also come with social expectations and obligations that serve to benefit children

# EMPIRICAL EVIDENCE ON THE EFFECTS OF MATERNAL SES

discuss empirical work on the effects of mothers' SES on outcomes directly, including birth outcomes, health, educational attainment, and labor market success.

01

## maternal SES and child outcomes

First, work on the relationship between maternal SES and child outcomes requires data sets

02

## endogenous to child outcomes.

Second, maternal SES is almost certainly endogenous to child outcomes.



# EMPIRICAL WORK ON THE EFFECTS OF MOTHERS' SES



01

## BIRTH OUTCOMES

It has determined that health at birth is a strong predictor of later life outcomes, including

- \***educational attainment,**
- \***success in the labor market,**
- \***health over the life-cycle.**

03

## EDUCATION AND COGNITIVE ABILITY

- \*less successful in school
- \*education is transmitted to children

02

## HEALTH IN CHILDHOOD AND BEYOND

- \*born to low-SES
- \*asthma, obesity, injury, mental health, and developmental delays.
- \*decreases hospitalizations

04

## LABOR MARKET OUTCOMES AND POVERTY

- \*two key determinants of human capital
- \*Bjorklund et al. (2006)
- \*Sacerdote (2007)
- \*Lingo (2015)

# Evidence on Future Generation



## SUMMARY

### INFORMATION

if improvements in maternal SES (as measured by educational attainment or income) improve the health, educational attainment, and labor market success of her children, then we would also expect to see benefits for her children's children.

The health of the adopted child's biological parents (as measured by mortality) is highly predictive of health at birth for the adoptee's own children. However, for the adoptive parents, it is greater educational attainment that leads to higher birth weights for their daughter's children.



# AVENUES FOR FUTURE WORK

This section studies the relationship between maternal SES and child-well being about how they work together with various channels of SES transmission to the next generation covering both within and across countries



## Gene-Environment Interactions

Biological and adoptive parents' SES are determinants of child outcomes



## Changing Family Structure

How does falling in family size affect mothers and their children



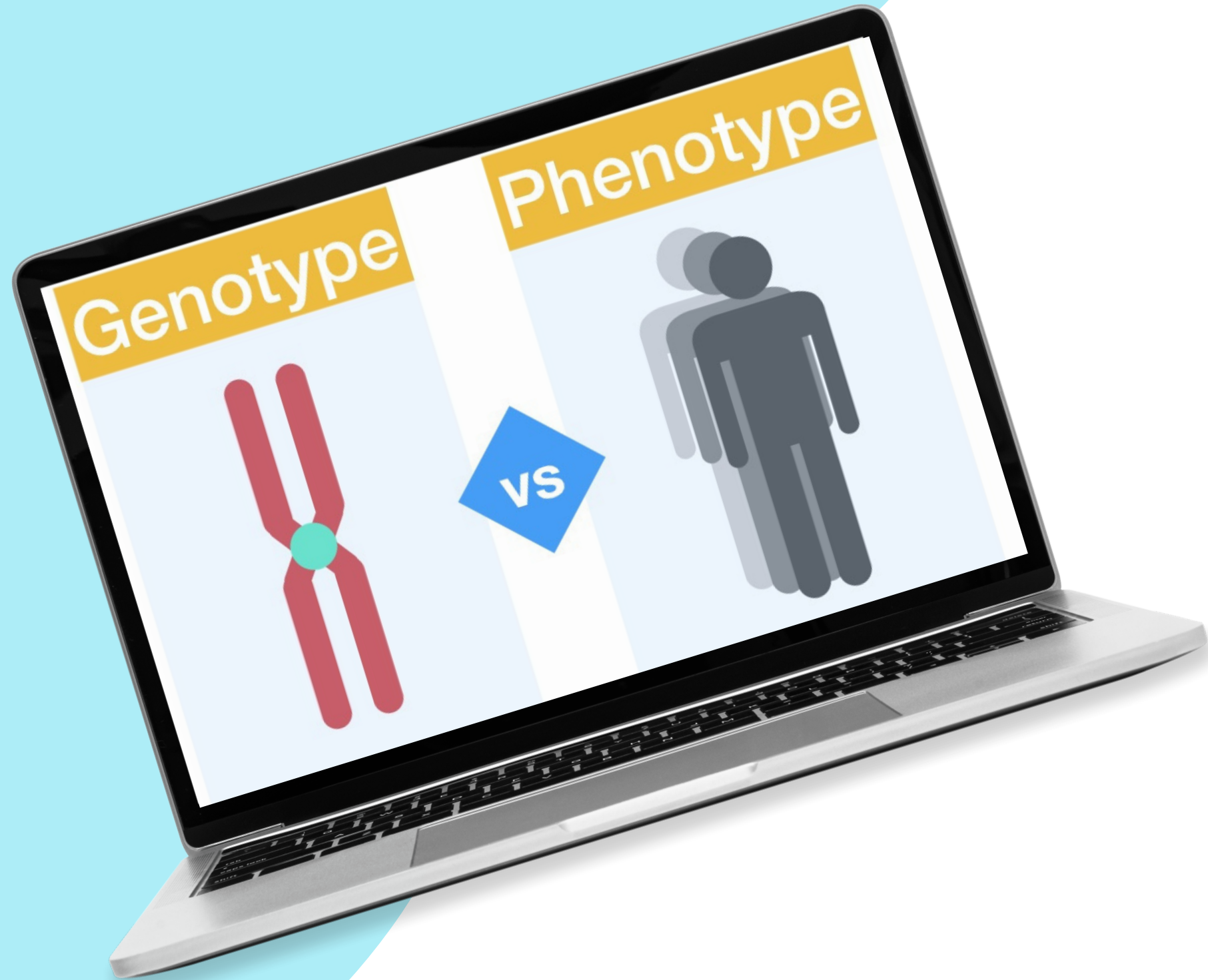
## The role of Public Policy

Public programs and education subsidies get involved to offer the parents and children



## Double Disadvantages

Support the evidence with poor mother and environment affecting them



# “**SCIENTIFIC TERMS**”

**Genotype** = Expression of characteristic or trait



**Phenotype** = Genetic code is the genetic code coming from the biological parents



**Epigenetics** = Interaction terms which determines how genes are expressed



# “ GENE-ENVIRONMENT INTERACTIONS ”

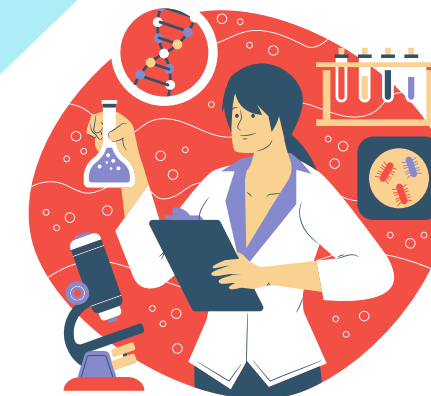
Both biological and adoptive parents' SES determined child outcomes



**GENETICIST**

Phenotype = Genotype + Environment + Epigenetics

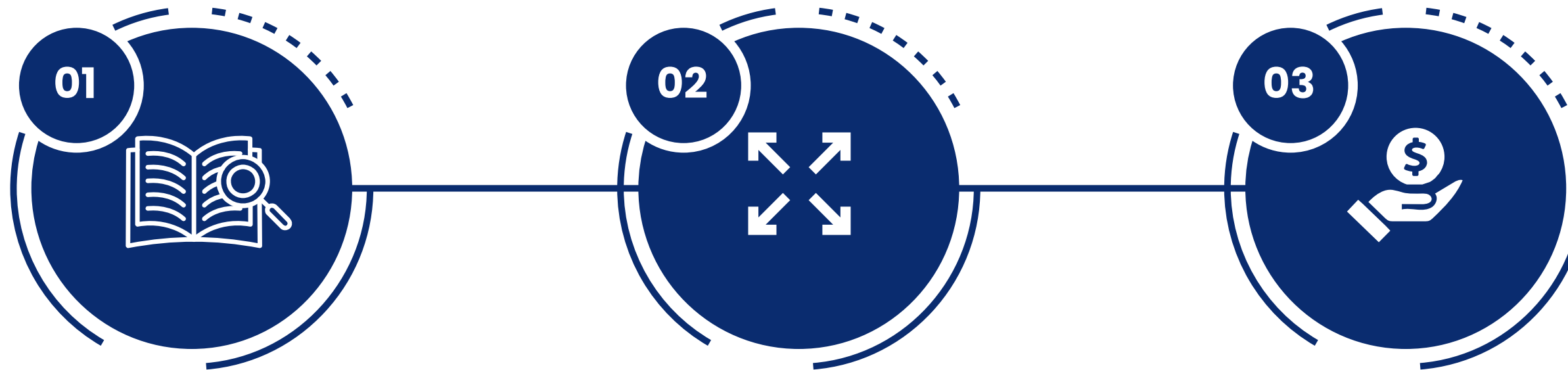
- Relied on adoption or twin studies for the factors and interaction to produce traits.
- Able to have a large number of data sets because the costs have fallen



**SOCIAL SCIENTIST**

increases in birth weight have a significant effect on children's IQ when they have a specific gene variant

# CHANGING FAMILY STRUCTURE



## EXAMPLES

- Marry and have children later
- Children are born to unmarried parents
- Decreasing in family size

## FAMILY SIZE

- The children with limited resources benefit from smaller families
- An increasing in nonmarital in childbearing is stronger among low SES groups

## GROWTH IN EARNINGS GAPS

An increasing in nonmarital in childbearing provided fewer resources



# THE ROLE OF PUBLIC POLICY



01

Economic theory predicts that welfare, free subsidized education, and being should be increased to reduce the intergenerational transmission of SES

02

The transmission of program participation is small and mostly driven by the transmission of poverty status

## DOUBLE DISADVANTAGE

The evidence of a double disadvantage for a child that born with adverse health conditions in low-SES families.

Being born to a poor mother tend to exacerbate over time from the initial health disadvantages because of different resources, environment and investment

# CONCLUSION



“

There is a wealth of evidence in economics and the social sciences that suggests raising women's SES may also raise their children's wellbeing. Using theoretical work in economics that has modeled how different inputs interact to produce child quality and empirical work that has found correlations between maternal SES  
As a result, efforts to improve women's socio-economic well-being may yield benefits for generations to come.

”